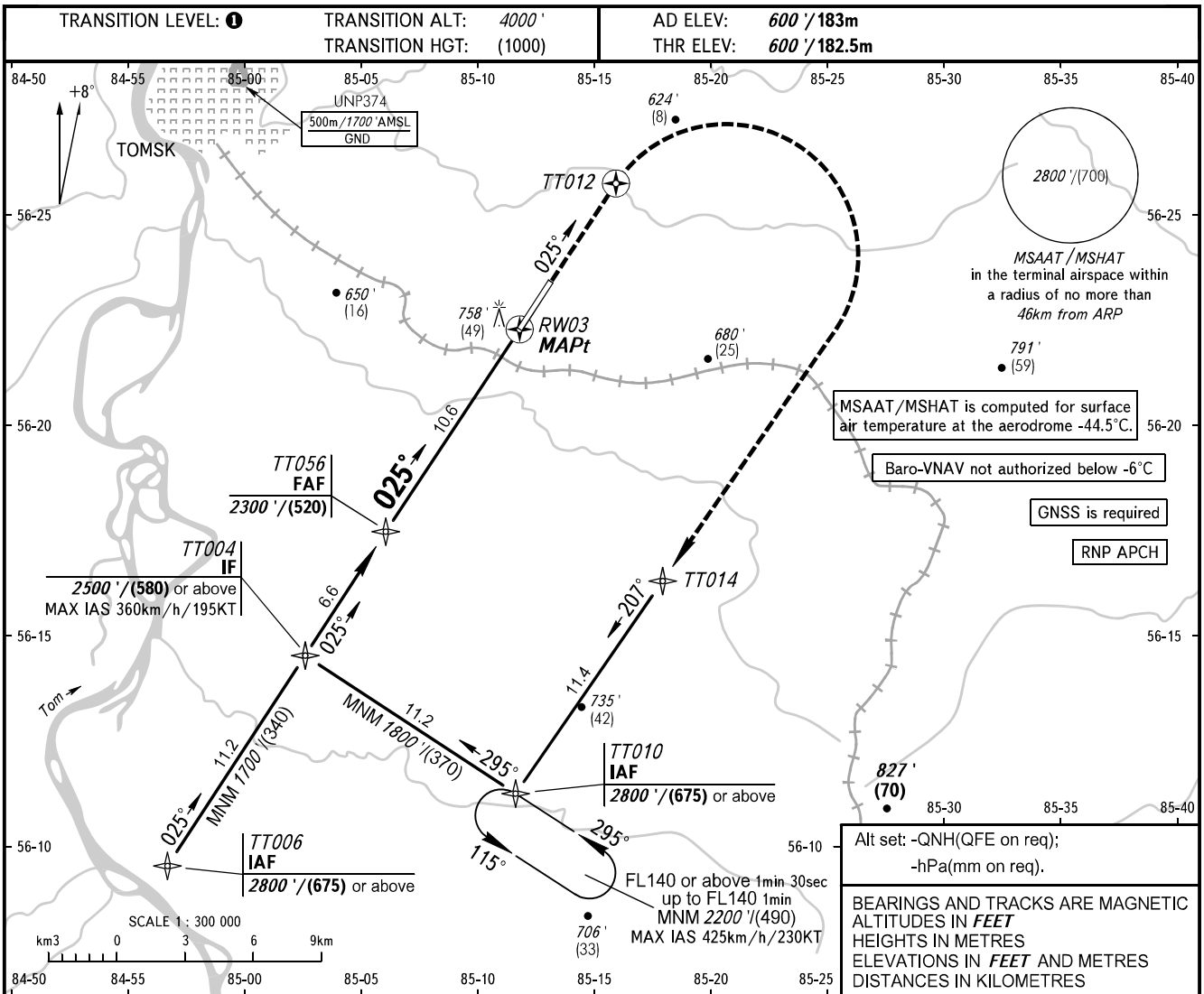


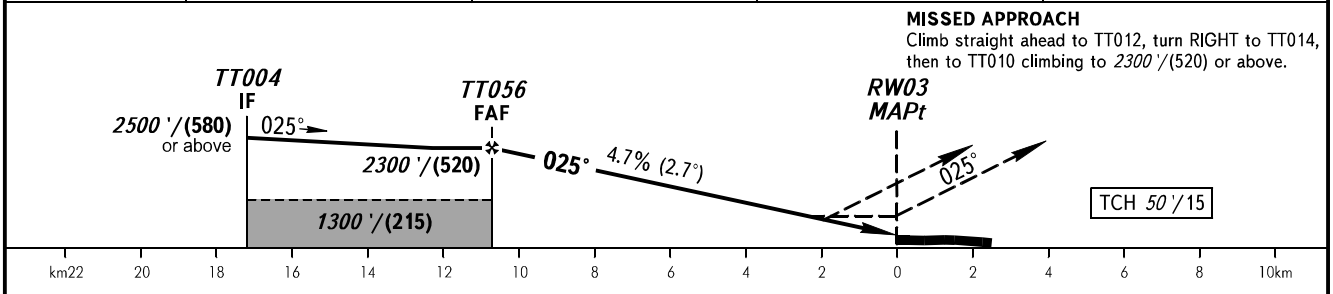
**INSTRUMENT
APPROACH
CHART - ICAO**

TOWER	127.300
-------	---------

**TOMSK, RUSSIA
BOGASHEVO
RNP RWY 03**



DIST to RW03	10.0	8.0	6.0	4.0
ALTITUDE/HEIGHT	2200' / (490)	1890' / (395)	1580' / (300)	1270' / (205)



OCA(H)		A	B	C	D	1 TRANSITION LEVEL: - FL050 when QNH is 1013 hPa (760mm mercury column) or above; - FL060 when QNH is 977 hPa (733mm mercury column) or above, but less than 1013 hPa (760mm mercury column); - FL070 when QNH is less than 977 hPa (733mm mercury column). WARNING MAPt at RW03. Timing not authorized for defining MAPt.				
Straight-in	LNAV	1010' (410') (125)	1010' (410') (125)	1010' (410') (125)	1010' (410') (125)					
	LNAV/VNAV	890' (290') (90)	900' (300') (95)	910' (310') (95)	920' (320') (100)					
Circling		1070' (470') (145)	1100' (500') (155)	1250' (650') (200)	1360' (760') (235)					
GROUND SPEED	km/h	150	180	210	240	270	300	330	360	390
	kt	81	97	113	130	146	162	178	194	211
RATE OF DESCENT	m/s	1.9	2.3	2.7	3.1	3.5	3.9	4.3	4.7	5.0
	ft/min	374	453	532	610	689	768	847	925	984

CHANGE: New chart