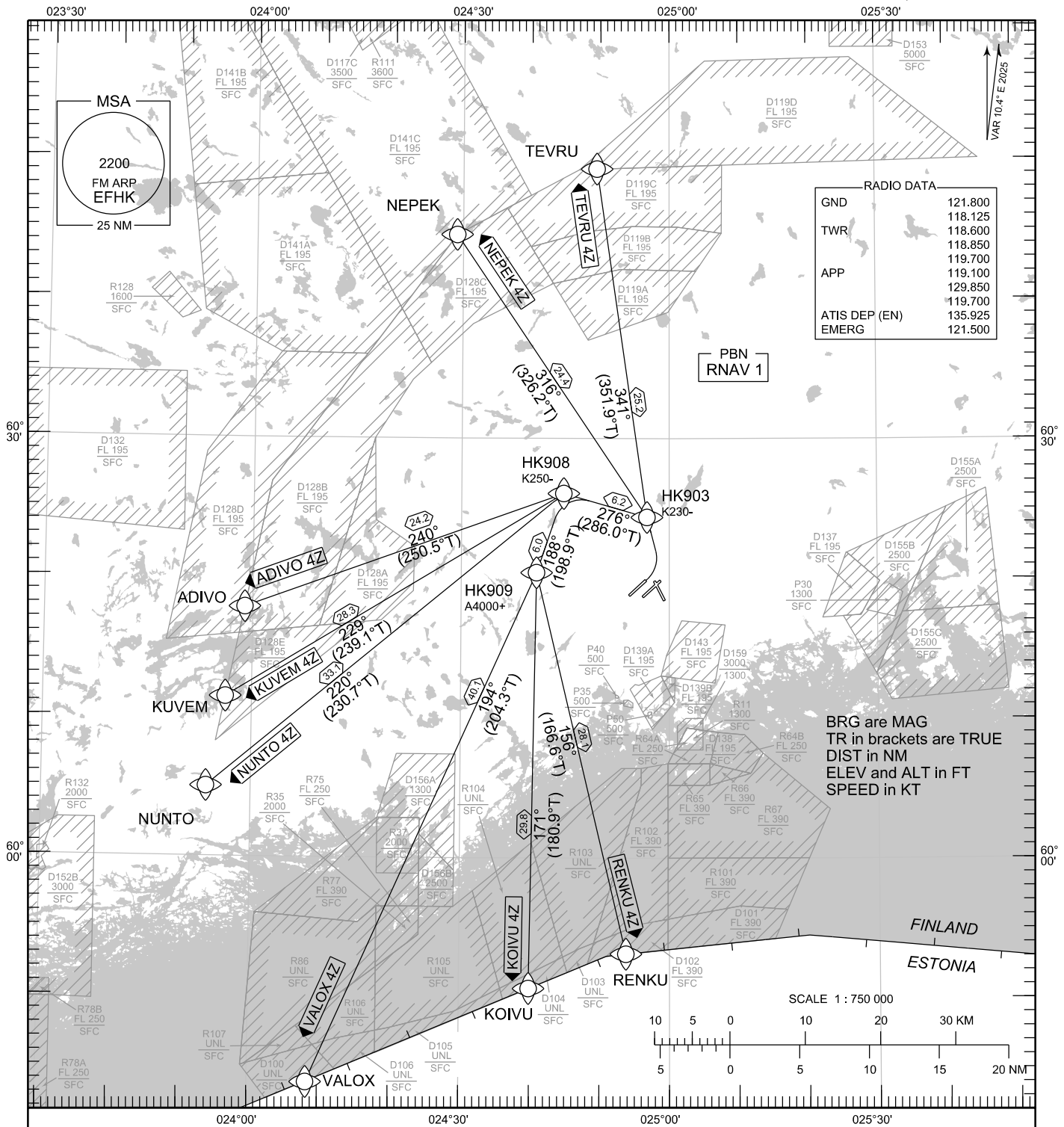


STANDARD DEPARTURE CHART  
INSTRUMENT (SID) - ICAO

TRANSITION ALT  
5000

RNAV (GNSS) SID RWY 04L  
HELSINKI-VANTAA AERODROME  
HELSINKI, FINLAND

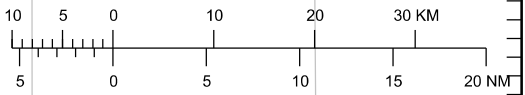


RADIO DATA

GND	121.800
TWR	118.125
APP	118.600
APP	118.850
APP	119.700
APP	119.100
APP	129.850
APP	119.700
ATIS DEP (EN)	135.925
EMERG	121.500

BRG are MAG  
TR in brackets are TRUE  
DIST in NM  
ELEV and ALT in FT  
SPEED in KT

SCALE 1 : 750 000



RNAV SID RWY 04L

ADIVO 4Z KOIVU 4Z KUVEM 4Z NEPEK 4Z NUNTO 4Z RENKU 4Z TEVRU 4Z VALOX 4Z

DME/DME OPS:	NOT SUPPORTED	CLIMB ALTITUDE:	CLIMB TO 4000 FT OR ASSIGNED ALTITUDE IF LOWER. CLIMB TO A HIGHER LEVEL ONLY WHEN CLEARED BY ATC.
ROUTES:	RNAV PROC CODING ON THE VERSO OF THE CHART	RADIO CONTACT:	MAINTAIN TWR FREQ UNTIL 1500 FT, THEN CONTACT HELSINKI RADAR FREQ 129.850.
SQUAWK:	WHEN LINING UP SQUAWK THE ASSIGNED CODE	NOISE ABATEMENT:	AFTER TAKE-OFF CLIMB AS RAPIDLY AS PRACTICABLE TO AT LEAST 2000 FT ABOVE AD ELEV.
ADDITIONS TO SID:	INSTRUCTIONS CONTAINING DEVIATIONS FROM THE SID (TEMPORARY ALTITUDE RESTRICTIONS ETC) MAY BE INCLUDED IN THE ATC CLEARANCE PRIOR TO TAKE-OFF.	AREA MNM ALT:	SEE AMA INDEX, AIP ENR 6.1 - 3
INITIAL CLIMB:	MNM TURNING ALTITUDE ACCORDING TO RTE CODING. PDG 5.0 % (304 FT/NM) UNTIL 4000 FT BASED ON AIRSPACE RESTRICTIONS.		

CHG: radio data

EFHK RNAV SID RWY 04L										
RTE NAV SPEC	SEQ NR	P/T	WPT		MAG	GEO TR	DIST NM	Turn Direction	Constraints	
			ID	Flyover					LVL	Speed
ADIVO 4Z RNAV 1	010	CA	-	-	037°	047.4°T	-	L	A680+	
	020	DF	HK903	-	-	-	-			K230-
	030	TF	HK908	-	276°	286.0°T	6.2	L		K250-
	040	TF	ADIVO	-	240°	250.5°T	24.2			
KOIVU 4Z RNAV 1	010	CA	-	-	037°	047.4°T	-	L	A680+	
	020	DF	HK903	-	-	-	-			K230-
	030	TF	HK908	-	276°	286.0°T	6.2	L		K250-
	040	TF	HK909	-	188°	198.9°T	6.0		A4000+	
	050	TF	KOIVU	-	171°	180.9°T	29.8			
KUVEM 4Z RNAV 1	010	CA	-	-	037°	047.4°T	-	L	A680+	
	020	DF	HK903	-	-	-	-			K230-
	030	TF	HK908	-	276°	286.0°T	6.2	L		K250-
	040	TF	KUVEM	-	229°	239.1°T	28.3			
NEPEK 4Z RNAV 1	010	CA	-	-	037°	047.4°T	-	L	A680+	
	020	DF	HK903	-	-	-	-			K230-
	030	TF	NEPEK	-	316°	326.2°T	24.4			
NUNTO 4Z RNAV 1	010	CA	-	-	037°	047.4°T	-	L	A680+	
	020	DF	HK903	-	-	-	-			K230-
	030	TF	HK908	-	276°	286.0°T	6.2	L		K250-
	040	TF	NUNTO	-	220°	230.7°T	33.1			
RENKU 4Z RNAV 1	010	CA	-	-	037°	047.4°T	-	L	A680+	
	020	DF	HK903	-	-	-	-			K230-
	030	TF	HK908	-	276°	286.0°T	6.2	L		K250-
	040	TF	HK909	-	188°	198.9°T	6.0	L	A4000+	
	050	TF	RENKU	-	156°	166.6°T	28.1			
TEVRU 4Z RNAV 1	010	CA	-	-	037°	047.4°T	-	L	A680+	
	020	DF	HK903	-	-	-	-			K230-
	030	TF	TEVRU	-	341°	351.9°T	25.2			
VALOX 4Z RNAV 1	010	CA	-	-	037°	047.4°T	-	L	A680+	
	020	DF	HK903	-	-	-	-			K230-
	030	TF	HK908	-	276°	286.0°T	6.2	L		K250-
	040	TF	HK909	-	188°	198.9°T	6.0		A4000+	
	050	TF	VALOX	-	194°	204.3°T	40.1			

**WPT COORD**

SEE PAGE EFHK AD 2.15 - 1