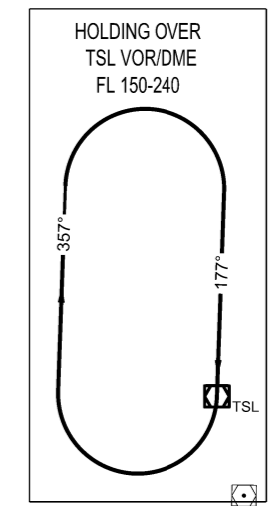
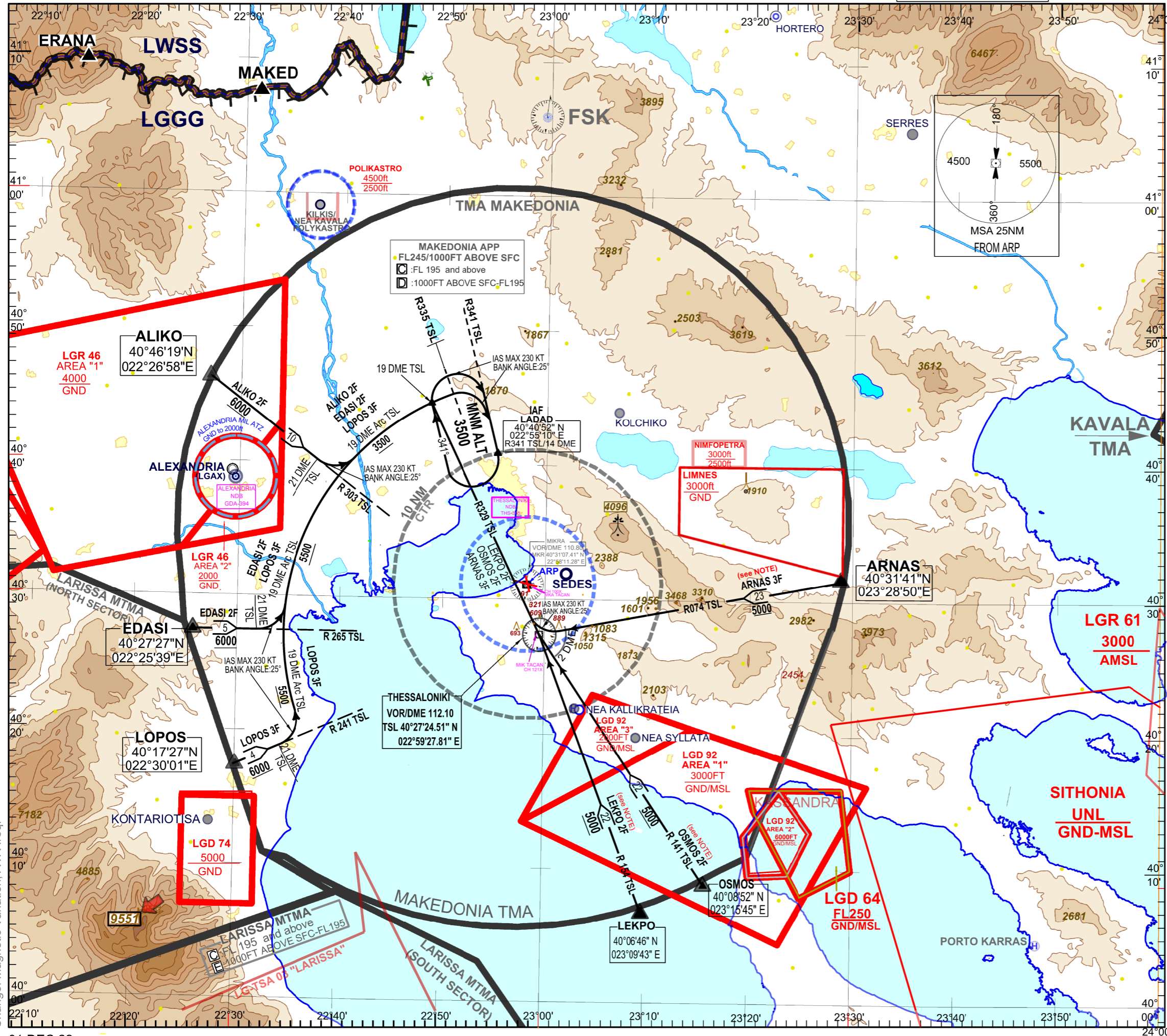


THESSALONIKI / MAKEDONIA  
RWY 16 (BASED ON TSL VOR/DME)  
ARNAS 3F, ALIKO 2F, EDASI 2F,  
LEKPO 2F, LOPOS 3F, OSMOS 2F

TRANSITION ALTITUDE  
6000 ft

AERODROME ELEV 22 ft

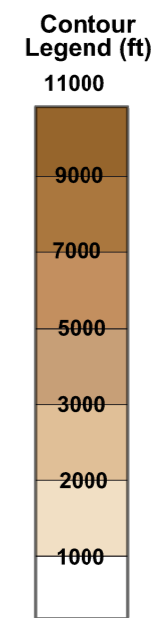
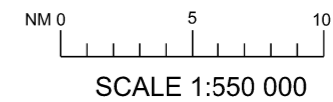
ATIS 127.555 APP 120.800  
TWR 118.105



ELEVATIONS, ALTITUDES  
ARE IN FEET  
BEARINGS, TRACKS AND  
RADIALS ARE MAGNETIC  
DISTANCES ARE IN NM  
VAR 5°E/2022 - Annual Change 5'44"

Length of STAR EDASI 2F (from EDASI to LADAD):37NM.  
Length of STAR LOPOS 3F (from LOPOS to LADAD):43NM.  
Length of STAR ALIKO 2F (from ALIKO to LADAD):29NM.  
Length of STAR ARNAS 3F (from ARNAS to LADAD):53NM.  
Length of STAR OSMOS 2F (from OSMOS to LADAD):52NM.  
Length of STAR LEKPO 2F (from LEKPO to LADAD):52NM.

**NOTE**  
Executing the STARs LEKPO 2F, OSMOS 2F, ARNAS 3F,  
after passing TSL VOR intercept R329 TSL.  
At 19 DME/TSL turn right (Max IAS 230°, Bank Angle 25°)  
and enter the holding pattern.



Change: Magnetic Variation, TWR freq.