

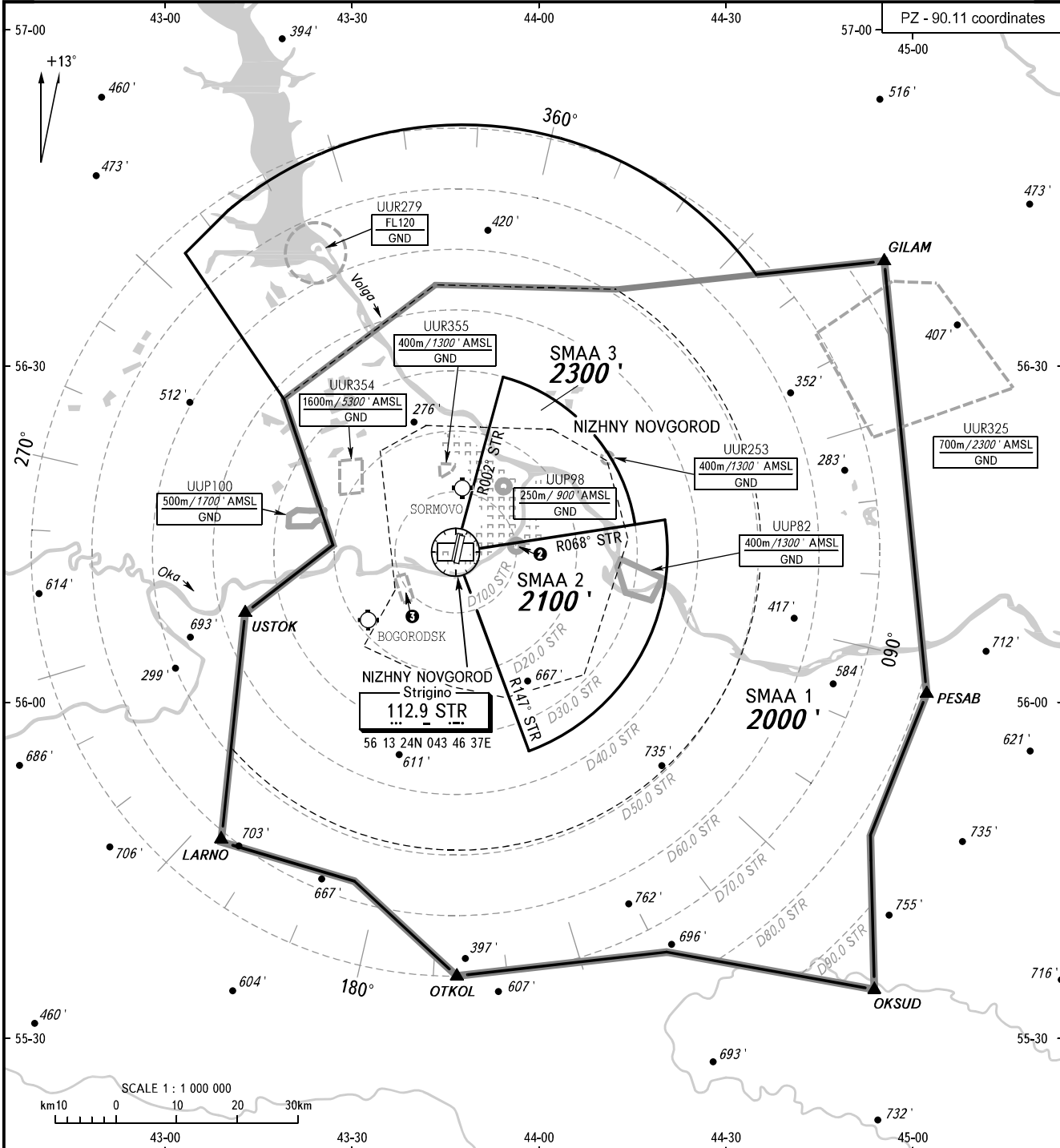
ATC SURVEILLANCE MINIMUM  
ALTITUDE CHART - ICAO

ELEV  
**258 / 79m**

TRANSITION ALTITUDE: **5000'**

NIZHNY NOVGOROD, RUSSIA

STRIGINO



NIZHNY APPROACH **124.700**  
NIZHNY RADAR **120.800**  
NIZHNY TOWER **120.400**

**2** UUP97  
250m / 900' AMSL  
GND

**3** UUR452  
400m / 1300' AMSL  
GND

**WARNING:**

1. The chart may only be used for cross-checking of altitudes assigned while the aircraft is under radar control.
2. When vectoring is carried out under low-temperature conditions, minimum vectoring altitudes for IFR flight must be corrected by altimeter temperature correction.

COMMUNICATION FAILURE: In accordance with the procedures described in AIP.

SMAA coordinates are on the reverse of this page.

BEARINGS AND TRACKS ARE MAGNETIC  
ALTITUDES AND ELEVATIONS IN **FEET**  
DISTANCES IN KILOMETRES

Alt set: -QNH(QFE on req);  
-hPa(mm on req).

CHANGE: New chart

**NIZHNY NOVGOROD, RUSSIA  
STRIGINO**

<b>SURVEILLANCE MINIMUM ALTITUDE AREAS</b>		
IDENT	MNM ALT (ft)	LATERAL LIMITS (PZ-90.11 coordinates)
SMAA 1	2000	553410.0N 0445226.0E - 553743.0N 0441950.0E - 553540.0N 0434650.0E - 554405.0N 0433040.0E - 554743.0N 0430937.0E - 560754.0N 0431305.0E - 561400.0N 0432700.0E - 562700.0N 0431900.0E - 563953.0N 0430256.0E - then clockwise by arc of a circle radius of 60 KM centred at (561908.0N 0434743.0E) to 563757.5N 0443510.3E - 563900.0N 0445553.0E - 560025.0N 0450129.0E - 554753.9N 0445211.4E - 553410.0N 0445226.0E (excluding SMAA 2 and SMAA 3).
SMAA 2	2100	561323.5N 0434636.7E - 561612.4N 0442007.1E - then clockwise by arc of a circle radius of 35 KM centred at (561323.5N 0434636.7E) to 555541.0N 0435814.9E - 561323.5N 0434636.7E.
SMAA 3	2300	561323.5N 0434636.7E - 562859.6N 0435416.5E - then clockwise by arc of a circle radius of 30 KM centred at (561323.5N 0434636.7E) to 561548.8N 0441519.6E - 561323.5N 0434636.7E.