

STANDARD DEPARTURE CHART - INSTRUMENT

RJAH / HYAKURI

SID

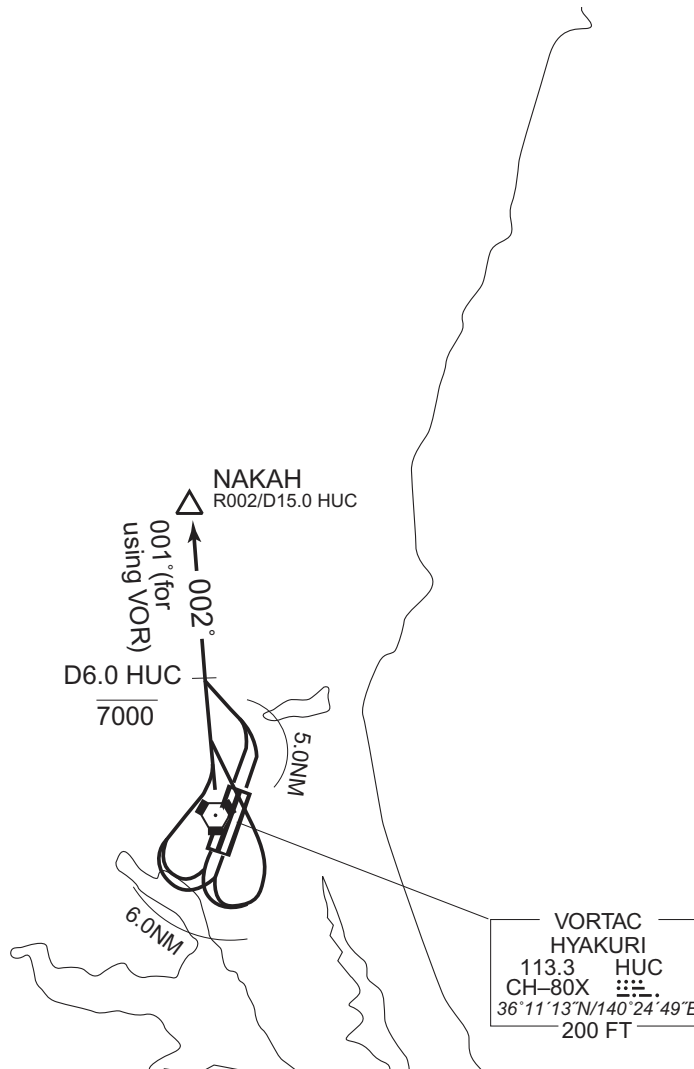
NAKAH FOUR DEPARTURE

RWY 03R/03L : Turn left within 5.0NM....

RWY 21R/21L : Turn right or left within 6.0NM....

....climb via HUC R002(R001 for using VOR) to NAKAH.

Cross HUC R002(R001 for using VOR) /6.0DME at or below 7000FT.



CHANGE : NIKKO TRANSITION abolished. NIKKO NDB(JD) abolished.