

WAAS CH <b>45510</b> <b>W25A</b>	APP CRS <b>247°</b>	Rwy Idg <b>8003</b> TDZE <b>41</b> Apt Elev <b>42</b>
--	------------------------	---

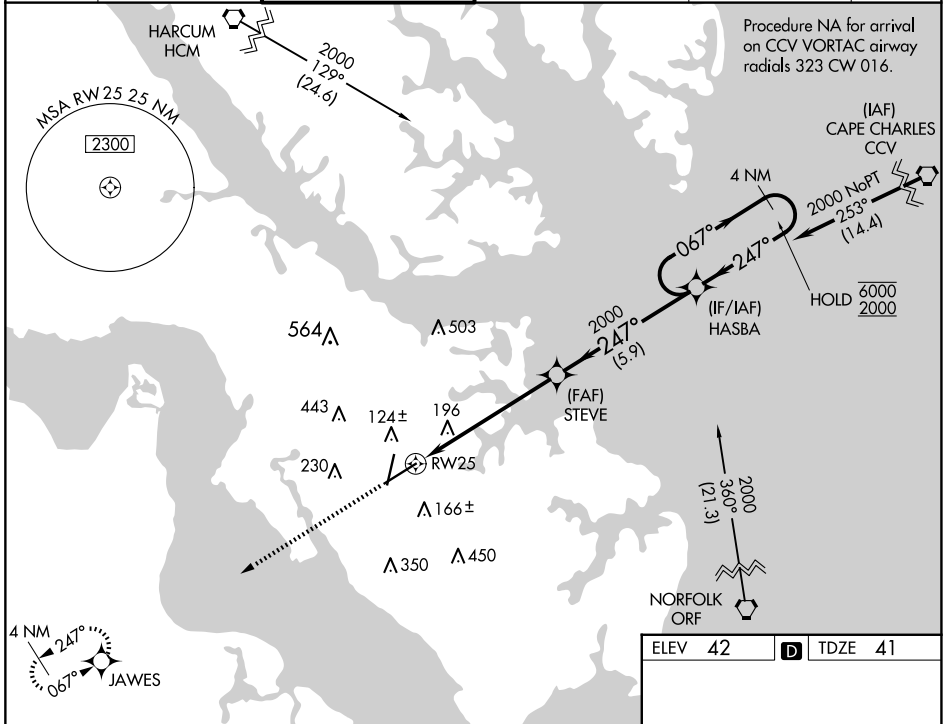
# RNAV (GPS) RWY 25

NEWPORT NEWS/WILLIAMSBURG INTL (PHF)

RNP APCH.  
 For uncompensated Baro-VNAV systems, LNAV/VNAV NA below -11° C or above 54° C.

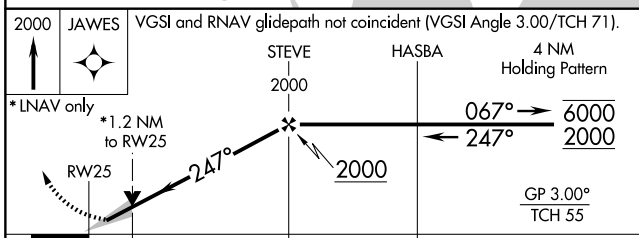
MISSED APPROACH: Climb to 2000 direct JAWES and hold.

ATIS <b>128.65</b>	NORFOLK APP CON <b>125.7</b>	<b>NEWPORT NEWS TOWER*</b> <b>118.7(CTAF) 257.9</b>	GND CON <b>121.9 348.6</b>	CLNC DEL <b>121.65 225.4</b>	UNICOM <b>122.95</b>
-----------------------	---------------------------------	--	-------------------------------	---------------------------------	-------------------------

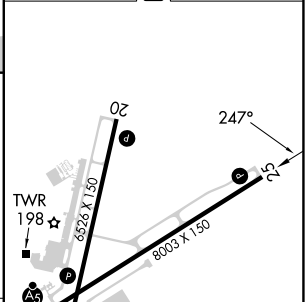


NE-3, 20 MAR 2025 to 17 APR 2025

NE-3, 20 MAR 2025 to 17 APR 2025



ELEV 42	<b>D</b> TDZE 41
---------	------------------



CATEGORY	A	B	C	D
LPV DA		241-3/4	200 (200-3/4)	
LNAV/VNAV DA		516-1 5/8	475 (500-1 5/8)	
LNAV MDA	480-1	439 (500-1)	480-1 1/4	439 (500-1 1/4)
<b>C</b> CIRCLING	520-1 478 (500-1)	540-1 498 (500-1)	760-2 718 (800-2)	780-2 1/4 738 (800-2 1/4)

REIL Rwy 20 and 25   
 HIRL Rwy 2-20 and 7-25