

WAAS CH 99423 W33A	APP CRS 336°	Rwy Idg 5105 TDZE 50 Apt Elev 54
----------------------------------------	------------------------	-------------------------------------------------------------

RNAV (GPS) RWY 33

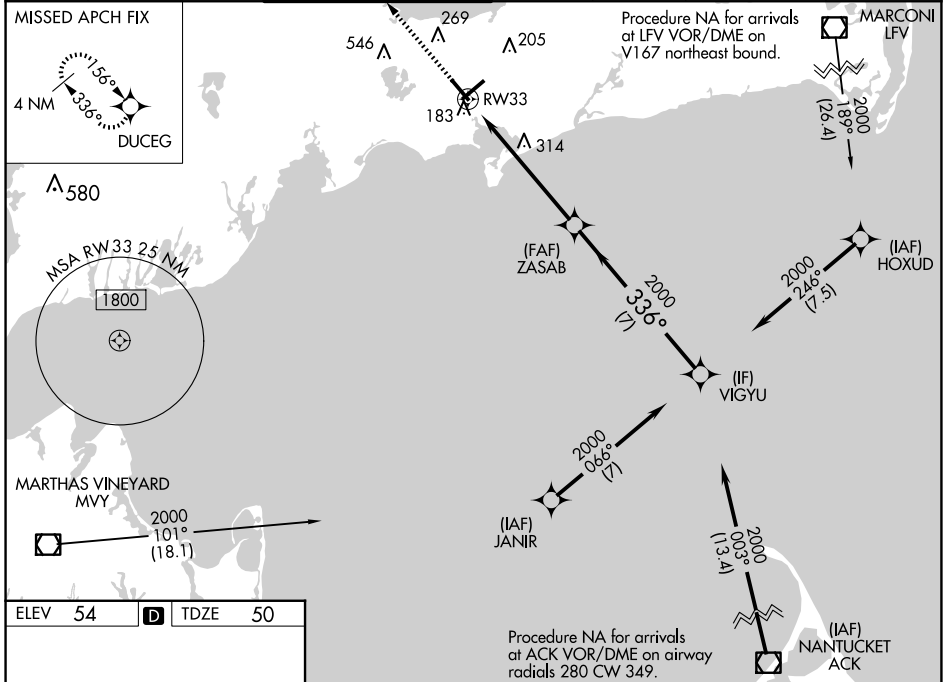
CAPE COD GATEWAY (HYA)

RNP APCH - GPS

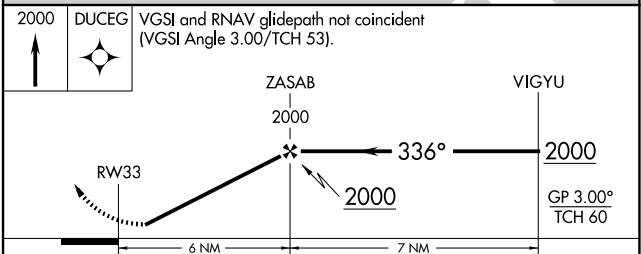
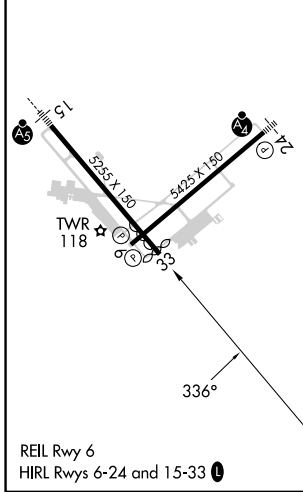
▼ Baro-VNAV NA when using Chatham altimeter setting. For uncompensated Baro-VNAV systems, LNAV/VNAV NA below -15°C or above 43°C. When local altimeter setting not received, use Chatham altimeter setting: increase LPV DA to 332 feet; increase LNAV/VNAV DA to 393 feet; increase all MDAs 40 feet and visibility Cats C and D ¼ SM. Rwy 33 helicopter visibility reduction below ¾ SM NA. Circling Rwy 24 at night, operational VGSI required, remain on or above VGSI glidepath until threshold.

MISSED APPROACH: Climb to 2000 direct DUCEG and hold.

ATIS 123.8	BOSTON APP CON 118.2 284.6	HYANNIS TOWER ★ 119.5 (CTAF) 0 257.8	GND CON 118.45	CLNC CON 125.15	CLNC DEL 120.125 (When twr closed)	UNICOM 122.95
----------------------	--------------------------------------	------------------------------------------------	--------------------------	---------------------------	-------------------------------------------------	-------------------------



ELEV 54	D	TDZE 50
---------	---	---------



CATEGORY	A	B	C	D
LPV DA		300-1	250 (300-1)	
LNAV/VNAV DA		361-1	311 (400-1)	
LNAV MDA	620-1	570 (600-1)	620-1½	570 (600-1½)
CIRCLING	620-1	566 (600-1)	860-2¼ 806 (900-2¼)	860-2½ 806 (900-2½)

NE-1, 20 MAR 2025 to 17 APR 2025

NE-1, 20 MAR 2025 to 17 APR 2025