

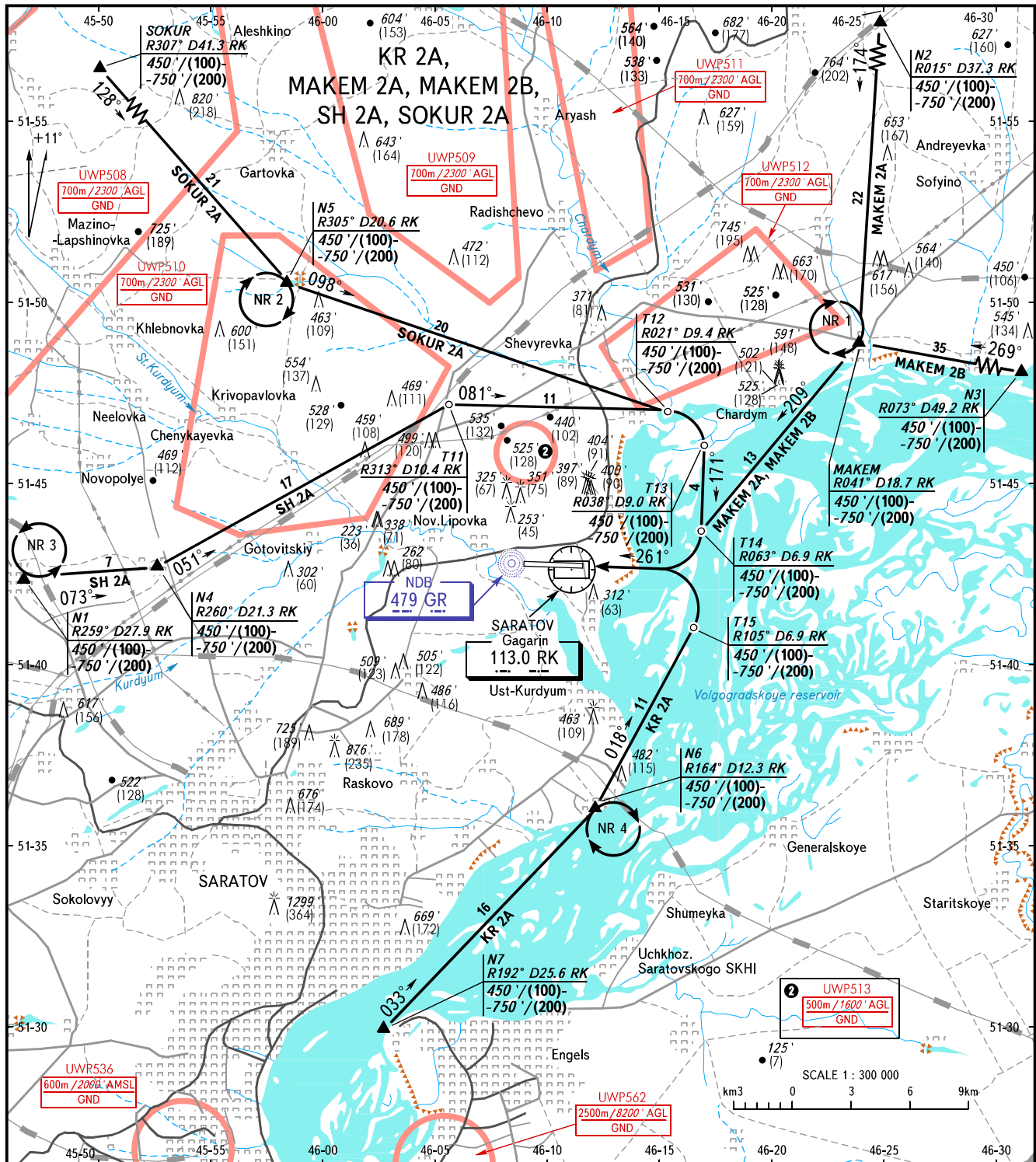
VFR  
ARRIVAL CHART

SARATOV, RUSSIA

GAGARIN

RWY 26

TRANSITION  
LEVEL: 1



GAGARIN APPROACH 121.625  
 GAGARIN RADAR 130.300  
 GAGARIN TOWER 122.850

1 TRANSITION LEVEL:

- FL040 when QNH is 1013 hPa (760mm mercury column) or above;
- FL050 when QNH is 977 hPa (733mm mercury column) or above, but less than 1013 hPa (760mm mercury column);
- FL060 when QNH is less than 977 hPa (733mm mercury column).

- NR 1 Holding altitude for one-way traffic is by ATC instruction, RIGHT turns.
- NR 2 Holding altitude is by ATC instruction, RIGHT turns.
- NR 3 Holding altitude is by ATC instruction, LEFT turns.
- NR 4 Holding altitude is by ATC instruction, RIGHT turns.

WARNING

Altitudes below the transition level shall be assigned by ATS unit and maintained by the flight crew in feet based upon QNH in hectopascals (hPa). QFE value is issued by Radar controller (Gagarin-Radar) on flight crew's request. Flight crews of ACFT not equipped for maintaining the altitude in feet or based upon hPa must have conversion tables which allow to carry out the controller's instruction to maintain altitude.

BEARINGS AND TRACKS ARE MAGNETIC  
 ALTITUDES IN FEET  
 HEIGHTS IN METRES  
 ELEVATIONS IN FEET AND METRES  
 DISTANCES IN KILOMETRES

Alt set: -QNH(QFE on req);  
 -hPa(mm on req).