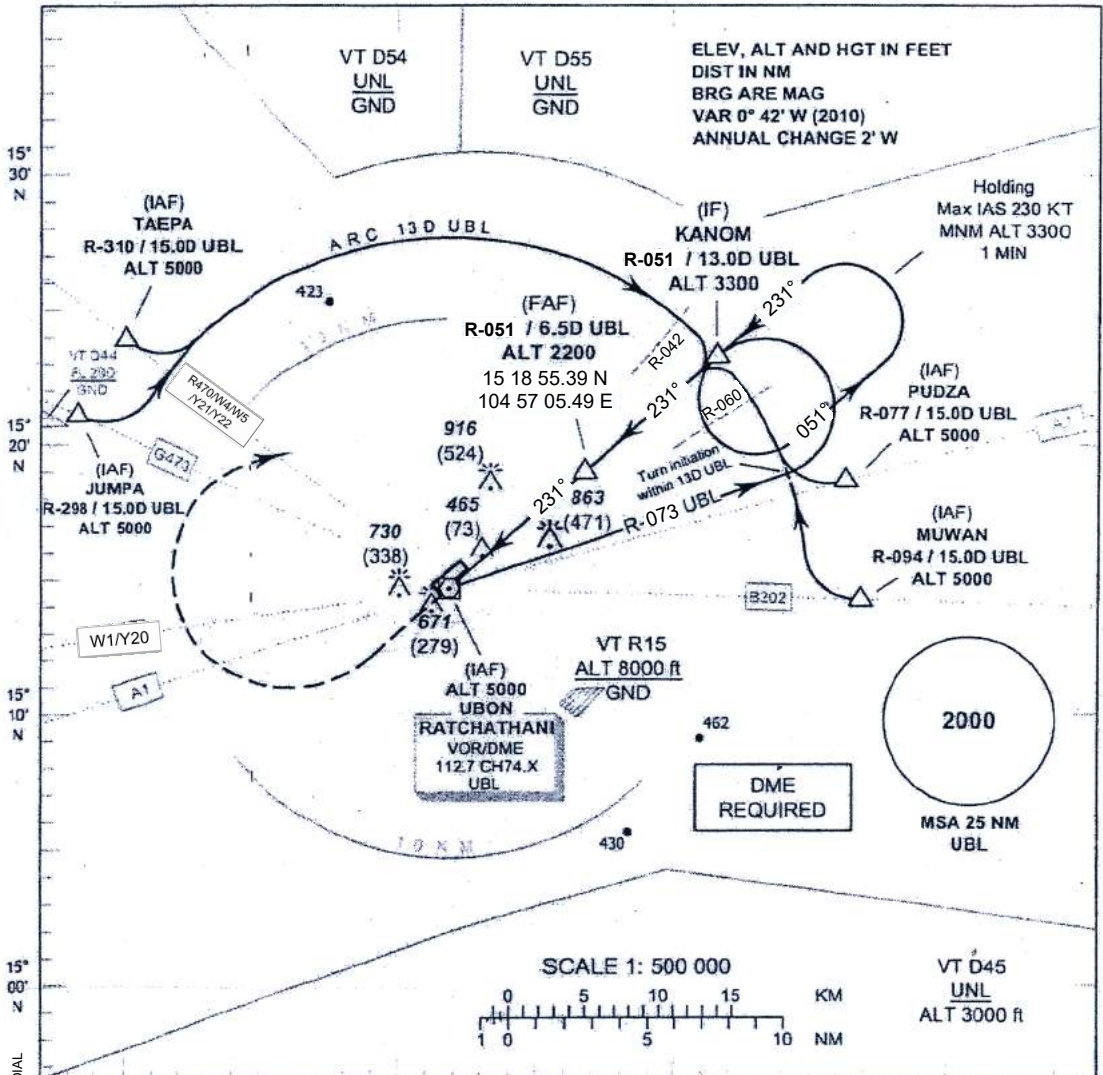


INSTRUMENT APPROACH CHART - ICAO **AIR DROME ELEV 406 FT**
HEIGHTS RELATED TO THR RWY 23 - ELEV 392 FT

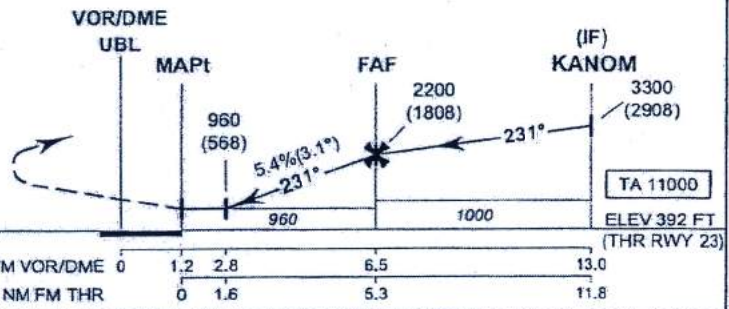
APP : 123.5 , 257.8
 TWR : 119.9 , 274.5
 GND : 121.9 , 275.8

UBON RATCHATHANI / Ubon Ratchathani (VTUU) VOR RWY23



MISSED APPROACH:
 No turn before MAPt.
 Climb straight ahead to 1400 (1008) FT then turn right to intercept R-050 UBL /OR then proceed to IF at 3300 (2908) FT and hold or as directed by ATC.

Descent gradient not coincident with PAPI (3.0°).



| OCA/H | A | B | C | D | Distance (UBL) | 2.8 D | 3 D | 4 D | 5 D | 6 D | FAF | |
|------------------------|--------------------|---|---|---|-------------------|--------------------------|------------|------------|-------------|-------------|-------------|------|
| Straight - in Approach | 960 (568) | | | | Altitude (Height) | 960 (568) | 1030 (638) | 1360 (968) | 1690 (1298) | 2015 (1623) | 2200 (1808) | |
| | | | | | Ground speed (GS) | knot | 100 | 120 | 140 | 160 | 180 | 200 |
| | Circling (OCH AAL) | | | | 1350 (944) | Rate of descent (ft/min) | 545 | 655 | 765 | 875 | 985 | 1095 |

CHANGE : IF RADIAL, FINAL COURSE, BASE TURN OUTBOUND, LEAD RADIAL