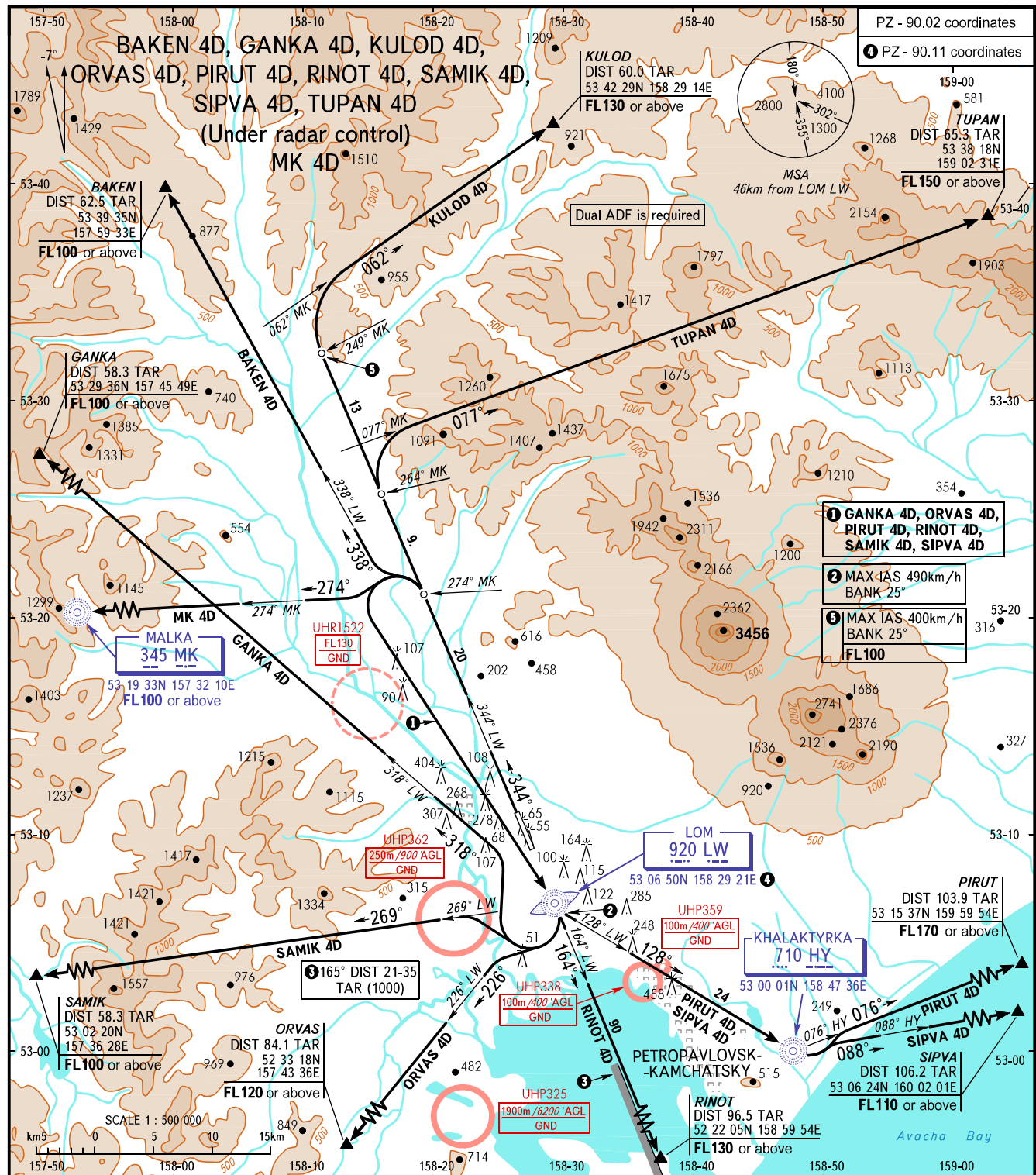


STANDARD DEPARTURE CHART  
INSTRUMENT (SID) - ICAO

PETROPAVLOVSK-KAMCHATSKY, RUSSIA

YELIZOVO  
RWY 34L

TRANSITION  
HEIGHT: (2400)



START RADAR	118.100 119.400	<b>WARNING:</b> 1. MINIMUM CLIMB GRADIENTS (due to obstacles): BAKEN 4D: 5.0% up to (1500); GANKA 4D: 6.2% up to FL090; KULOD 4D: 5.6% up to (2100); MK 4D: 5.0% up to (2000); ORVAS 4D: 6.2% up to FL100; PIRUT 4D, RINOT 4D, SIPVA 4D: 6.2% up to (2000); SAMIK 4D: 6.2% up to (2150); TUPAN 4D: 6.0% up to FL090.	2. MINIMUM CLIMB GRADIENTS (due to airspace structure): BAKEN 4D: 5.0% from (1500) up to FL100; KULOD 4D: 5.6% from (2100) up to FL130; TUPAN 4D: 4.4% from FL090 up to FL150.
BEARINGS AND TRACKS ARE MAGNETIC ALTITUDES AND ELEVATIONS IN METRES DISTANCES IN KILOMETRES		Alt set: -QFE(QNH on req); -mm(hPa on req).	

CHANGE: UHP359, UHP362