

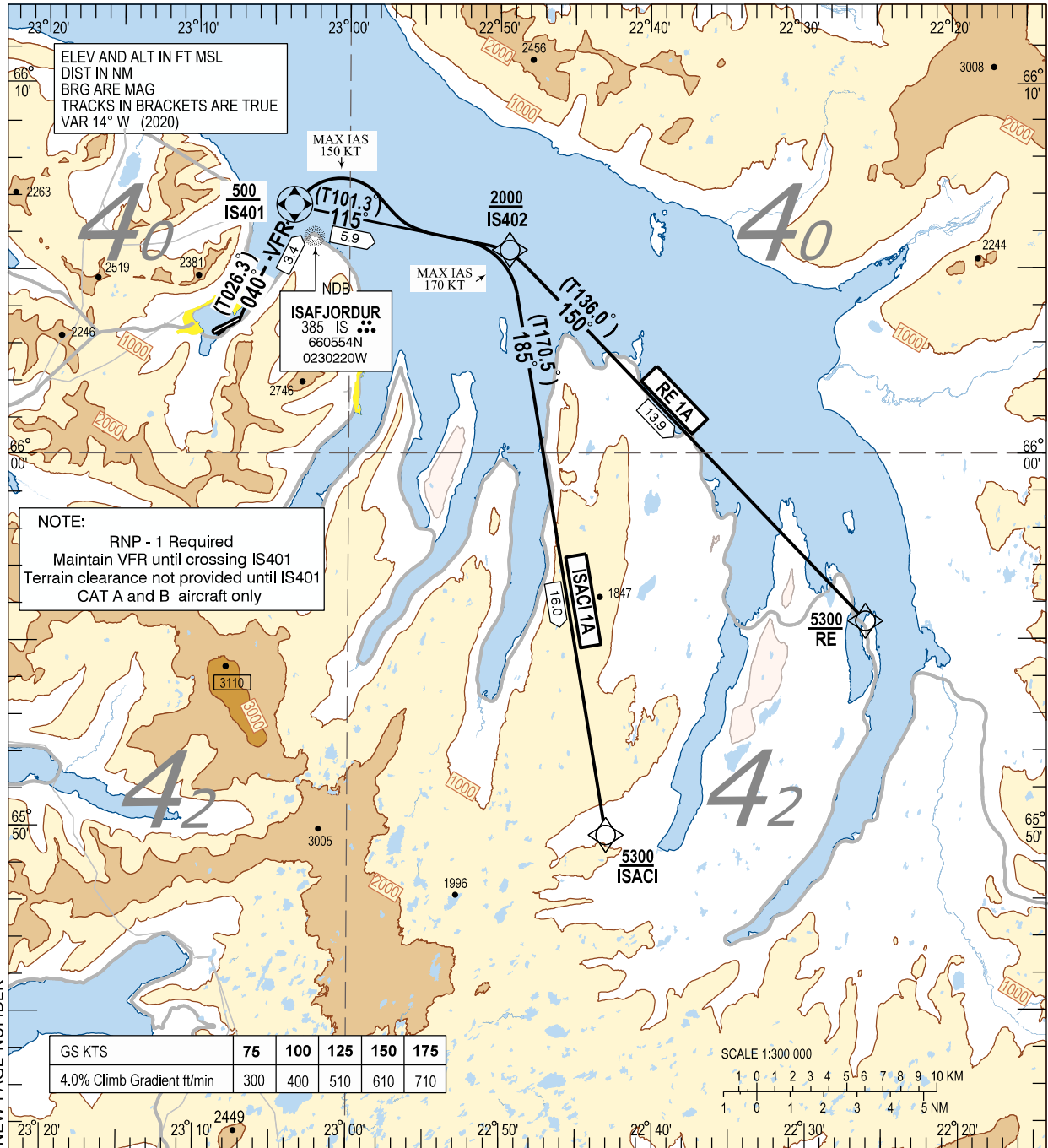
Isafjordur RNP SID RWY 08 - ISACI 1A, RE 1A

STANDARD DEPARTURE CHART -
INSTRUMENT (SID) - ICAO

TRANSITION
ALTITUDE 7000
AD ELEV 8

ISAFJORDUR AFIS	118.800
REYKJAVIK ACC	119.700

BIIS - ISAFJORDUR
RNP SID RWY 08
ISACI 1A, RE 1A



CHANGES: NEW PAGE NUMBER

Designator	Route	Restrictions	After Take-Off	
			CLIMB TO	Contact
ISACI 1A (ISACI ONE ALPHA DEPARTURE)	To IS401 on course 040°, right turn to IS402, right turn to ISACI.	MNM climb gradient of 4.0% i.e. 243 FT/NM is required to 3000 FT , thereafter climb gradient of 3.3% i.e. 201 FT/NM MAINTAIN VFR UNTIL IS401 MAX IAS 150 KT at IS401, Cross IS401 at 500 FT or above. MAX IAS 170 KT at IS402, Cross IS402 at 2000 FT or above. Cross ISACI at 5300 FT or above.	As cleared by ATC	Reykjavik Control 119.700 when instructed.
RE 1A (RE ONE ALPHA DEPARTURE)	To IS401 on course 040°, right turn to IS402, to RE.	MNM climb gradient of 4.0% i.e. 243 FT/NM is required to 5300 FT , thereafter climb gradient of 3.3% i.e. 201 FT/NM MAINTAIN VFR UNTIL IS401 MAX IAS 150 KT at IS401, Cross IS401 at 500 FT or above. MAX IAS 170 KT at IS402, Cross IS402 at 2000 FT or above. Cross RE at 5300 FT or above.	As cleared by ATC	Reykjavik Control 119.700 when instructed.

BIIS RNP SID RWY 08
Recommended Coding Table

ISACI 1A

Serial Number	Path Descriptor	Waypoint Identifier	Fly-over	Course / Track °M(°T)	Magnetic Variation	Distance	Turn Direction	Altitude (ft)	Speed (kt/h)	Navigation Specification
010	CF	IS401	Y	040 (026.3)	+14.2			A0500+	-150	RNP 1
020	TF	IS402	-	115 (101.3)	+14.0	5.9	R	A2000+	-170	RNP 1
030	TF	ISACI	-	185 (170.5)	14.0	16.0	R	A5300+		RNP 1

RE 1A

Serial Number	Path Descriptor	Waypoint Identifier	Fly-over	Course / Track °M(°T)	Magnetic Variation	Distance	Turn Direction	Altitude (ft)	Speed (kt/h)	Navigation Specification
010	CF	IS401	Y	040 (026.3)	+14.2			A0500+	-150	RNP 1
020	TF	IS402	-	115 (101.3)	+14.0	5.9	R	A2000+	-170	RNP 1
030	TF	RE	-	150 (136.0)	+13.9	13.9		A5300+		RNP 1

Waypoint coordinates

Waypoint Identifier	Coordinates		Display	
	LAT	LON	LAT	LON
IS401	660643.53 N	0230333.57 W	N 6606.72	W 02303.56
IS402	660533.81 N	0224923.15 W	N 6605.56	W 02249.39
ISACI	654950.09 N	0224259.35 W	N 6549.83	W 02242.99
RE	655535.35 N	0222553.54 W	N 6555.59	W 02225.89