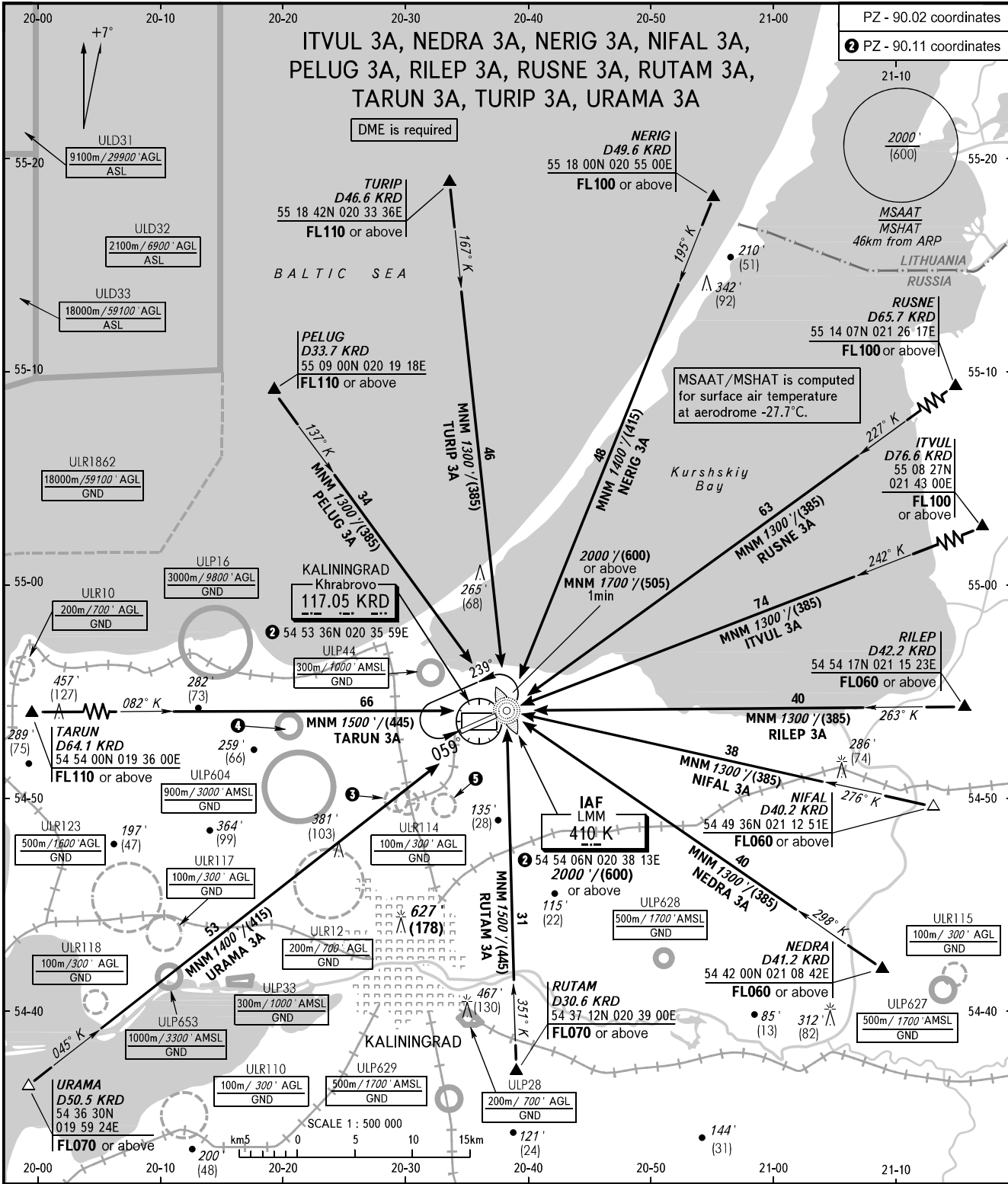


STANDARD ARRIVAL CHART  
INSTRUMENT (STAR) - ICAO

KALININGRAD, RUSSIA  
KHRABROVO  
RWY 06

TRANSITION  
LEVEL: **1**



|   |                    |
|---|--------------------|
| APPROACH TOWER  | 126.000<br>127.200 |
| <p>BEARINGS AND TRACKS ARE MAGNETIC ALTITUDES AND ELEVATIONS IN FEET HEIGHTS IN METRES DISTANCES IN KILOMETRES</p> <p>Alt set: -QNH(QFE on req);<br/>-hPa(mm on req).</p> |                    |

- 1** TRANSITION LEVEL:
- FL050 when QNH is 1013 hPa (760mm mercury column) or above;
  - FL060 when QNH is 977 hPa (733mm mercury column) or above, but less than 1013 hPa (760mm mercury column);
  - FL070 when QNH is less than 977 hPa (733mm mercury column).
- 3** ULR113 100m/300' AGL GND
- 4** ULP626 500m/1700' AMSL GND
- 5** ULR111 100m/300' AGL GND