

STANDARD DEPARTURE CHART - INSTRUMENT

RJFS / SAGA

SID

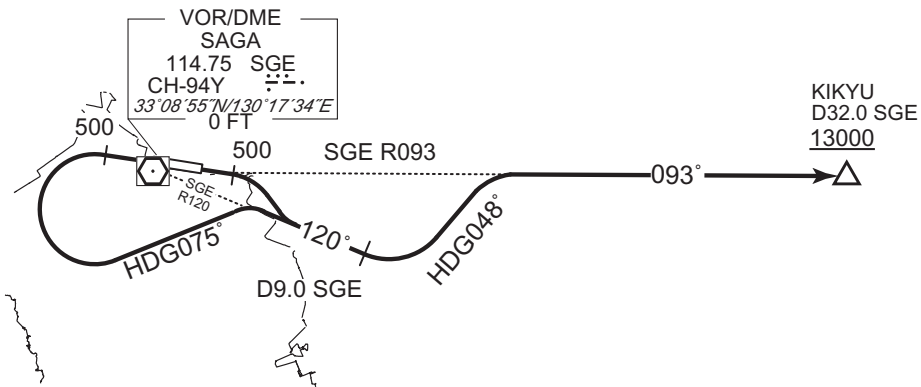
KIKYU FIVE DEPARTURE

RWY11 : Climb RWY HDG to 500FT, turn right,...

RWY29 : Climb RWY HDG to 500FT, turn left HDG075° to intercept and proceed...
... via SGE R120 to 9.0DME, turn left HDG048° to intercept
and proceed via SGE R093 to KIKYU.

Cross KIKYU at or above 13000FT.

Note RWY29 : 3.5% climb gradient required up to 500FT.



CHANGE : Description of PROC name.

STANDARD DEPARTURE CHART - INSTRUMENT

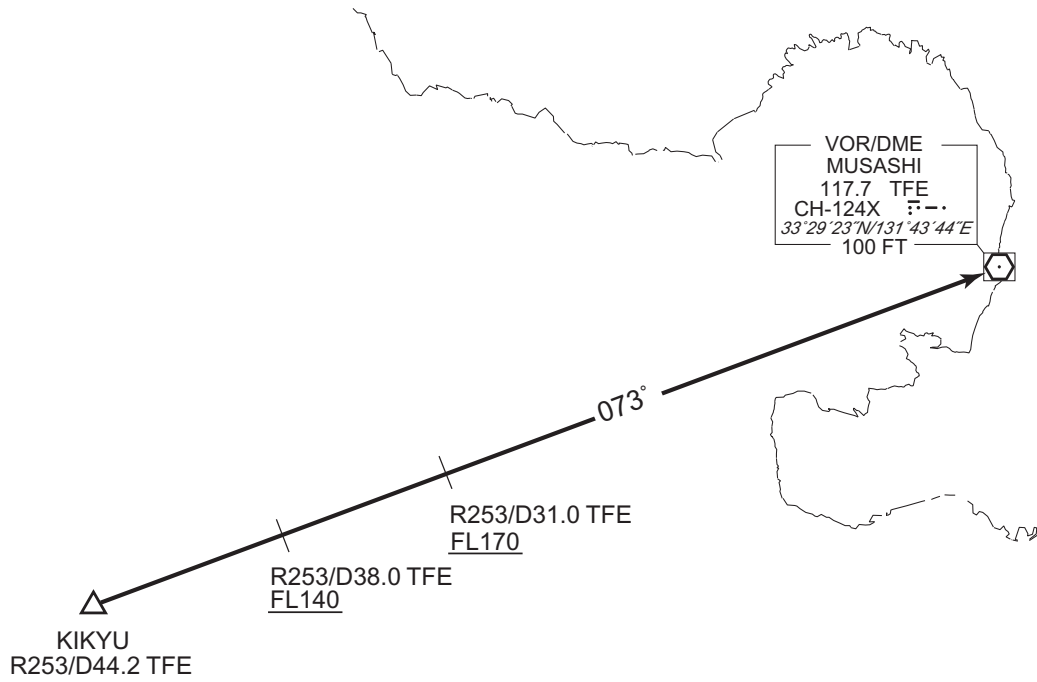
RJFS / SAGA

TRANSITION

MUSASHI TRANSITION

From over KIKYU, via TFE R253 to TFE VOR/DME.

Cross TFE R253/38.0DME at or above FL140, cross TFE R253/31.0DME at or above FL170.



CHANGE : Description of PROC name.

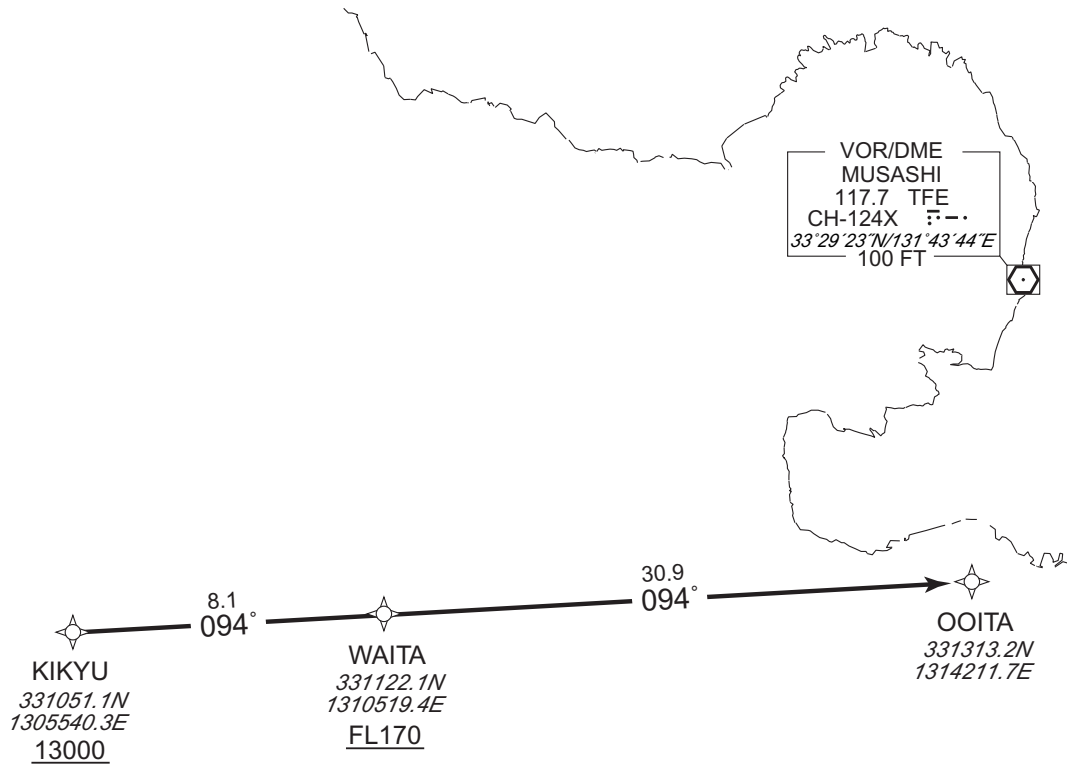
STANDARD DEPARTURE CHART - INSTRUMENT

RJFS / SAGA

RNAV TRANSITION

OOITA TRANSITION		RNAV1
NOTE 1) DME/DME/IRU or GNSS required. 2) RADAR service required.	Critical DME	-
	DME GAP	-
	Inappropriate Navaids	See AD1.1.6.10.3. Inappropriate NAVAIDS for RNAV1

VAR 8° W



From KIKYU at or above 13000FT, to WAITA at or above FL170, to OOITA.

Serial Number	Path Descriptor	Waypoint Identifier	Fly Over	Course °M(°T)	Magnetic Variation	Distance (NM)	Turn Direction	Altitude (FT)	Speed (KIAS)	Vertical Angle	Navigation Specification
001	IF	KIKYU	-	-	-7.9	-	-	+13000	-	-	RNAV1
002	TF	WAITA	-	094 (086.3)	-7.9	8.1	-	+FL170	-	-	RNAV1
003	TF	OOITA	-	094 (086.4)	-7.9	30.9	-	-	-	-	RNAV1

CHANGE : VAR.

INTENTIONALLY LEFT BLANK