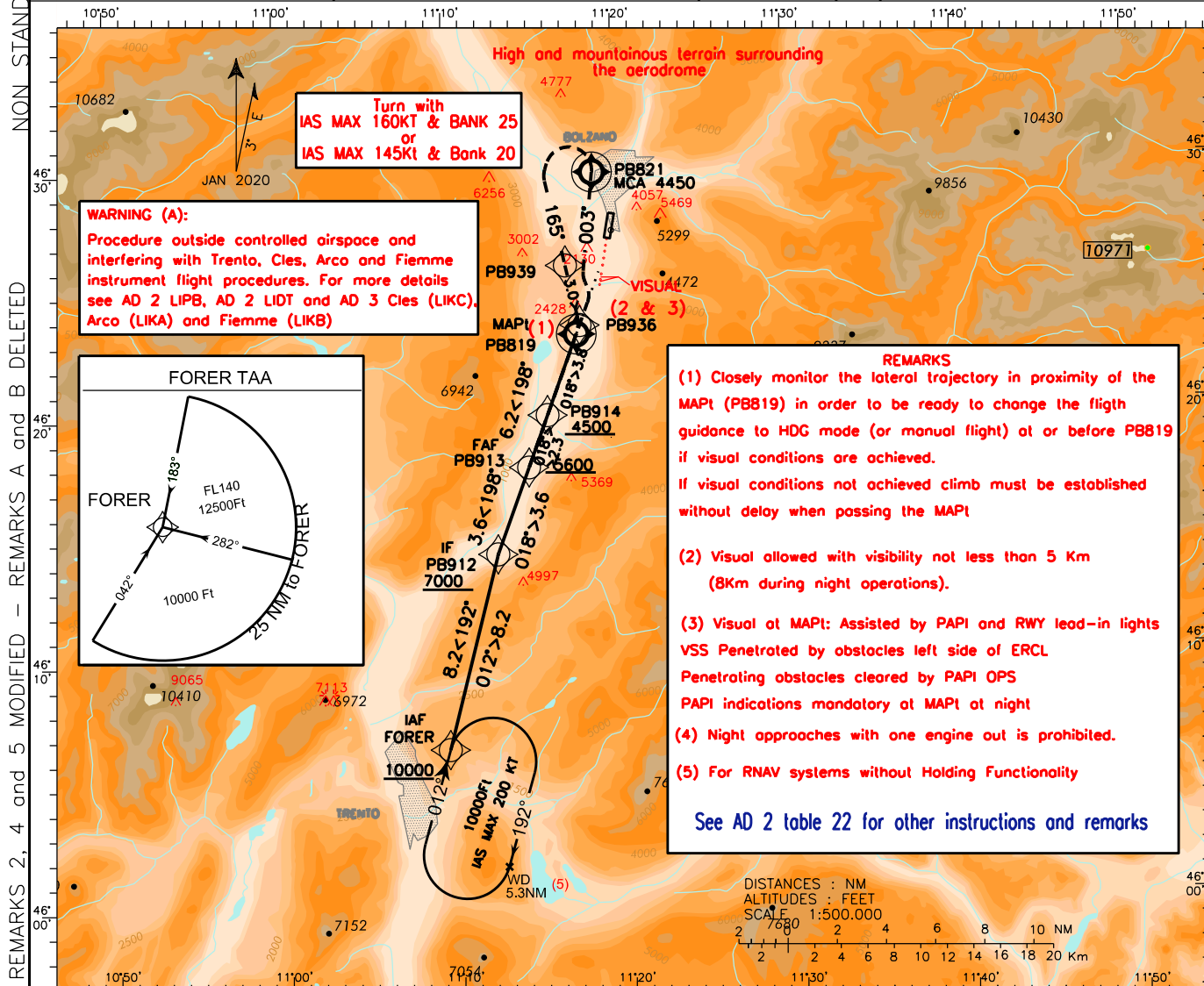
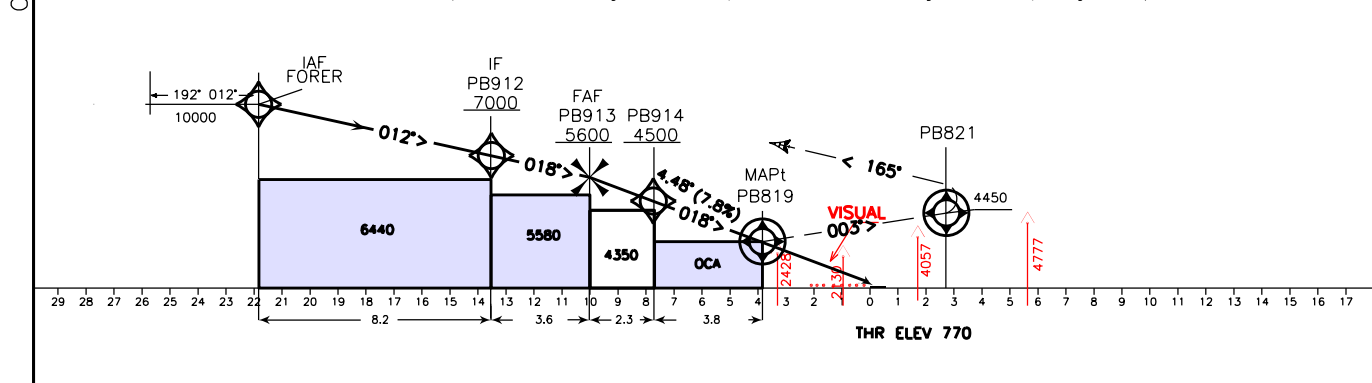


Final approach track offset 10.9' from RWY centreline. Final approach track intersects extended RWY centreline 1NM before THRO1	FIS <i>Padova Info</i> 124.150 (120.725)	AD ELEV	L I P B	<b>BOLZANO</b> RNP APCH INSTRUMENT GUIDED CLOUD BREAKING PROCEDURE RWY 01 CAT A/B/C/ ACFT
	AFIS <i>Bolzano Aerodrome Info</i> 120.600	787		



TRANSITION ALT 10000 Missed Approach: Proceed on track 003° climbing to 10000ft. Over PB821 turn left (IAS MAX 160kt/Bank Angle 25° or IAS MAX 145kt/Bank Angle 20°) on track 165° bound to PB939-PB936, then turn right (IAS MAX 160kts Bank Angle 25°) to PB913 then PB912 - FORER  
(in case 5.2% climb gradient is complied with, maintain such gradient until passing 5000ft)



OCA (OCH)		A	B	C	FT PER MIN GS Distance to MAPt Altitude MNM SECT ALT LIPB ARP FL 165 15000 ft
STRAIGHT IN APPROACH	LNAV	M. A. MNM CLIMB GRADIENT 5.2%	2750 (1980)		
		M. A. MNM CLIMB GRADIENT 2.5%	3650 (2880)		
CIRCLING		NOT ALLOWED (***)			

(\*\*\*)TRAFFIC CIRCUIT FOR RWY 19 ALLOWED ONLY DURING DAYLIGHT AND WEST OF THE FIELD

Only specifically qualified crews with authorized type of ACFT are allowed to perform this procedure (see AD 2 LIPB Table 23)