

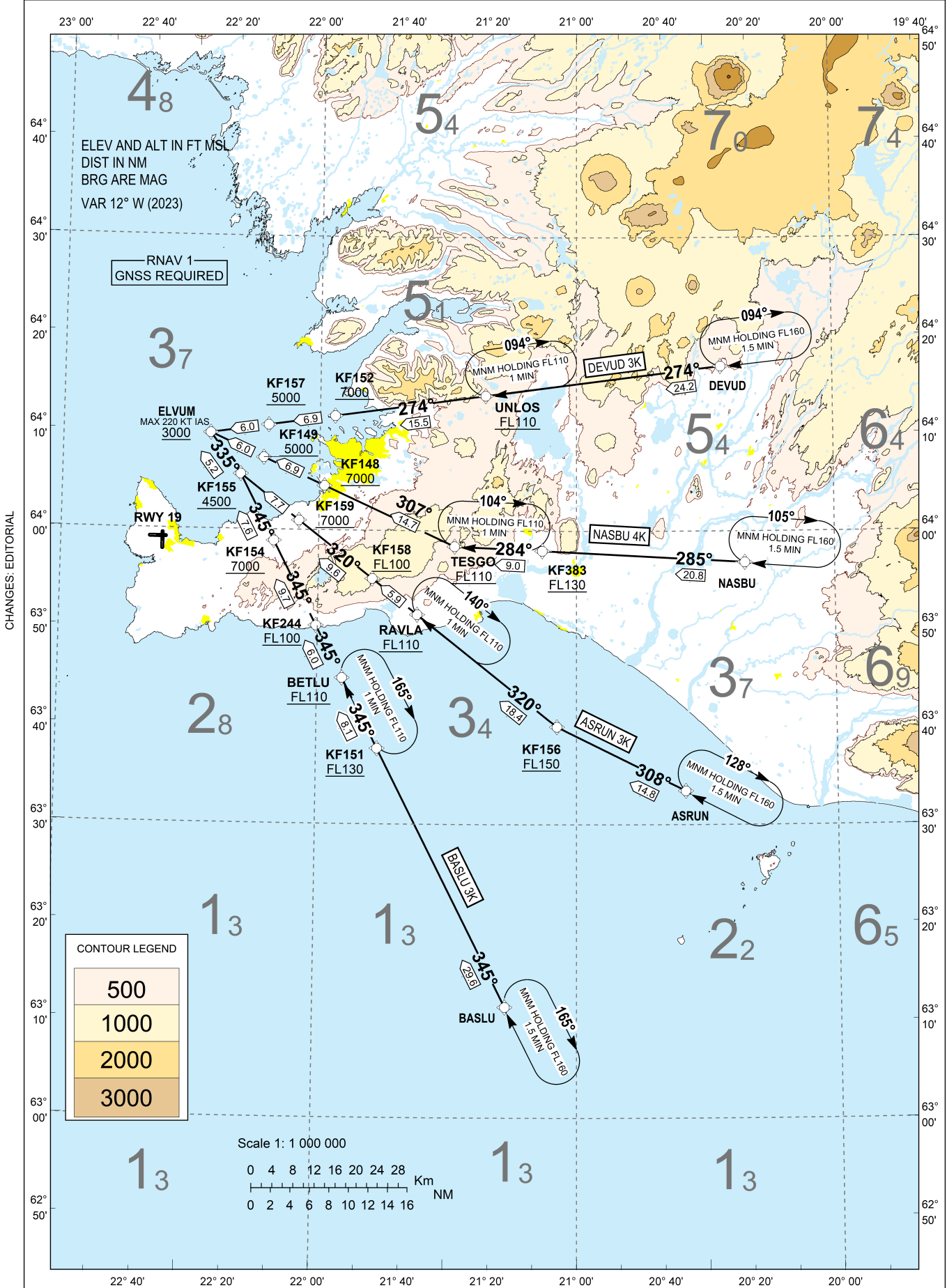
KEFLAVIK RNAV STAR RWY 19 (East)

STANDARD ARRIVAL CHART -  
INSTRUMENT (STAR) - ICAO  
CONTINUOUS DESCENT ARRIVALS

TRANSITION  
ALTITUDE 7000  
AD ELEV 170

ATIS	128.300
APP	119.300
TWR	118.300
ACC	119.700

BIKF - KEFLAVIK  
RNAV STAR RWY 19  
DEVUD 3K, NASBU 4K, ASRUN 3K, BASLU 3K



STANDARD ARRIVAL ROUTES -  
INSTRUMENT (STAR) - ICAO  
CONTINUOUS DESCENT ARRIVALS  
(RNAV1 STAR BASED ON GNSS)

BIKF - KEFLAVIK  
RNAV STAR RWY 19

**GENERAL:** RNAV1(GNSS) approval required.  
Vectoring may be used when necessary.  
Loss of RNAV1 capability - Advise ATC.  
Maximum speed below FL100: 250 kt IAS unless otherwise stated under RESTRICTIONS or instructed by ATC.

**RADIO COMMUNICATION FAILURE:** Set transponder to A 7600.  
Follow cleared or expected STAR until IAF, then start approach to assigned runway without delay.

**NON RNAV 1 ACFT:** State "UNABLE RNAV 1", expect radar vectoring.

**NOTE:** At first contact with KEFLAVIK APPROACH state callsign and ATIS received only.  
Change to Keflavik QNH at Transition Level or when passing last Flight Level restriction if higher.

DESIGNATOR	ROUTE	RESTRICTIONS	DESCEND	CLEARANCE LIMIT
DEVUD 3K	From DEVUD to UNLOS to KF152 to KF157 to ELVUM	Cross UNLOS at FL110 or above, cross KF152 at 7000 FT or above, cross KF157 at 5000 FT or above, cross ELVUM at 3000 FT or above, speed 220 KT IAS or less at ELVUM.	As cleared by ATC	ELVUM
NASBU 4K	From NASBU to KF383 to TESCO to KF148 to KF149 to ELVUM	Cross KF383 at FL130 or above, cross TESCO at FL110 or above, cross KF148 at 7000 FT or above, cross KF149 at 5000 FT or above, cross ELVUM at 3000 FT or above, speed 220 KT IAS or less at ELVUM	As cleared by ATC	ELVUM
ASRUN 3K	From ASRUN to KF156 to RAVLA to KF158 to KF159 to KF155 to ELVUM	Cross KF156 at FL150 or above, cross RAVLA at FL110 or above, cross KF158 at FL100 or above, cross KF159 at 7000 FT or above, cross KF155 at 4500 FT or above, cross ELVUM at 3000 FT or above, speed 220 KT IAS or less at ELVUM	As cleared by ATC	ELVUM
BASLU 3K	From BASLU to KF151 to BETLU to KF244 to KF154 to KF155 to ELVUM	Cross KF151 at FL130 or above, cross BETLU at FL110 or above, cross KF244 at FL100 or above, cross KF154 at 7000 FT or above, cross KF155 at 4500 FT or above, cross ELVUM at 3000 FT or above, speed 220 KT IAS or less at ELVUM	As cleared by ATC	ELVUM

CHANGES: EDITORIAL