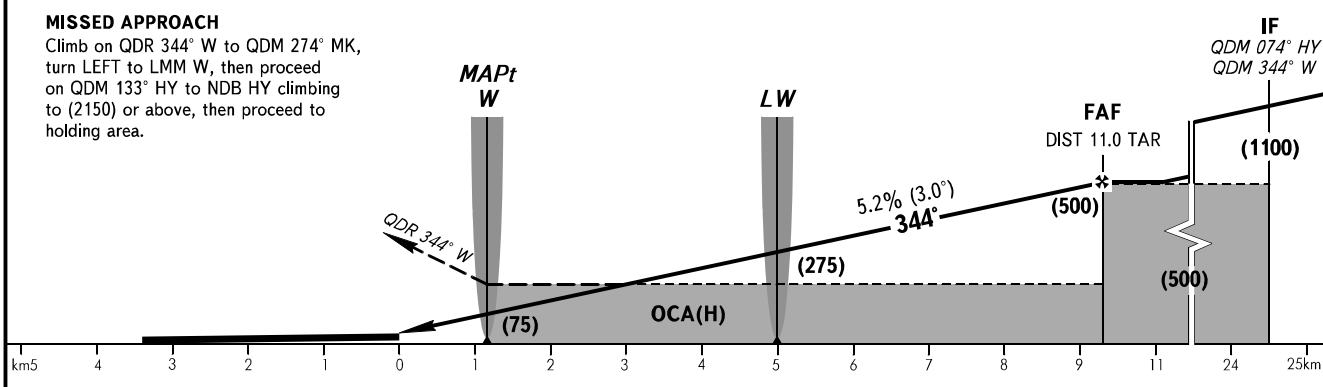
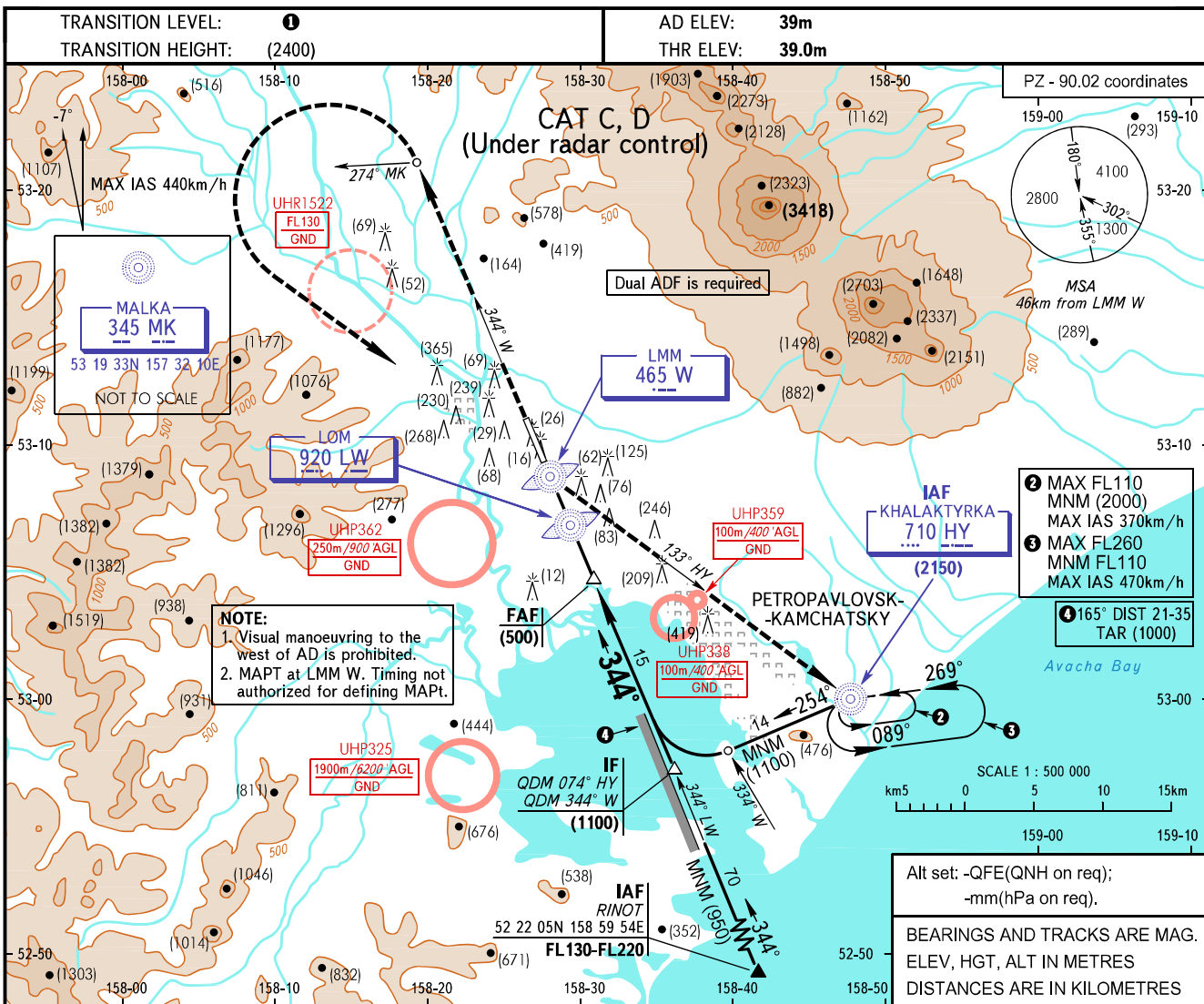


**INSTRUMENT
APPROACH
CHART - ICAO**

START **118.100**
RADAR **119.400**

**PETROPAVLOVSK-KAMCHATSKY, RUSSIA
YELIZOVO
NDB Z RWY 34L**



OCA(H)		A	B	C	D						
Straight-in	MNM climb gradient for missed APCH	2.5%		635(595)	635(595)						
		4.0%		230(195)	230(195)						
Circling				520(480)	555(520)						
GROUND SPEED		km/h	150	180	210	240	270	300	330	360	390
RATE OF DESCENT		m/s	2.2	2.6	3.0	3.5	3.9	4.3	4.8	5.2	5.6

1 TRANSITION LEVEL:
- FL090 when QFE is 756mm mercury column or above;
- FL100 when QFE is 729mm mercury column or above, but less than 756mm mercury column;
- FL110 when QFE is less than 729mm mercury column.

WARNING
During missed approach maintain climb gradient of 4.0% up to (1400).

CHANGE: UHP359, UHP362