

**INSTRUMENT APPROACH CHART - ICAO**

**AERODROME ELEV 50**

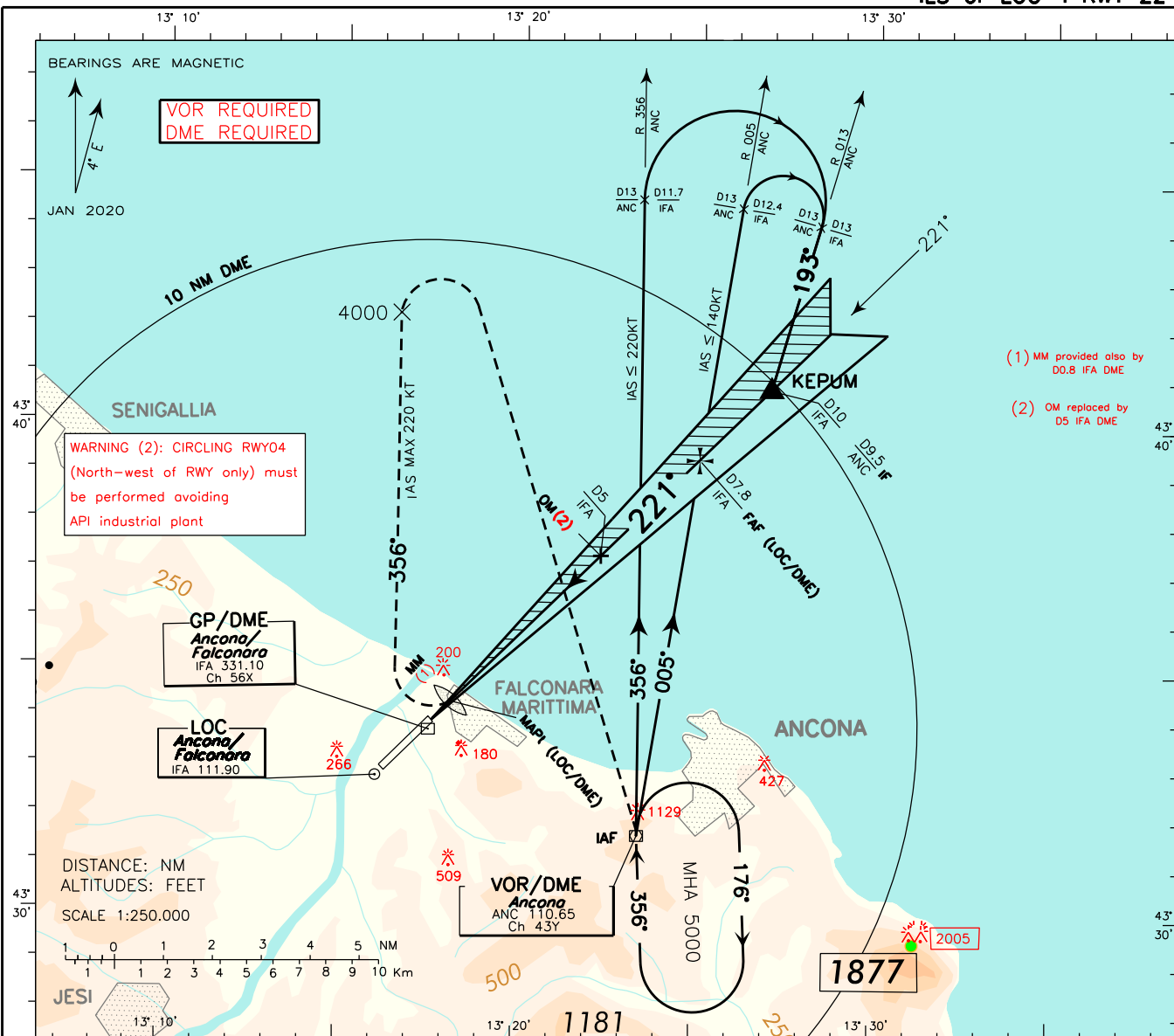
**APP Ancona APP  
TWR Falconara TWR**

**125.325  
119.805**

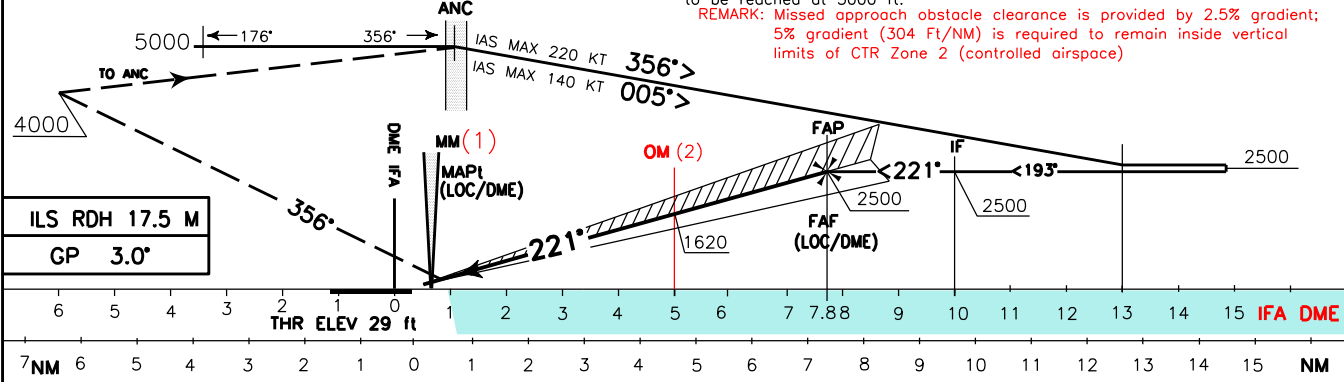
**ANCONA/FALCONARA  
LIPY  
ILS or LOC-Y RWY 22**

DOC 8168 ED.6 - 2014-AMDT 7

CHANGE: REPRINTING



TRANSITION ALT 6000  
 MISSED APPROACH: Climbing to 5000 ft, continue RWY heading until passing 600 ft then turn right TR 356°. Reaching 4000 ft turn right to ANC VOR (IAS MAX 220KT) to be reached at 5000 ft.  
 REMARK: Missed approach clearance is provided by 2.5% gradient; 5% gradient (304 Ft/NM) is required to remain inside vertical limits of CTR Zone 2 (controlled airspace)



OCA (OCH)		A	B	C	D	WARNING (1): in order to avoid overflying of "API" industrial plant, perform missed approach turns 15 DEG bank angle.	FT PER MIN	GS	D5 IFA-MM	MM-THR	DME IFA	ALT (HGT)	MNM SECT ALT ANC VOR
STRAIGHT IN APPROACH	ILS	321 (292)	331 (302)	341 (312)	351 (322)		318	60	4 : 16	0 : 34	6	1937(1908)	
	LOC/DME	470 (441)				477	90	2 : 51	0 : 22	4	1301(1272)		
CIRCLING (See WARNING 2) NW of RWY only		750 (700)	1120 (1070)	1180 (1130)	636	120	2 : 08	0 : 17	3	983 (954)			
					795	150	1 : 43	0 : 13	2	665 (636)			