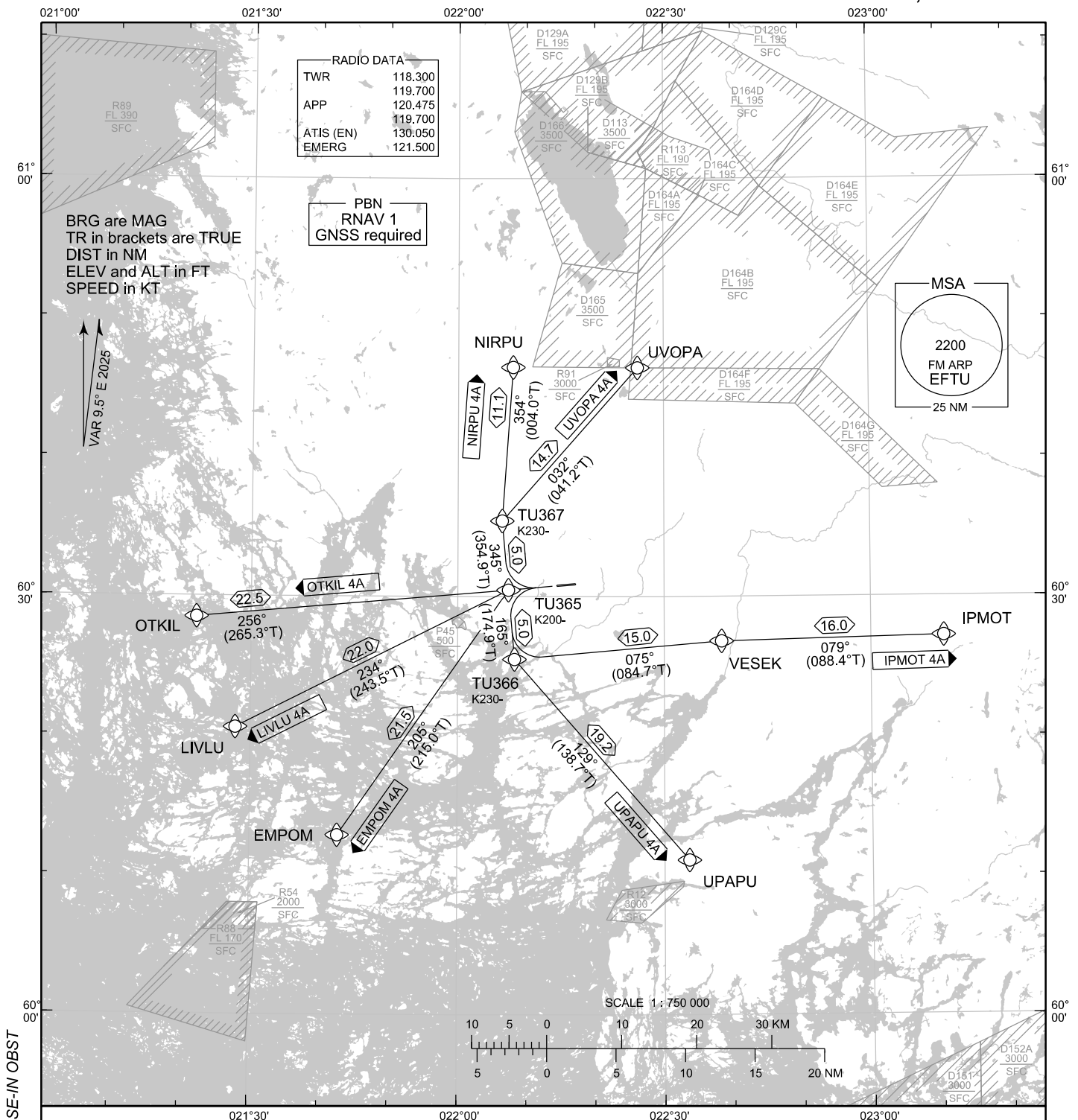


STANDARD DEPARTURE CHART
INSTRUMENT (SID) - ICAO

TRANSITION ALT
5000

RNAV SID RWY 26
TURKU AERODROME
TURKU, FINLAND



CHG: MAG VAR, CLOSE-IN OBST

RNAV SID RWY 26

EMPOM 4A IPMOT 4A LIVLU 4A NIRPU 4A OTKIL 4A UPAPU 4A UVOPA 4A

DME/DME OPS: NOT SUPPORTED

ROUTES: RNAV PROC CODING ON THE VERSO OF THE CHART

SQUAWK: WHEN LINING UP SQUAWK THE ASSIGNED CODE

INITIAL CLIMB: MNM TURNING ALT ACCORDING TO RTE CODING
CLOSE-IN OBSTACLES EXIST, SEE EFTU AD 2.10 - 5

NOISE ABATEMENT: AFTER TAKE-OFF CLIMB AS RAPIDLY AS POSSIBLE TO AT LEAST 2000 FT ABOVE AD ELEV
PUBLISHED SID ROUTES ARE ALSO MINIMUM NOISE ROUTINGS

AREA MNM ALT: SEE AMA INDEX, AIP ENR 6.1 - 3

EFTU RNAV SID RWY 26										
RTE NAV SPEC	SEQ NR	P/T	WPT		MAG	GEO TR	DIST NM	Turn Direction	Constraints	
			ID	Flyover					LVL	Speed
EMPOM 4A RNAV 1	010	CA	-	-	255°	264.5°T	-		A550+	
	020	DF	TU365	-	-	-	-			K200-
	030	TF	EMPOM	-	205°	215.0°T	21.5			
IPMOT 4A RNAV 1	010	CA	-	-	255°	264.5°T	-		A550+	
	020	DF	TU365	-	-	-	-			K200-
	030	TF	TU366	-	165°	174.9°T	5.0	L		K230-
	040	TF	VESEK	-	075°	084.7°T	15.0			
	050	TF	IPMOT	-	079°	088.4°T	16.0			
LIVLU 4A RNAV 1	010	CA	-	-	255°	264.5°T	-		A550+	
	020	DF	TU365	-	-	-	-			K200-
	030	TF	LIVLU	-	234°	243.5°T	22.0			
NIRPU 4A RNAV 1	010	CA	-	-	255°	264.5°T	-		A550+	
	020	DF	TU365	-	-	-	-			K200-
	030	TF	TU367	-	345°	354.9°T	5.0			K230-
	040	TF	NIRPU	-	354°	004.0°T	11.1			
OTKIL 4A RNAV 1	010	CA	-	-	255°	264.5°T	-		A550+	
	020	DF	TU365	-	-	-	-			K200-
	030	TF	OTKIL	-	256°	265.3°T	22.5			
UPAPU 4A RNAV 1	010	CA	-	-	255°	264.5°T	-		A550+	
	020	DF	TU365	-	-	-	-			K200-
	030	TF	TU366	-	165°	174.9°T	5.0	L		K230-
	040	TF	UPAPU	-	129°	138.7°T	19.2			
UVOPA 4A RNAV 1	010	CA	-	-	255°	264.5°T	-		A550+	
	020	DF	TU365	-	-	-	-			K200-
	030	TF	TU367	-	345°	354.9°T	5.0	R		K230-
	040	TF	UVOPA	-	032°	041.2°T	14.7			
WPT COORD										
SEE PAGE EFTU AD 2.15 - 1										