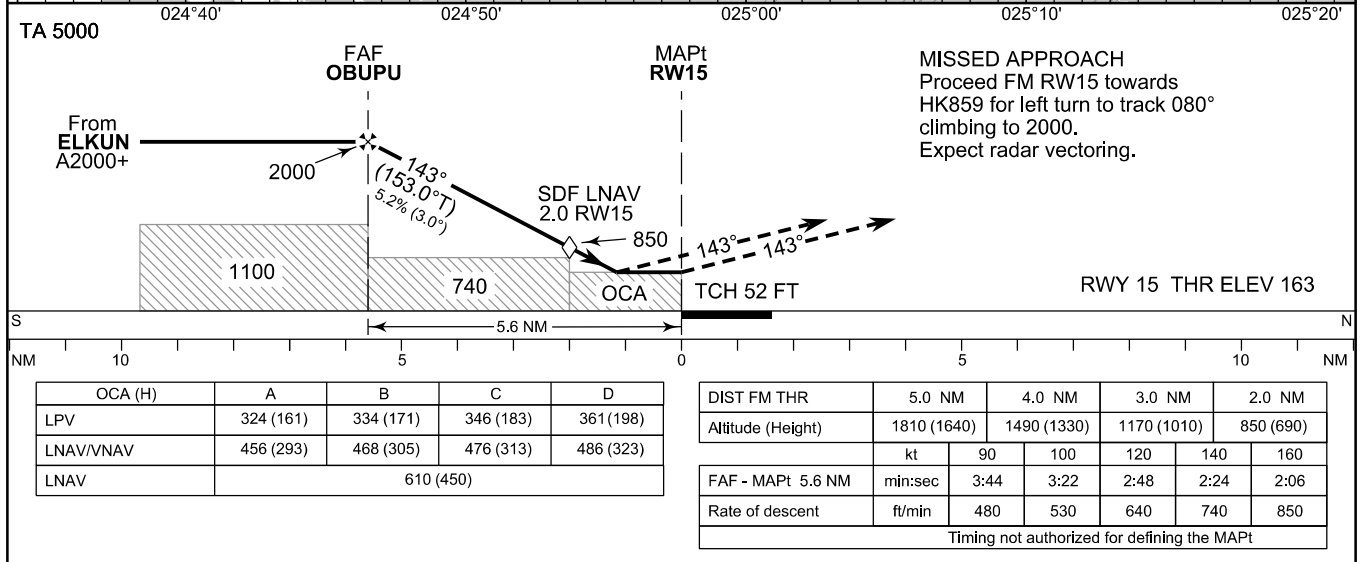


CHG: MAG VAR, OCA (H), Baro-VNAV MIN T, FAS DB, ADDN SBAS CAT I, MOCA



OCA (H)	A	B	C	D
LPV	324 (161)	334 (171)	346 (183)	361 (198)
LNAV/VNAV	456 (293)	468 (305)	476 (313)	486 (323)
LNAV	610 (450)			

DIST FM THR	5.0 NM	4.0 NM	3.0 NM	2.0 NM		
Altitude (Height)	1810 (1640)	1490 (1330)	1170 (1010)	850 (690)		
	kt	90	100	120	140	160
FAF - MAPt 5.6 NM	min:sec	3:44	3:22	2:48	2:24	2:06
Rate of descent	ft/min	480	530	640	740	850

Timing not authorized for defining the MAPt

EFHK RNP RWY 15										
PROC ID NAV SPEC	SEQ NR	P/T	WPT			MAG	GEO TR	DIST NM	Constraints	
			ID	Type	Flyover				LVL	Speed
H15 ELKUN RNP APCH	010	IF	ELKUN	IAF/IF	-	143°	152.9°T	2.9	A2000+	K210-
	020	TF	OBUPU	FAF	-				A2000+	
	030	TF	RW15	MAPt	Y	143°	153.0°T	5.6		
	040	TF	HK859	MATF	-	143°	153.0°T	3.0		
	050	CA	-	-	-	080°	090.4°T	-	A2000	

WPT COORD
SEE PAGE EFHK AD 2.15 - 1

FINAL APPROACH PARAMETERS			
LNAV Gradient	Baro-VNAV		TCH
	VPA	MNM T	
5.24 % (3.00°)	3.00°	-30°C	52 FT

SBAS DATA	
Approach ID	E15A
Service Provider	EGNOS
CRC remainder	52 81 C0 DB
Channel number	67966
Data Block	SEE EFHK AD 2.15 - 5