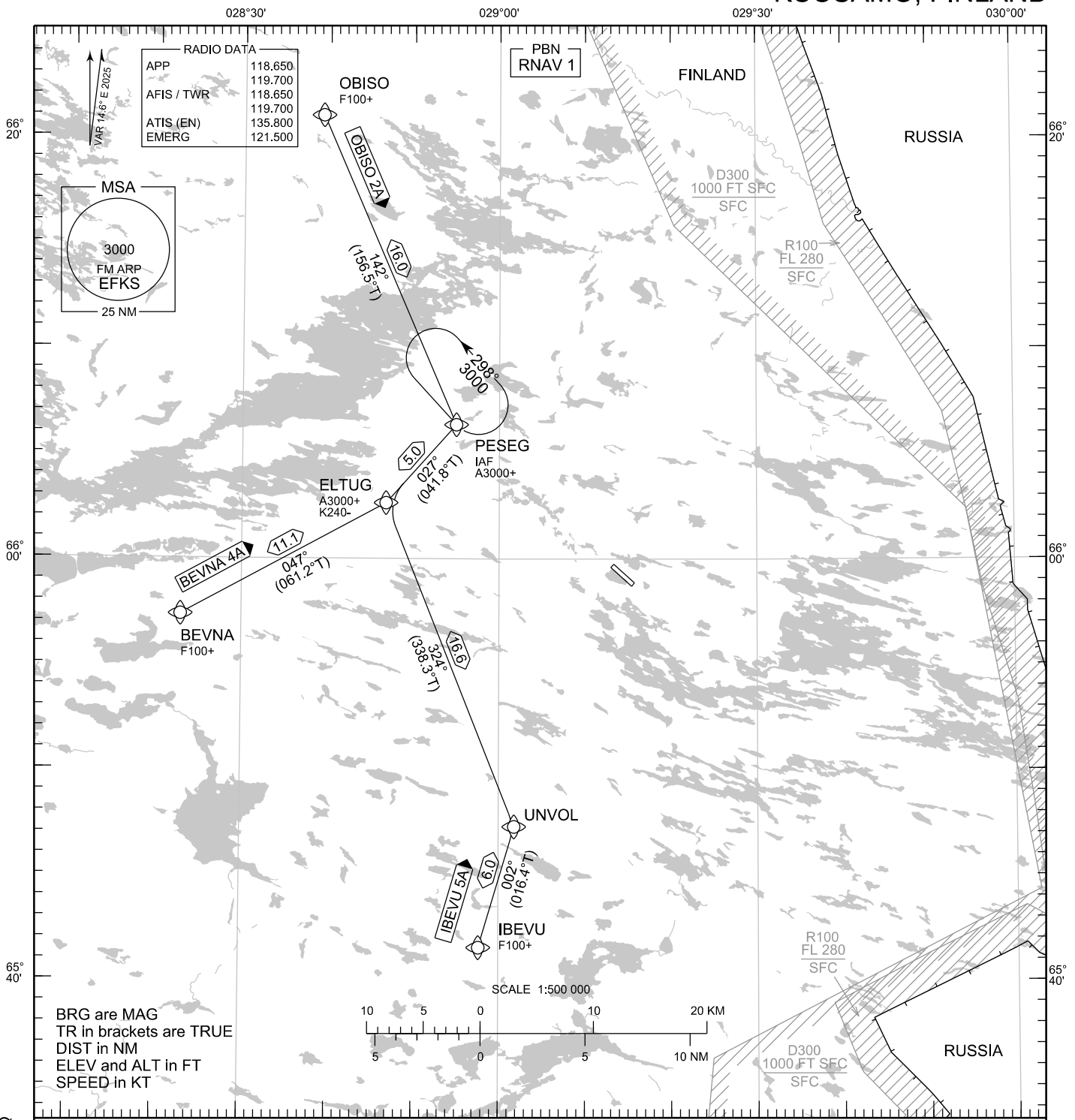


STANDARD ARRIVAL CHART
INSTRUMENT (STAR) - ICAO

TRANSITION ALT
5000

RNAV (GNSS) STAR RWY 12
KUUSAMO AERODROME
KUUSAMO, FINLAND



CHG: ADDN APP FREQ

RNAV STAR RWY 12

BEVNA 4A IBEVU 5A OBISO 2A

DME/DME OPS: NOT SUPPORTED

AREA MNM ALT:

SEE AMA INDEX, AIP ENR 6.1 - 3

ROUTES: RNAV PROC CODING ON THE VERSO OF THE CHART
ATC WILL GIVE DESCENT CLEARANCES

WPT CONSTRAINTS: ALT / FL / SPEED CONSTRAINTS MUST ALWAYS BE
FOLLOWED AS PUBLISHED UNLESS EXPLICITLY CANCELLED
BY ATC

CD OPS: BY ATC CLR IF TFC PERMITS. PLAN CD PATH ACCORDING
TO STAR

RCF: SELECT TRANSPONDER CODE 7600

RNAV STAR HAS BEEN GIVEN AND ACKNOWLEDGED:
FOLLOW THE STAR TO THE RESPECTIVE RWY AND
EXECUTE IAP AND LAND

EFKS RNAV STAR RWY 12										
RTE NAV SPEC	SEQ NR	P/T	WPT		MAG	GEO TR	DIST NM	Constraints		
			ID	Flyover				LVL	LVL	Speed
BEVNA 4A RNAV 1	010	IF	BEVNA	-	-	-	-	F100+		
	020	TF	ELTUG	-	047°	061.2°T	11.1	A3000+		K240-
	030	TF	PESEG	-	027°	041.8°T	5.0	A3000+		

IBEVU 5A RNAV 1	010	IF	IBEVU	-	-	-	-	F100+		
	020	TF	UNVOL	-	002°	016.4°T	6.0			
	030	TF	ELTUG	-	324°	338.3°T	16.6	A3000+		K240-
	040	TF	PESEG	-	027°	041.8°T	5.0	A3000+		

OBISO 2A RNAV 1	010	IF	OBISO	-	-	-	-	F100+		
	020	TF	PESEG	-	142°	156.5°T	16.0	A3000+		

RNAV Holdings								
ID	INBD TR	INBD MAG	Turn Direction	Speed	MNM HLDG LVL	TIME	DIST NM	
PESEG	132.2°T	118°	Left	K230-	A3000	1 MIN	-	

WPT COORD
SEE PAGE EFKS AD 2.15 - 1