

STANDARD DEPARTURE CHART - INSTRUMENT

RORS / SHIMOJISHIMA

SID

ANNIE SIX DEPARTURE

RWY17 : Climb RWY HDG to 500FT, turn right HDG037° to intercept and proceed ...

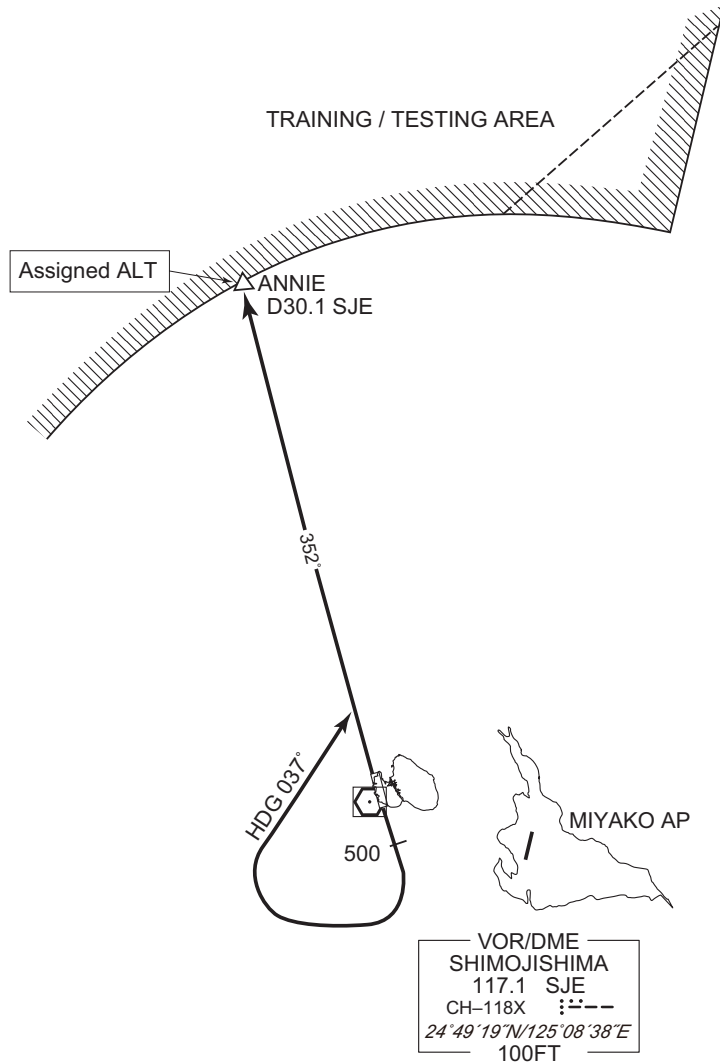
RWY35 : Climb ...

... via SJE R352 to ANNIE.

Cross ANNIE at assigned altitude.

Note RWY17 : 5.0% climb gradient required up to 500FT.

OBST ALT 93FT located at 0.2NM 162° FM end of RWY17.



CHANGE : PROC renamed. PROC course.