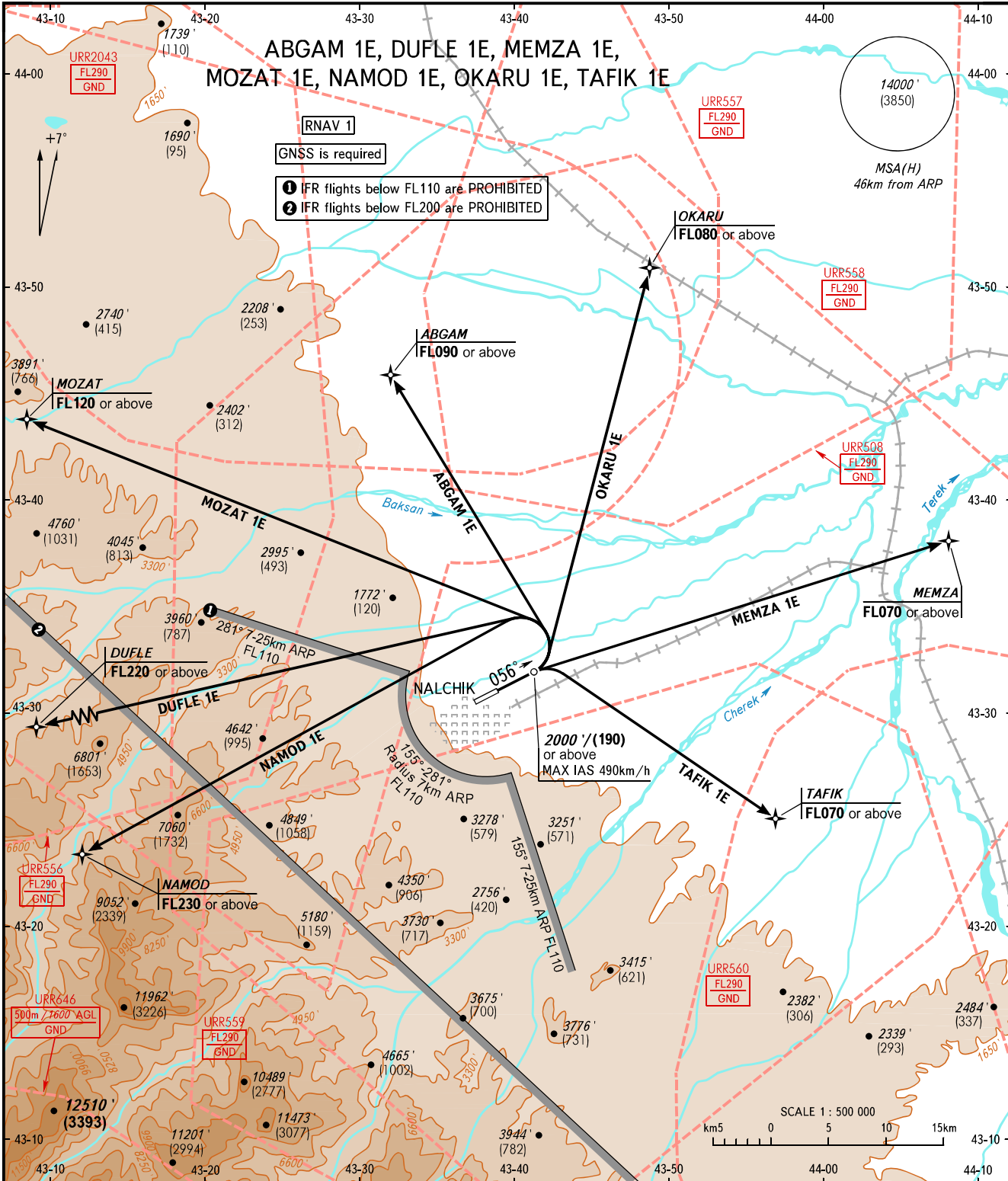


STANDARD DEPARTURE CHART
INSTRUMENT (SID) - ICAO

TRANSITION ALT: **5000'**
TRANSITION HGT: **(1105)**

NALCHIK, RUSSIA
NALCHIK
RNAV RWY 06



START **118.300**
APPROACH **126.900**

WARNING:

1. Turn before DER is PROHIBITED.
2. When URR558 is active the chart is not AVBL.
3. ABGAM 1E, MOZAT 1E - are not AVBL when URR556, URR557, URR2043 are active;
MEMZA 1E - is not AVBL when URR559, URR560 are active;
NAMOD 1E, DUFLE 1E - are not AVBL when URR556, URR2043 are active;
TAFIK 1E - is not AVBL when URR560, URR2043 are active;
OKARU 1E - is not AVBL when URR508, URR557, URR2043 are active.

The minimum climb gradients are as follows (required due to the airspace structure):

- 6.7% up to FL090 for SID ABGAM 1E;
- 9.0% up to FL220 for SID DUFLE 1E;
- 4.2% up to FL070 for SID MEMZA 1E;
- 11.3% up to FL230 for SID NAMOD 1E;
- 5.1% up to FL080 for SID OKARU 1E;
- 5.6% up to FL120 for SID MOZAT 1E;
- 6.0% up to FL070 for SID TAFIK 1E.

The minimum climb gradients are as follows (required due to obstacles):

- 5.8% up to FL090 for SID DUFLE 1E;
- 7.0% up to FL100 for SID NAMOD 1E.

BEARINGS AND TRACKS ARE MAGNETIC
ALTITUDES AND ELEVATIONS ARE FEET
HEIGHTS IN METRES
DISTANCES IN KILOMETRES

Alt set: - QNH (QFE on req);
- hPa (mm on req).

NOTE
HGT is given relative to RWY 24
THR ELEV 1378'/420m.

CHANGE: Heading, NOTE, URR556