

CUNEO/LEVALDIGI (LIMZ)

RWY 21 ATC DISCRETION
planned only for ACFT
NOT RNAV equipped

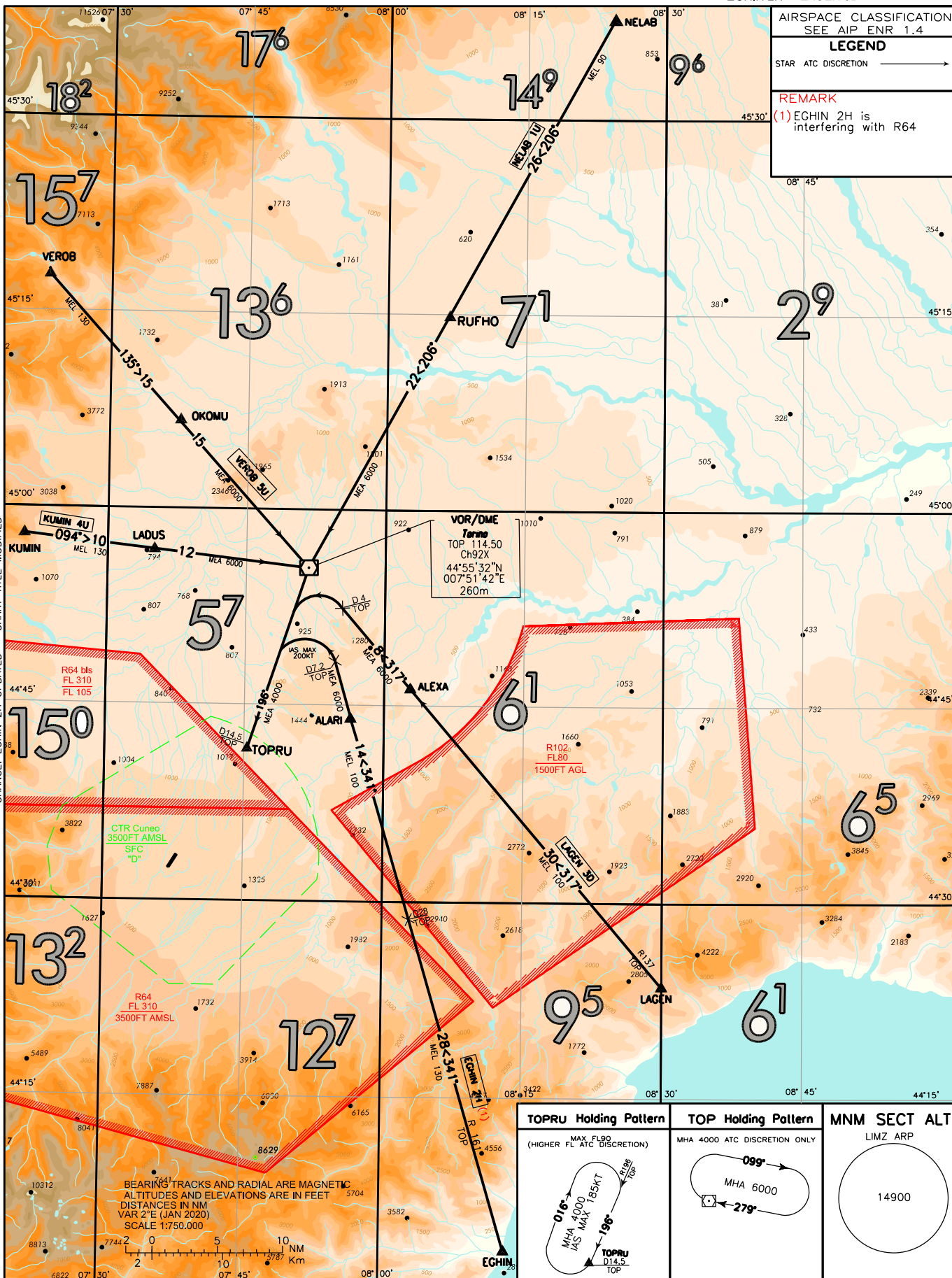
STANDARD ARRIVAL CHART
INSTRUMENT (STAR) - ICAO

TRANSITION ALTITUDE
6000 FT

APP Milano Radar 129.275 (125.275)
TWR Cuneo TWR 119.550

NELAB 1U VEROB 5U KUMIN 4U
EGHIN 2H LAGEN 3D

AIRSPACE CLASSIFICATION SEE AIP ENR 1.4
LEGEND STAR ATC DISCRETION →
REMARK (1) EGHIN 2H is interfering with R64



TOPRU Holding Pattern	TOP Holding Pattern	MNM SECT ALT
<p>(HIGHER FL ATC DISCRETION)</p>	<p>MHA 4000 ATC DISCRETION ONLY</p>	<p>LIMZ ARP</p> <p>14900</p>

CHANGE: EGHIN 2H UPDATED - CHART TITLE MODIFIED