

STANDARD DEPARTURE CHART - INSTRUMENT

RJFR / KITAKYUSHU

SID

ASARI THREE DEPARTURE

RWY 18 : Climb RWY HDG to 500FT, turn left HDG039° ,...

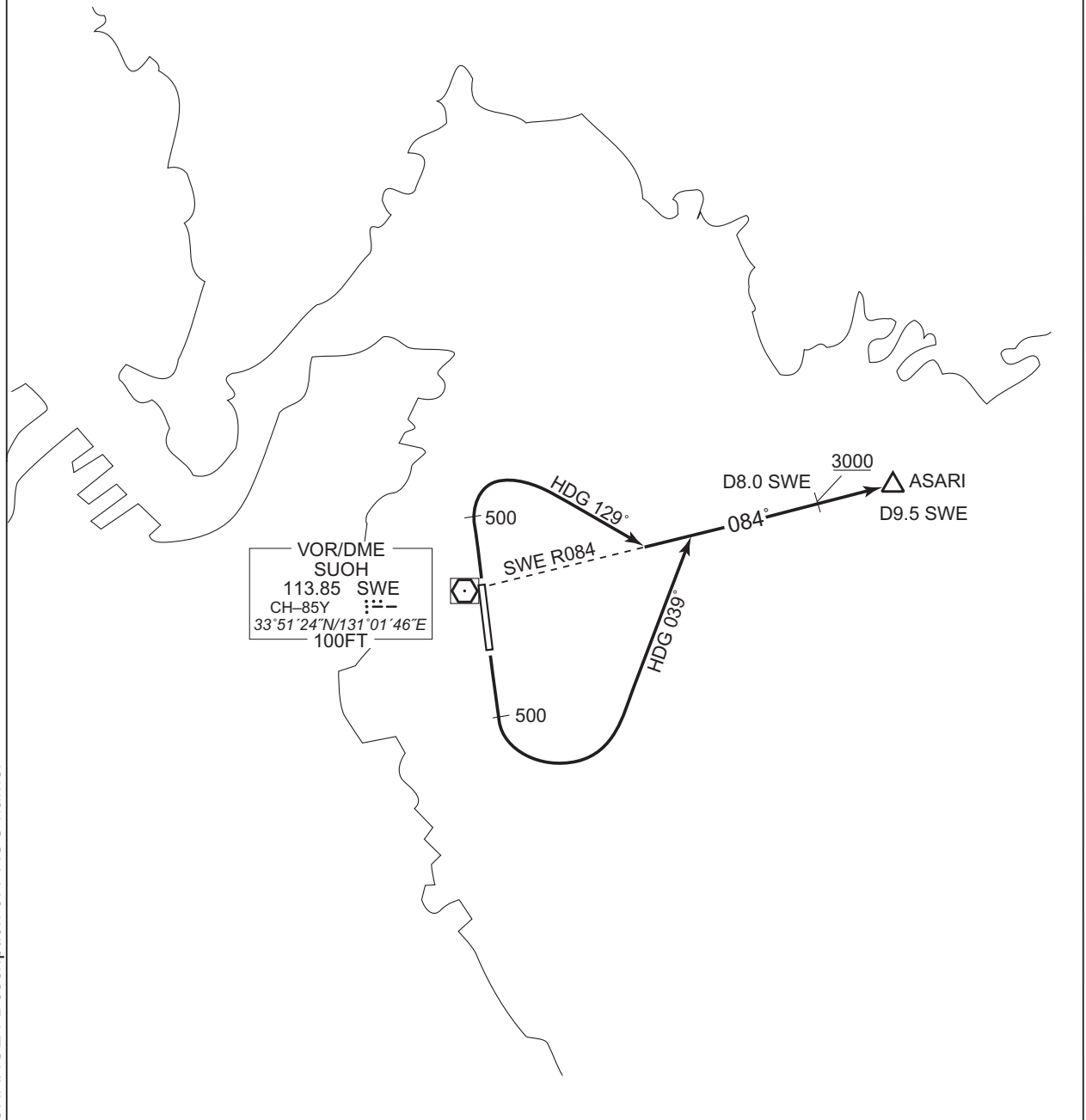
RWY 36 : Climb RWY HDG to 500FT, turn right HDG129° , ...

...to intercept and proceed via SWE R084 to ASARI.

Cross SWE 8.0DME at or above 3000FT.

Note RWY18 : 5.8% climb gradient required up to 500FT due to airspace restrictions only.

RWY36 : 4.0% climb gradient required up to 500FT due to airspace restrictions only.



CHANGE : Description of PROC name.

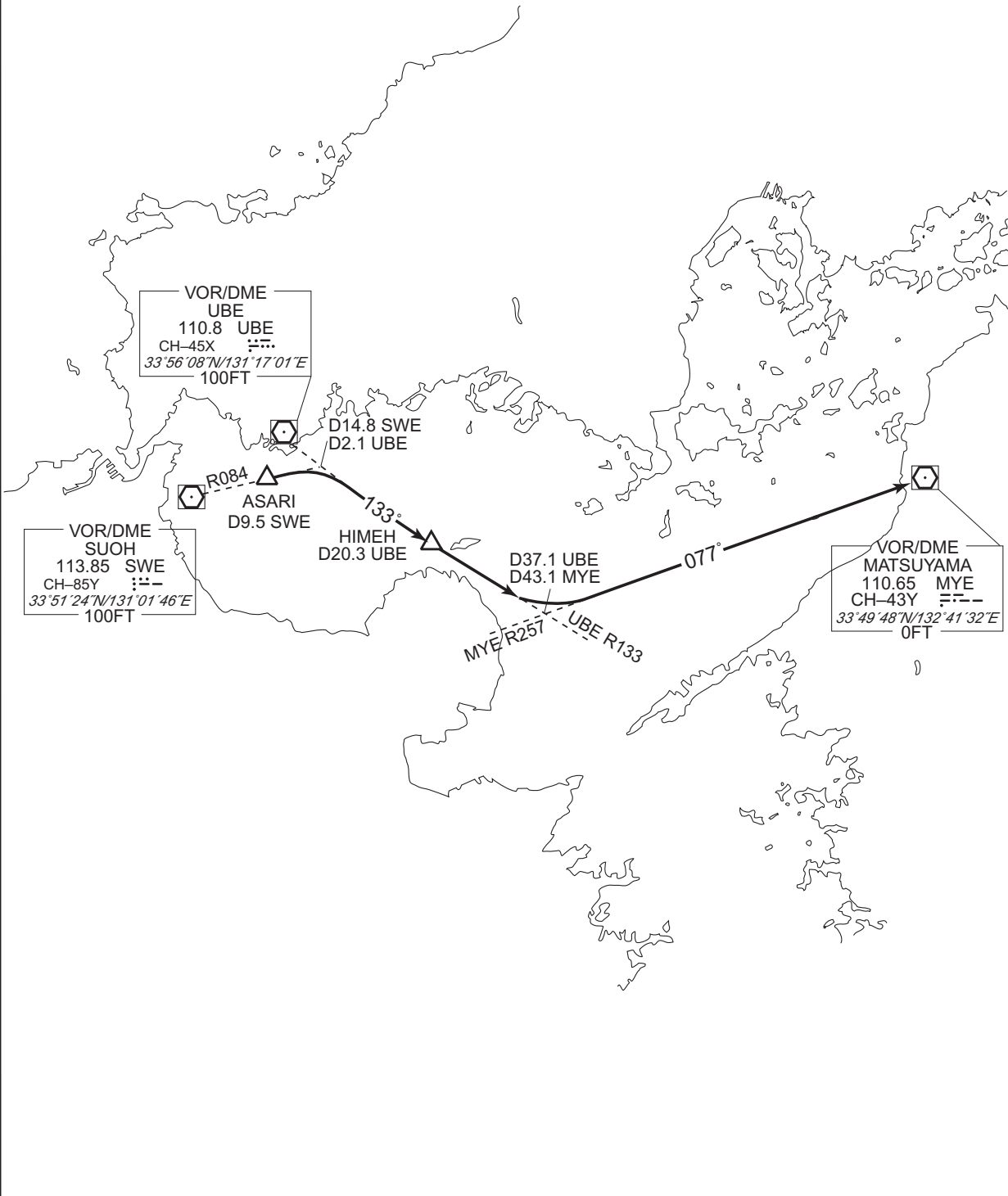
STANDARD DEPARTURE CHART - INSTRUMENT

RJFR / KITAKYUSHU

TRANSITION

MATSUYAMA TRANSITION

From over ASARI, via SWE R084 to intercept and proceed via UBE R133 to HIMEH,  
via UBE R133 to intercept and proceed via MYE R257 to MYE VOR/DME.



CHANGE : Description of PROC name.

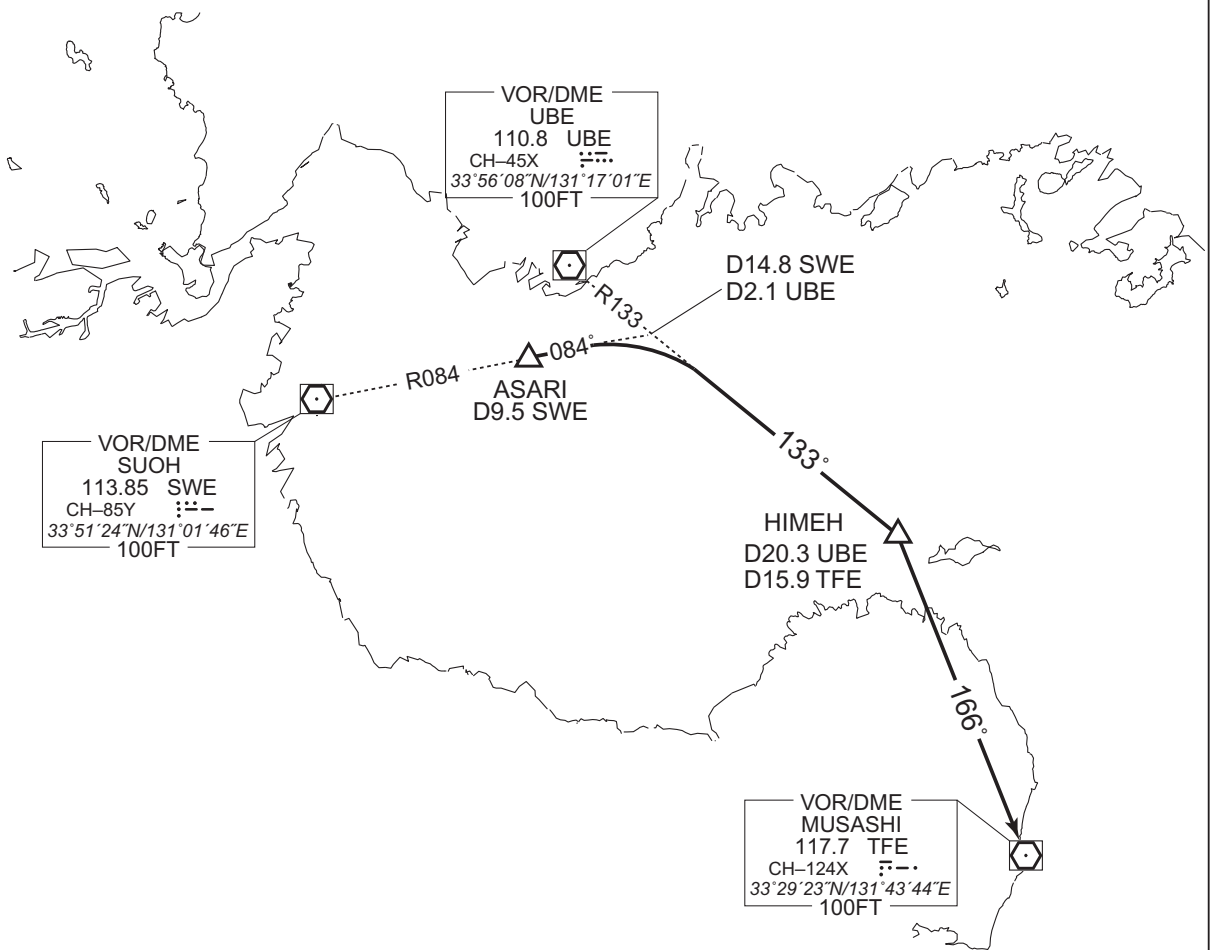
STANDARD DEPARTURE CHART - INSTRUMENT

RJFR / KITAKYUSHU

TRANSITION

MUSASHI TRANSITION

From over ASARI, via SWE R084 to intercept and proceed via UBE R133 to HIMEH, via TFE R346 to TFE VOR/DME.



CHANGE : Description of PROC name.