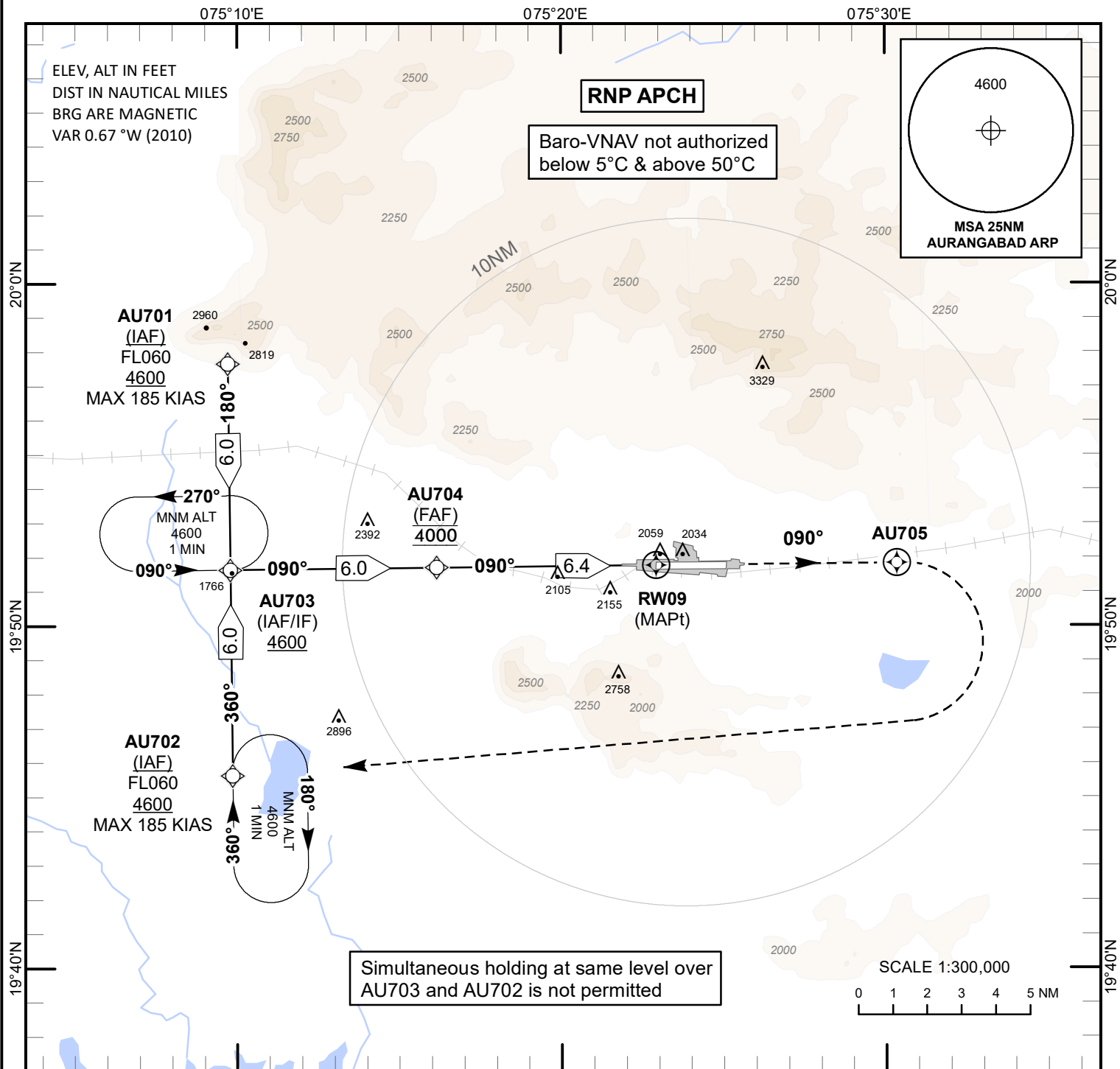


**INSTRUMENT APPROACH CHART**

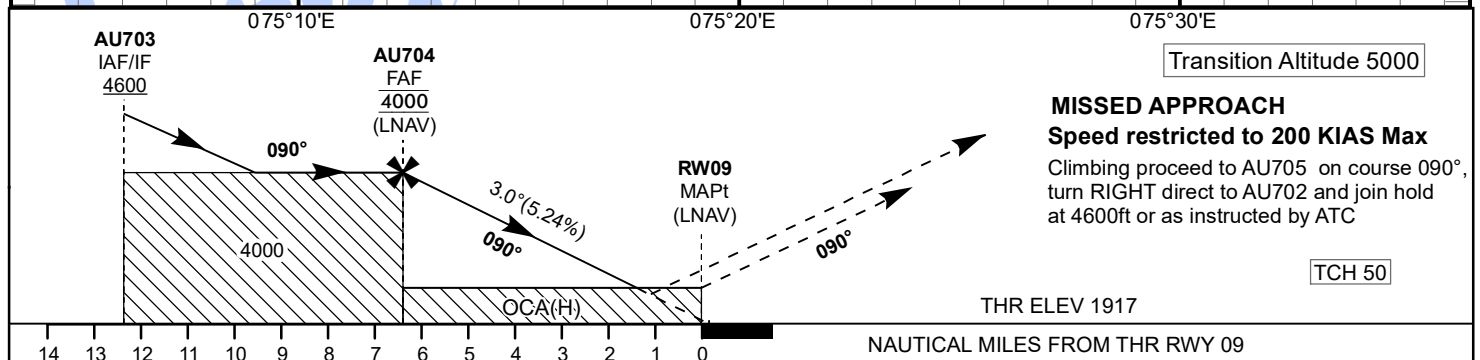
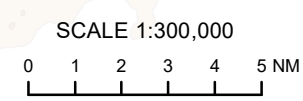
**AERODROME ELEV 1917 ft**  
HEIGHTS RELATED TO  
THR RWY 09 - ELEV 1917 ft

**TWR 122.300/118.350**  
**APP 122.300/118.350**

**AURANGABAD(VAAU)**  
INDIA  
**RNP Y RWY 09**



Simultaneous holding at same level over AU703 and AU702 is not permitted



| OCA(H)        |           | Distance/Altitude Information              |        |          |      |      |      |      |      |
|---------------|-----------|--|--------|----------|------|------|------|------|------|
| Acat Category | A/B/C/D   | Distance to RWY09                          | NM     | 6.4(FAF) | 6    | 5    | 4    | 3    | 2    |
| LNAV/VNAV     | 2320(403) | Altitude                                   | Ft     | 4000     | 3880 | 3560 | 3250 | 2930 | 2610 |
| LNAV          | 2410(493) | Ground Speed / Rate of Descent Information |        |          |      |      |      |      |      |
|               |           | Ground Speed                               | Kt     | 80       | 100  | 120  | 140  | 160  | 180  |
|               |           | Rate of Descent (5.24%)                    | Ft/Min | 425      | 530  | 635  | 745  | 850  | 955  |