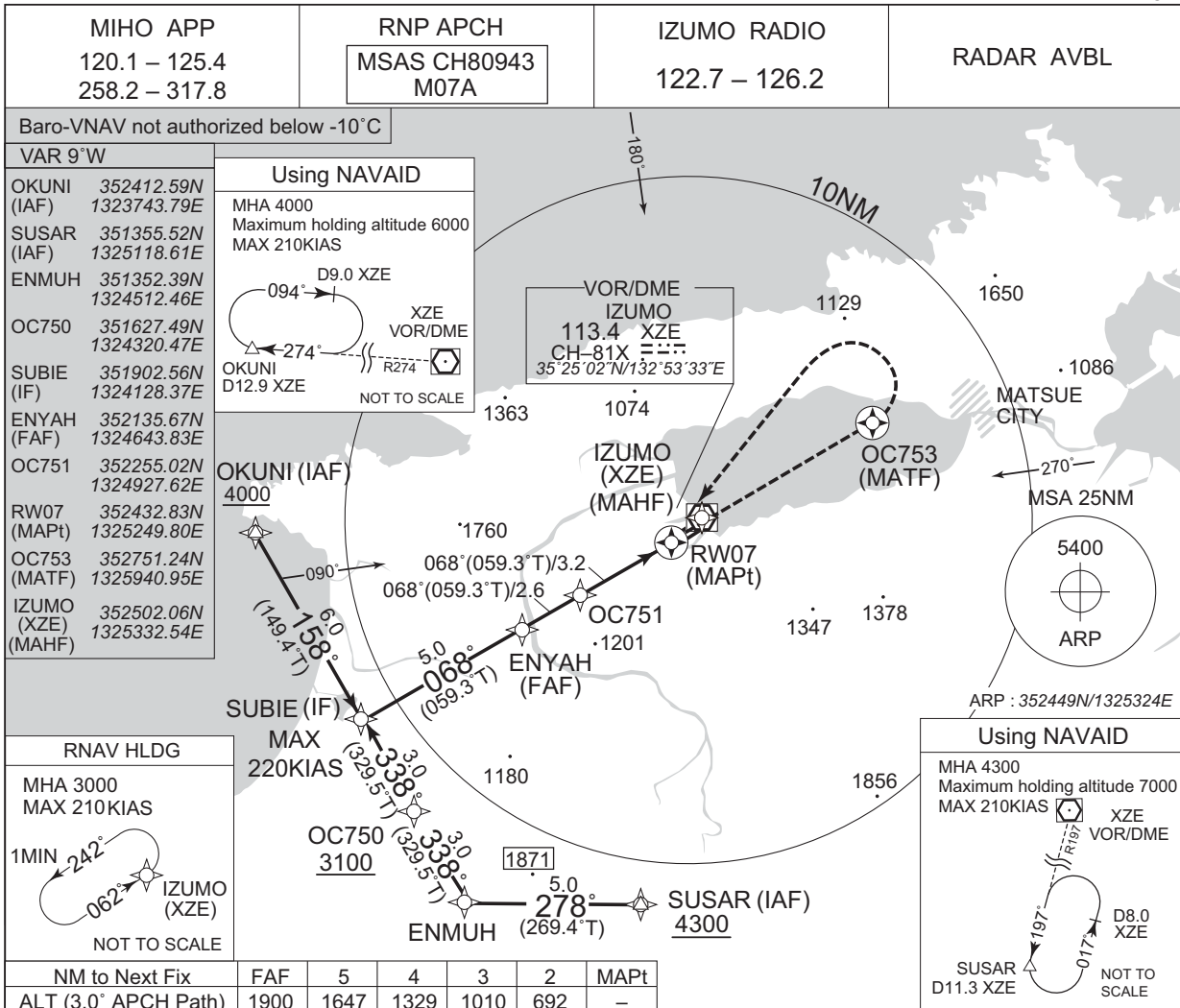


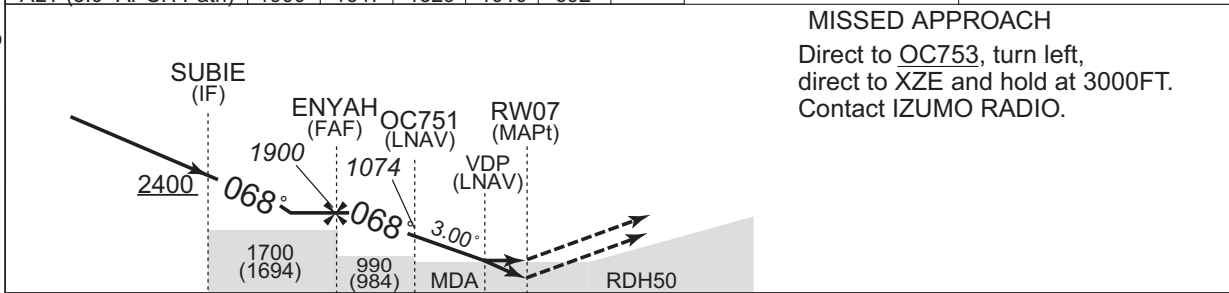
INSTRUMENT APPROACH CHART

RJOC / IZUMO

RNP RWY07



CHANGE : PROC course. Missed APCH for using VOR/DME abolished. MSAS CH added. VAR. NM to THR for VDP. Missed APCH climb gradient MNM established. MINIMA.



Missed APCH climb gradient MNM 5.0%

CAT	LPV		LNAV/VNAV		LNAV		CIRCLING		
	DA(H)	CMV	DA(H)	CMV	MDA(H)	CMV	MDA(H)	VIS	
A	256 (250)	1500	349 (343)	1500	480 (474)	1500	2000	480 (474)	1600
B								560 (554)	2400
C								630 (624)	3200
D									

Circling to NORTH side of RWY only.  
 MINIMA with Missed APCH climb gradient of 2.5% are not established.

INSTRUMENT APPROACH CHART

RJOC / IZUMO

RNP RWY07

**FAS DATA BLOCK**

Operation type	0	LTP/FTP ellipsoidal height	+00360
SBAS service provider identifier	2	FPAP latitude	352505.7945N
Airport identifier	RJOC	FPAP longitude	1325358.0770E
Runway	07	Threshold crossing height	00015.0
Approach performance designator	0	TCH units selector	1
Route indicator		Glide path angle	03.00
Reference path data selector	0	Course width at threshold	105.00
Reference path ID	M07A	∠ length offset	0000
LTP/FTP latitude	352432.8070N	HAL	40.0
LTP/FTP longitude	1325249.8095E	VAL	50.0
CRC remainder	30102B24		

**Required additional data**

LTP/FTP orthometric height	1.4
----------------------------	-----

CHANGE : FAS DATA BLOCK, Required additional data established.