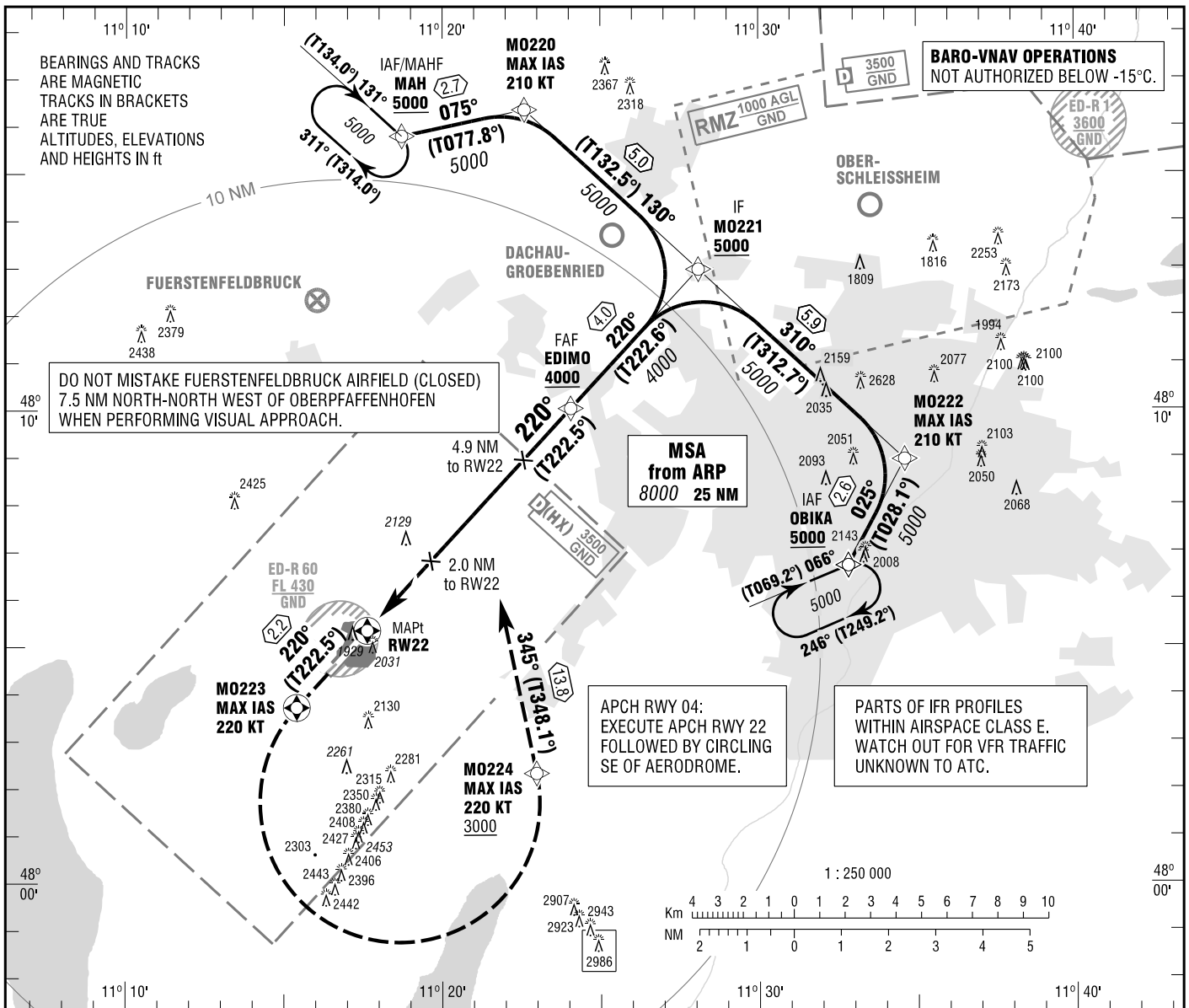


INSTRUMENT  
APPROACH  
CHART - ICAO

VAR 3° E  
ELEV 1947  
OCH RELATED TO  
THR 22 ELEV 1890

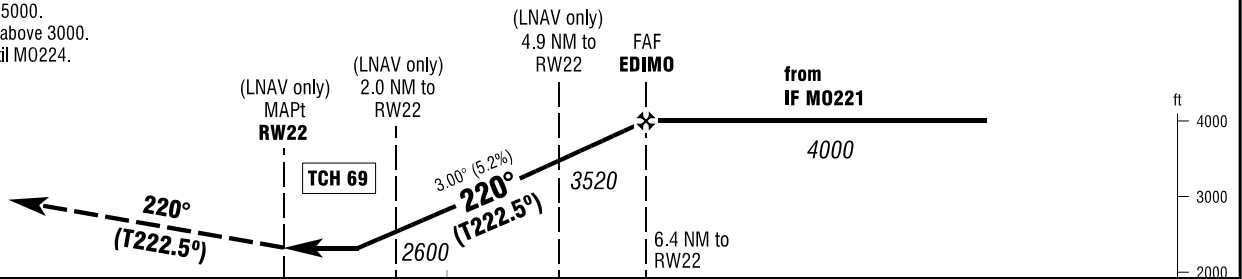
OBERPFAFFENHOFEN ATIS 126.580  
MUENCHEN RADAR 127.955 (S)  
MUENCHEN ARRIVAL 120.780 (S)  
OBERPFAFFENHOFEN TOWER 119.555

OBERPFAFFENHOFEN  
RNP RWY 22  
EGNOS CH 88806 E22A



**MISSED APPROACH PROCEDURE**

On course 220° to M0223;  
LT, direct to M0224;  
to MAH climbing to 5000.  
Cross M0224 at or above 3000.  
Max. IAS 220KT until M0224.



1947 1890 PROFILE SCALE 1 : 250 000  
NM 6 5 4 3 2 1 0 1 2 3 4 5 6 7 8 9 10 11 12 13 14 NM

OCA (OCH)	A	B	C	D
LNAV	2310 (410)	2310 (410)	2310 (410)	2310 (410)
LNAV / VNAV	2163 (273)	2173 (283)	2183 (293)	2192 (302)
LPV	2140 (250)	2140 (250)	2140 (250)	2140 (250)
CIRCLING* OCH RELATED TO AD ELEV	2490 (550)	2560 (610)	2850 (900)	2850 (900)

DIST THR / RW22	2	3	4	5	6
ALTITUDE	2600	2920	3240	3560	3870

Timing not authorized for defining the MAPt.

GS	kt	80	100	120	140	160	180
EDIMO - RW22 (6.4 NM)	MIN:SEC	4:48	3:50	3:12	2:45	2:24	2:08
Rate of descent (5.2%)	ft / MIN	420	530	630	740	840	950

MMN GROUND VISIBILITY REQUIRED 1500m. \*SOUTH-EAST OF AERODROME ONLY.

Correction: Communications, obstacles & OCA(H) obstacles & highest obstacle revised.