

APP CRS	Rwy Idg	<b>10000</b>
<b>057°</b>	TDZE	<b>1103</b>
	Apt Elev	<b>1159</b>

# RNAV (GPS) Y RWY 6

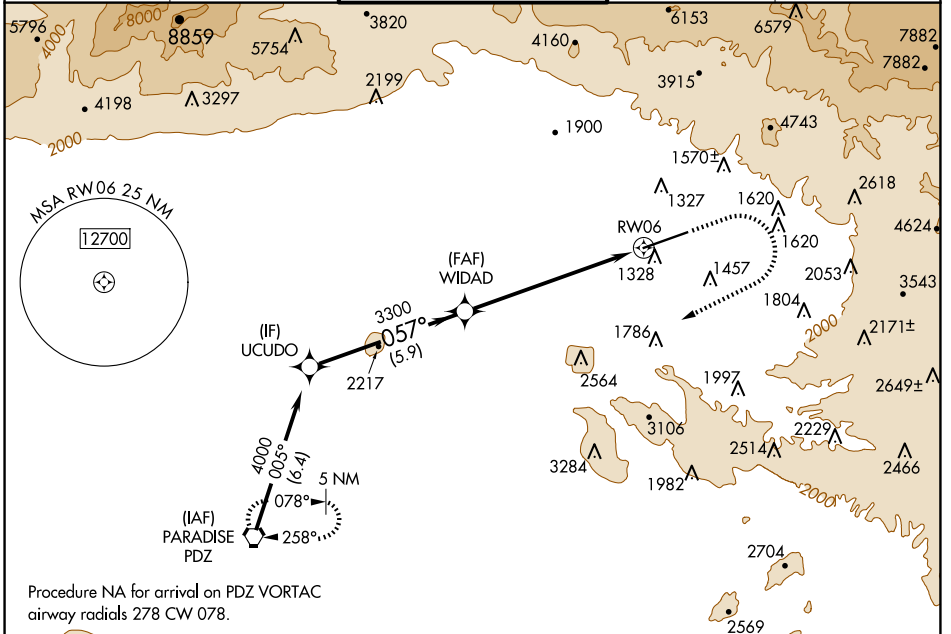
SAN BERNARDINO INTL (SBD)

RNP APCH

**▼** Circling NA northwest of Rwy 6-24. When local altimeter setting not received, use Ontario altimeter setting and increase all MDA 80 feet.

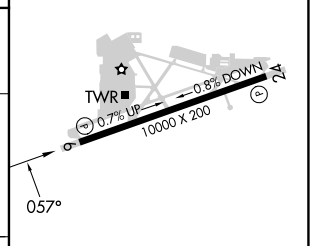
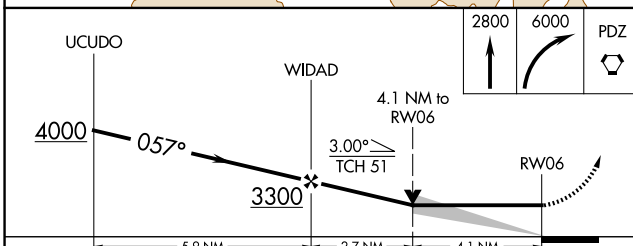
**▲** MISSED APPROACH: Climb to 2800 then climbing right turn to 6000 direct PDZ VORTAC and hold, continue climb-in-hold to 6000.

D-ATIS <b>124.175</b>	SOCAL APP CON <b>127.0 318.2</b>	SAN BERNARDINO TOWER* <b>119.45 (CTAF) 0</b>	GND CON <b>121.8</b>	UNICOM <b>122.975</b>
--------------------------	-------------------------------------	---	-------------------------	--------------------------



Procedure NA for arrival on PDZ VORTAC  
airway radials 278 CW 078.

ELEV 1159	<b>D</b> TDZE 1103
-----------	--------------------



CATEGORY	A	B	C	D
LNVA MDA	2460-1¼ 1357 (1400-1¼)	2460-1½ 1357 (1400-1½)	2460-3 1357 (1400-3)	2640-3
<b>C</b> CIRCLING	2460-1¼ 1301 (1400-1¼)	2460-1½ 1301 (1400-1½)	2460-3 1301 (1400-3)	2640-3 1481 (1500-3)

HIRL Rwy 6-24 **0**  
REIL Rws 6 and 24 **0**

SW-3, 20 MAR 2025 to 17 APR 2025

SW-3, 20 MAR 2025 to 17 APR 2025