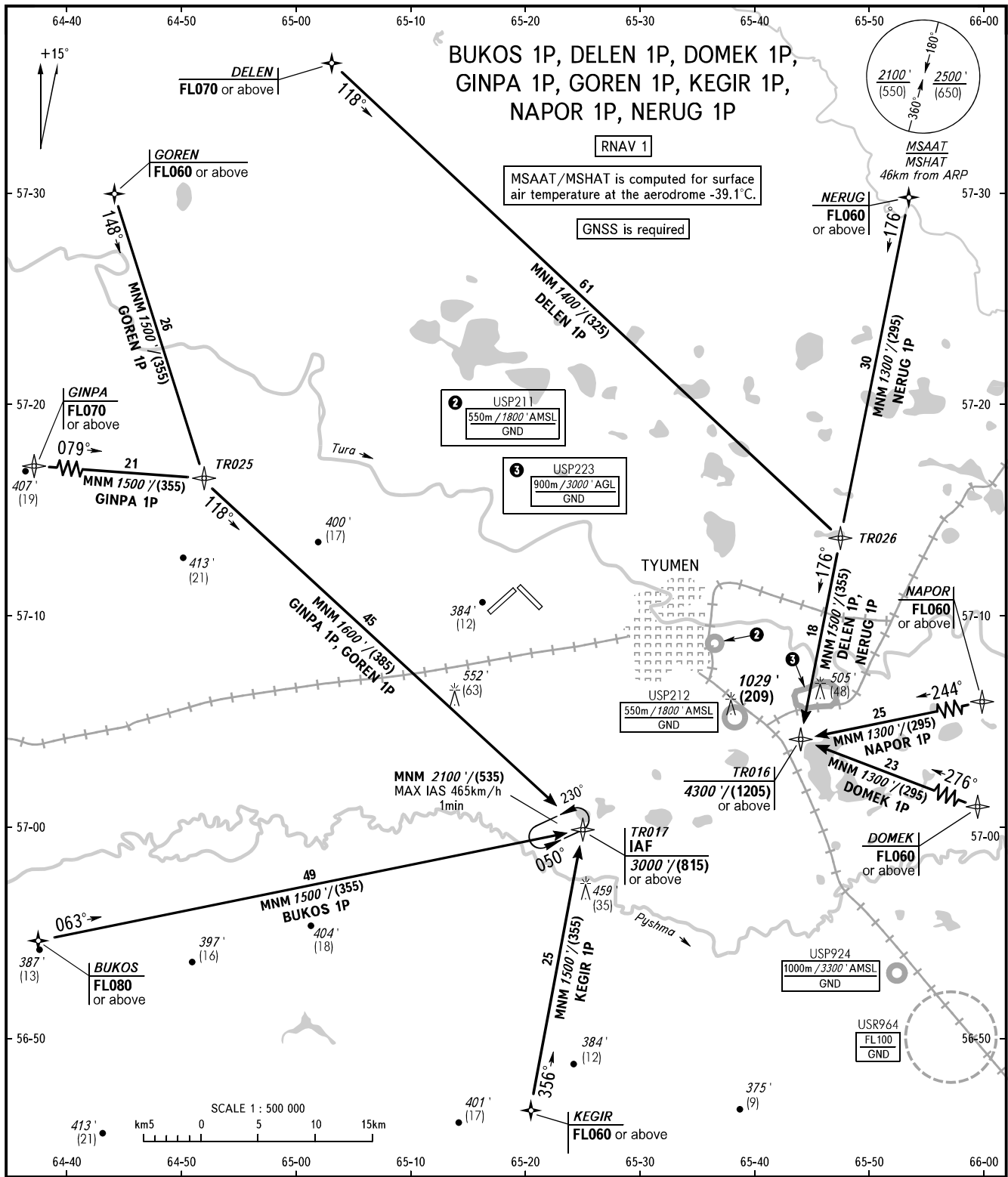


**TYUMEN, RUSSIA**  
ROSHCHINO  
RNAV RWY 30

**STANDARD ARRIVAL CHART**  
INSTRUMENT (STAR) - ICAO

TRANSITION  
LEVEL: **1**



RADAR	126.100
START	118.200
BEARINGS AND TRACKS ARE MAGNETIC ALTITUDES IN FEET HEIGHTS IN METRES ELEVATION IN FEET AND METRES DISTANCES IN KILOMETRES	
Alt set: -QNH(QFE on req); -hPa(mm on req).	

**1** TRANSITION LEVEL:  
 - FL040 when QNH is 1013 hPa (760mm mercury column) or above;  
 - FL050 when QNH is 977 hPa (733mm mercury column) or above,  
 but less than 1013 hPa (760mm mercury column);  
 - FL060 when QNH is less than 977 hPa (733mm mercury column).

CHANGE: MSAAT/MSHAT, USP