

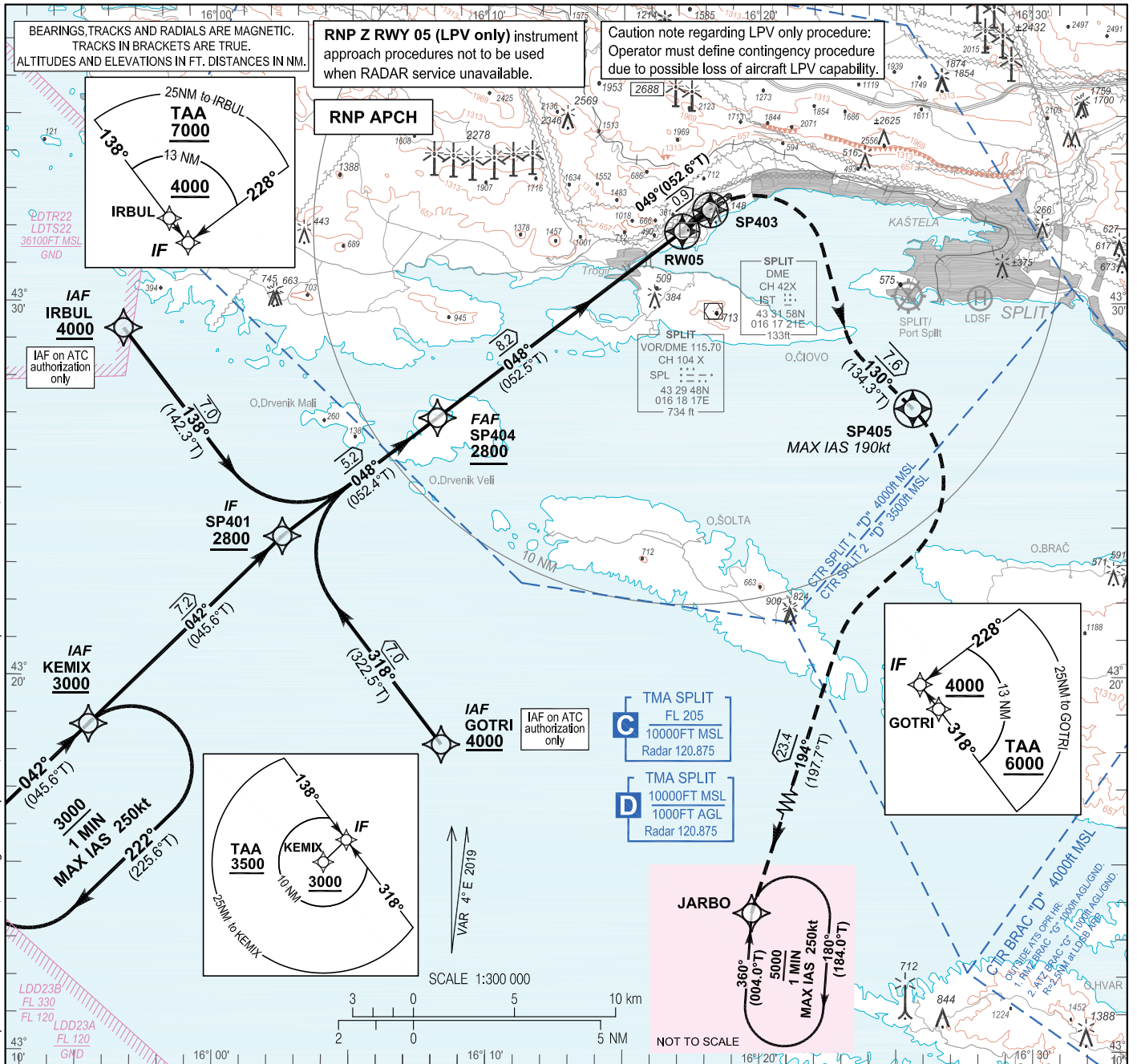
INSTRUMENT APPROACH
CHART-ICAO

AD ELEV 78
HEIGHTS RELATED
TO THR 05 ELEV 70

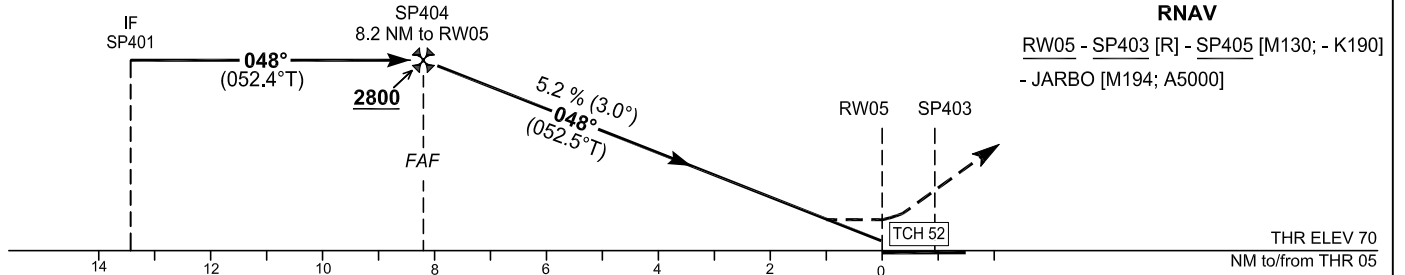
SBAS
CH: 69806
E05A

SPLIT ATIS 125.300
SPLIT RADAR 120.875
SPLIT TOWER 124.675

SPLIT/ Sveti Jeronim (LDSP)
SPLIT/ Saint Jerome (LDSP)
RNP Z RWY 05 (LPV only)



TRANSITION ALT 10 000



MISSED APPROACH
RNAV

RW05 - SP403 [R] - SP405 [M130; - K190]
- JARBO [M194; A5000]

OCA(H)	A	B	C	D	
Straight-in approach	LPV	750 (680)	760 (690)	770 (700)	780 (710)

DIST THR / RW 05	NM	8	7	6	5	4	3	2
Altitude	ft	2670	2360	2040	1720	1400	1080	760

SP404 TO RW05 DISTANCE - 8.2NM						
GS (kt)	80	100	120	140	160	180
min : sec	6:09	4:55	4:06	3:31	3:05	2:44
Rate of descent (ft / min)	425	531	637	743	849	955

NO MAPT ; TIMING NOT AUTHORIZED FOR DEFINING THE RW05

CHANGE: TMA classification vertical limits; KEMIX HLDG and JARBO HLDG speed limitation added; Coding tables updated; Water aerodrome Split / Resnik withdrawn; Editorial

SPLIT/ Sveti Jeronim (LDSP)
SPLIT/ Saint Jerome (LDSP)

RNP Z RWY 05 (LPV only)

Coding elements for FAS Data Block

Input data

Operation Type	0
SBAS Provider	1
Airport Identifier	LDSP
Runway	05
Runway Direction	0
Approach Performance Designator	0
Route Indicator	Z
Reference Path Data Selector	0
Reference Path Identifier	E05A
LTP/FTP Latitude	433155.3885N
LTP/FTP Longitude	0161708.0990E
LTP/FTP Ellipsoidal Height (metres)	63.7
FPAP Latitude	433246.3360N
Delta FPAP Latitude (seconds)	50.9475
FPAP Longitude	0161839.6425E
Delta FPAP Longitude (seconds)	91.5435
Threshold Crossing Height	52.0
TCH Units Selector	0
Glidepath Angle (degrees)	3.00
Course Width (metres)	105.00
Length Offset (metres)	40
HAL (metres)	40.0
VAL (metres)	50.0

Output data

Data Block	10 10 13 04 0C 05 D0 00 01 35 30 05 F9 92 AE 12 06 30 FD 06 7D 16 07 8E 01 2F CB 02 08 02 2C 01 64 05 C8 FA C0 E3 39 4E
Calculated CRC Value	C0E3394E

Required Additional Data

ICAO Code	LD
LTP/FTP Orthometric Height (metres)	21.4
FPAP Orthometric Height (metres)	

CHANGE: TMA classification vertical limits; KEMIX HLDG and JARBO HLDG speed limitation added; Coding tables updated; Water aerodrome Split / Resnik withdrawn; Editorial.

SPLIT/ Sveti Jeronim (LDSP)
SPLIT/ Saint Jerome (LDSP)

RNP Z RWY 05 (LPV only)

LDSP RNP Z RWY 05 (LPV only)

Proposed tabular description for navigation database coding - APPROACH TRANSITION

Serial Number	Fix	Path descriptor	Waypoint name	Flyover	Course °M (°T)	Magnetic Variation	Distance (NM)	Turn direction	Altitude (ft)	Speed (kt)	VPA/TCH (°/ft)	Remarks	NAV SPEC
010	IAF	IF	GOTRI	-	-	4°E	-	-	+4000	-	-	IAF on ATC authorization only	RNP APCH
020	IF	TF	SP401	-	318° (322.5° T)	4°E	7.0	-	+2800	-	-	-	
010	IAF	IF	KEMIX	-	-	4°E	-	-	+3000	-	-	-	RNP APCH
020	IF	TF	SP401	-	042° (045.6° T)	4°E	7.2	-	+2800	-	-	-	
010	IAF	IF	IRBUL	-	-	4°E	-	-	+4000	-	-	IAF on ATC authorization only	RNP APCH
020	IF	TF	SP401	-	138° (142.3° T)	4°E	7.0	-	+2800	-	-	-	

Proposed tabular description for navigation database coding - FINAL TRANSITION

Serial Number	Fix	Path descriptor	Waypoint name	Flyover	Course °M (°T)	Magnetic Variation	Distance (NM)	Turn direction	Altitude (ft)	Speed (kt)	VPA/TCH (°/ft)	Remarks	NAV SPEC
010	IF	IF	SP401	-	-	4°E	-	-	+2800	-	-	-	RNP APCH
020	FAF	TF	SP404	-	048° (052.4°T)	4°E	5.2	-	+2800	-	-	-	
030	-	TF	RW05	Y	048° (052.5°T)	4°E	8.2	-	-	-	3.0 / 52.0	-	
040	TP	CF	SP403	Y	049° (052.6°T)	4°E	0.9	-	-	-	-	-	
050	-	TF	SP405	Y	130° (134.3°T)	4°E	7.6	R	-	-190	-	-	
060	MAHF	TF	JARBO	-	194° (197.7°T)	4°E	23.4	-	5000	-	-	-	
070	MAHF	HM	JARBO	-	360° (004.0°T)	4°E	1 MIN	R	5000	-	-	Holding above 5000 on ATC clearance only	RNAV 1

RNAV HOLDING tabular description

Waypoint name	Path Terminator	Inbound course °M (°T)	Leg time/ distance NM	Turn direction	Minimum altitude (ft)	Maximum altitude (ft)	Speed limit MAX IAS (kt)	Magnetic variation	Remarks	NAV SPEC
KEMIX	HM	042° (045.6°T)	1MIN / -	R	3000	-	250	4°E	-	RNAV 1
JARBO	HM	360° (004.0°T)	1MIN / -	R	5000	-	250	4°E	-	

Waypoint coordinates

Waypoint name	WGS-84 Latitude	WGS-84 Longitude
GOTRI	431811.7N	0160821.4E
IRBUL	432917.5N	0155638.4E
JARBO	430451.0N	0161554.2E
KEMIX	431842.4N	0155526.9E
RW05	433155.39N	0161708.10E
SP401	432344.7N	0160230.4E
SP403	433229.8N	0161809.9E
SP404	432655.2N	0160810.3E
SP405	432711.7N	0162536.2E

CHANGE: TMA classification vertical limits; KEMIX HLDG and JARBO HLDG speed limitation added; Coding tables updated; Water aerodrome Split / Resnik withdrawn; Editorial.

OVA STRANICA JE NAMJERNO OSTAVLJENA PRAZNA
THIS PAGE INTENTIONALLY LEFT BLANK