

STANDARD DEPARTURE
CHART-INSTRUMENT

D-ATIS 127.85
APP01 120.45 (124.75)
APP02 119.125 (124.75)
VAR6.1° W TWR 118.35 (123.65)

ZBSJ SHIJIAZHUANG/Zhengding
RWY33(ADBES/VADKA)

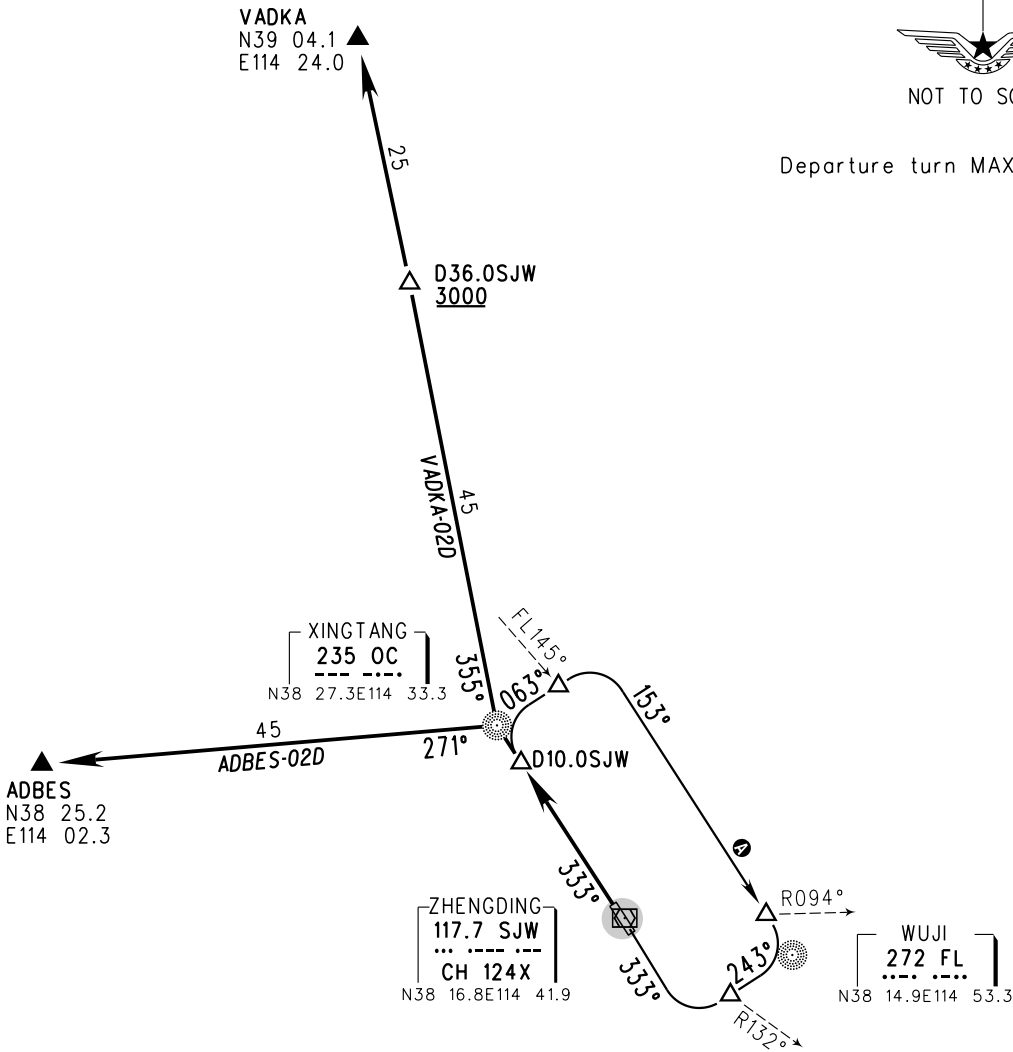
BEARINGS ARE MAGNETIC.
ALTITUDES, ELEVATIONS
AND HEIGHTS IN METERS.
DME DISTANCES IN
NAUTICAL MILES.
DISTANCES IN KM.

This chart used by ATC

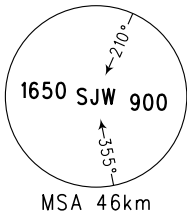
TL 3600
TA 3000
3300(QNH ≥ 1031hPa)
2700(QNH ≤ 979hPa)



Departure turn MAX IAS380km/h



- A** Departure spiral climb procedure:
climb straight after departure, fly to D10.0SJW and turn RIGHT,
along bearing 063° from OC to FL145°, turn RIGHT and
along bearing 153° to FL, fly to R094° SJW and turn RIGHT,
along bearing 243° from FL to R132° SJW and turn RIGHT,
along bearing 333° to OC, fly to D10.0SJW and turn RIGHT,
continue to spiral climb, follow ATC instructions to join in en-route
flight until climbing to ATC designated altitude.



Changes: Note, chart symbol.