

ICAO - INSTRUMENT APPROACH CHART

DOC 8168 ED.5 2006 - AMDT 4

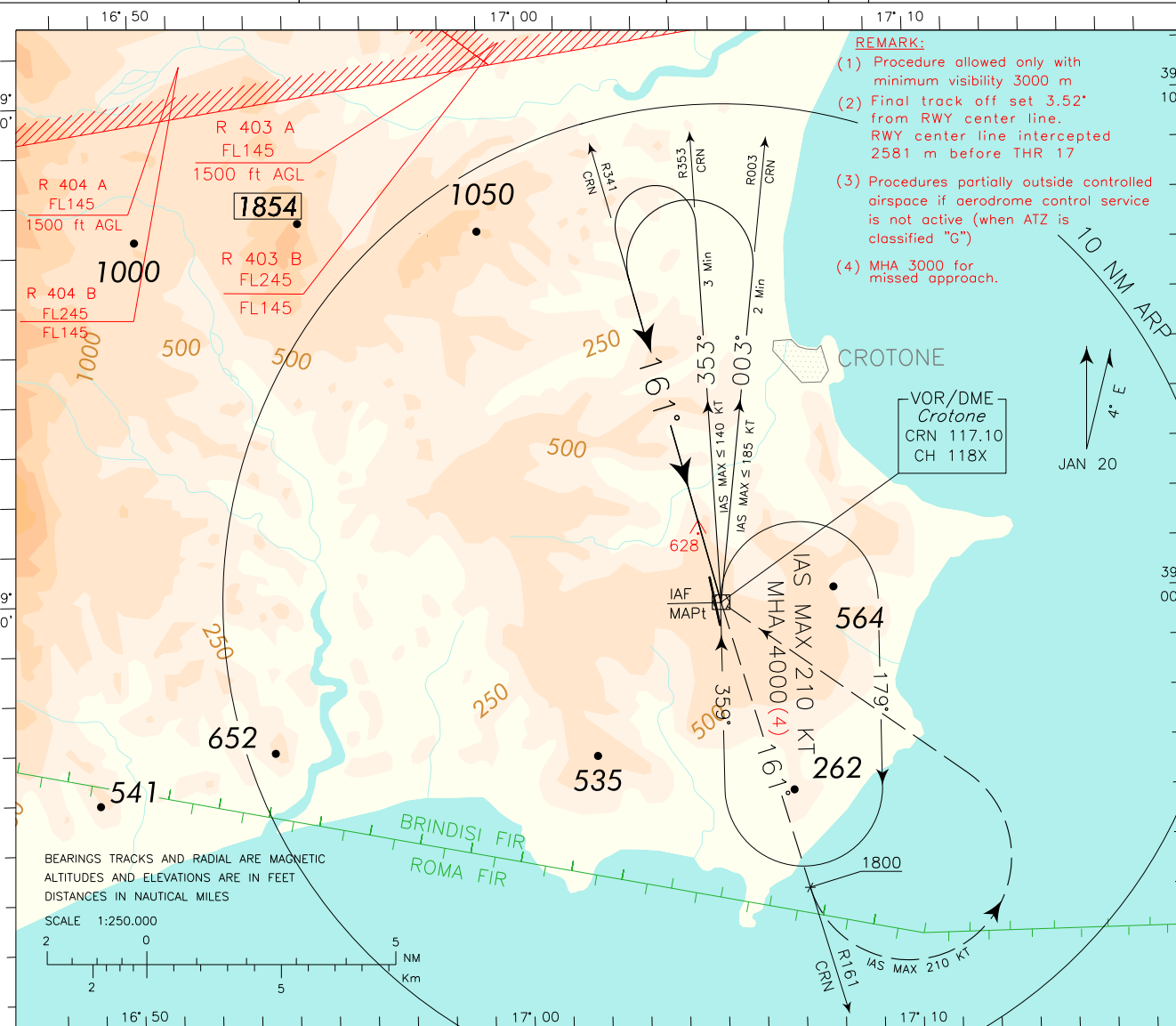
WARNING : Users of this procedure shall assure themselves in every circumstance their safety with regard to other aircraft which may operate near aerodrome.

APP Roma Radar 118.800 (133.250)
 AFIS Crotone Aerodrome INFO CH 119.105

AD ELEV 522

CROTONE
 VOR Y RWY17

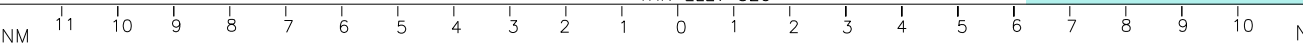
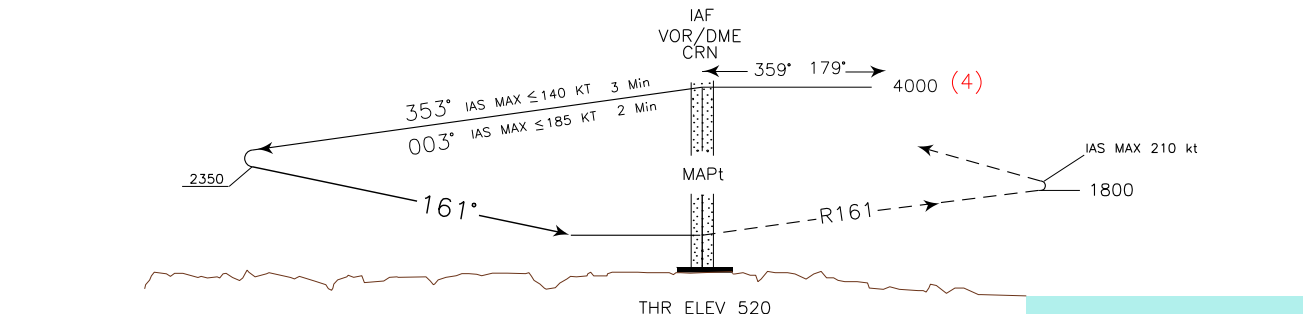
CHANGE: MAG VAR AND BOX FREQ UPDATED



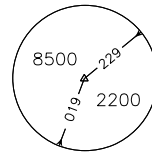
- REMARK:**
- (1) Procedure allowed only with minimum visibility 3000 m
 - (2) Final track off set 3.52' from RWY center line. RWY center line intercepted 2581 m before THR 17
 - (3) Procedures partially outside controlled airspace if aerodrome control service is not active (when ATZ is classified "G")
 - (4) MHA 3000 for missed approach.

TRANSITION ALT 6000

MISSED APPROACH: Over CRN VOR proceed on RDL 161 CRN VOR (track 161°) climbing to 3000 ft, crossing 1800 ft or above, turn left (IAS MAX 210 kt) to CRN VOR holding pattern to be reached at 3000ft.



OCA (OCH)		A	B	C	D	GS	FT PER MIN	MNM	SECT	ALT
STRAIGHT IN APPROACH	VOR	1690 (1168)				80	425		CRN	VOR
		1690 (1168)				100	531			
		1690 (1168)				120	637			
		1690 (1168)				140	743			
CIRCLING		1690 (1168)				160	849			



FIX/POINT	Coordinates (WGS84)
IAF (CRN VOR/DME)	38°59'46.0" N 017°04'59.0" E
MAPt (CRN VOR/DME)	38°59'46.0" N 017°04'59.0" E