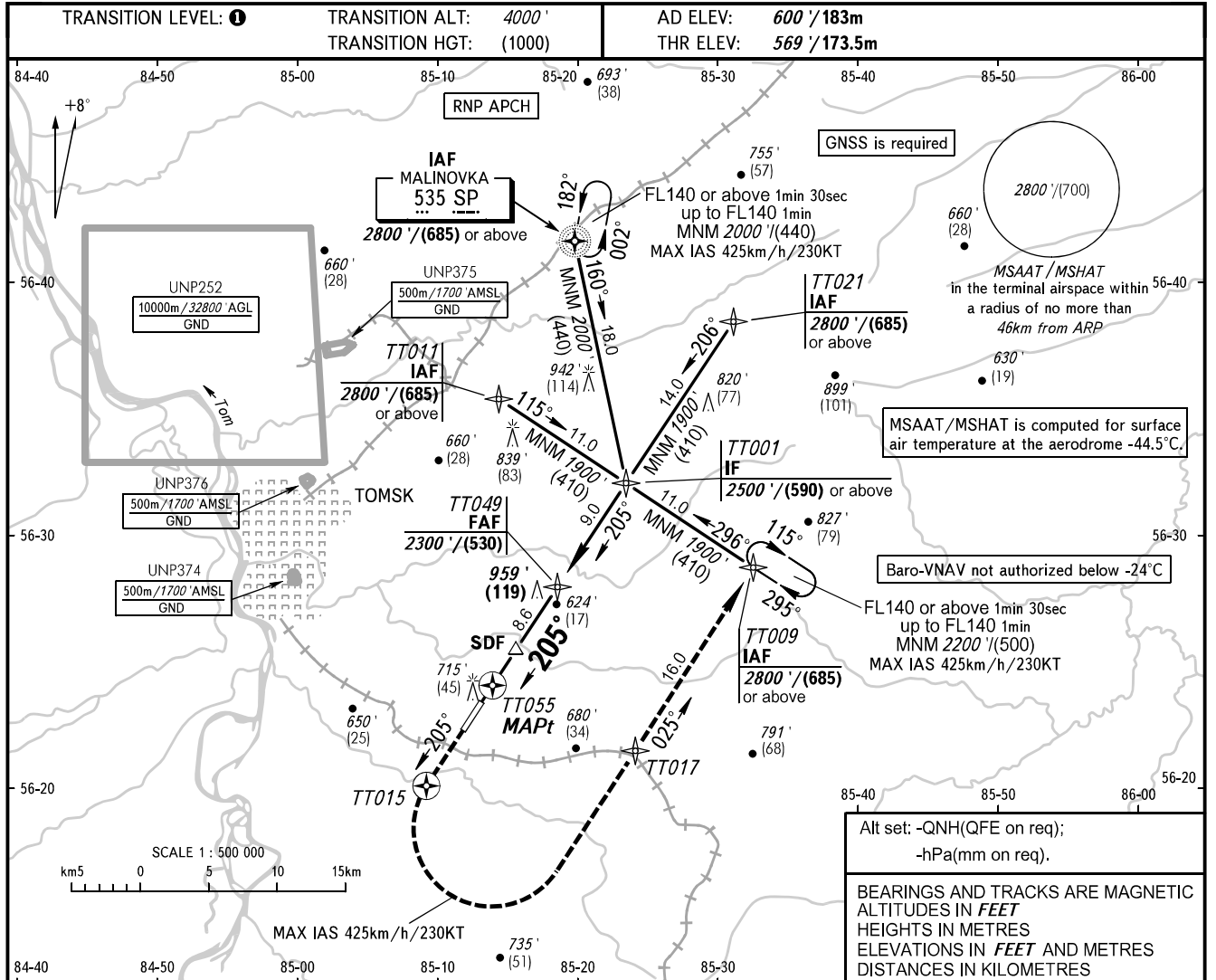


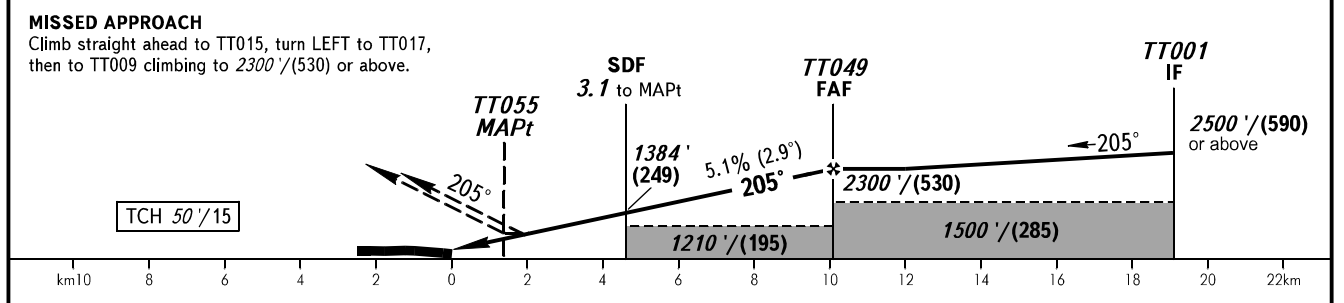
**INSTRUMENT  
APPROACH  
CHART - ICAO**

TOWER 127.300

**TOMSK, RUSSIA**  
BOGASHEVO  
RNP RWY 21



DIST to RWY 21 THR	4.0	6.0	8.0	10.0
ALTITUDE/HEIGHT	1290'/(220)	1620'/(320)	1950'/(420)	2290'/(525)



OCA(H)		A	B	C	D	<b>1</b> TRANSITION LEVEL: - FL050 when QNH is 1013 hPa (760mm mercury column) or above; - FL060 when QNH is 977 hPa (733mm mercury column) or above, but less than 1013 hPa (760mm mercury column); - FL070 when QNH is less than 977 hPa (733mm mercury column).  <b>WARNING</b> MAPt at TT055. Timing not authorized for defining MAPt.					
Straight-in	<b>LNAV</b>	870' (300') (90)	870' (300') (90)	870' (300') (90)	870' (300') (90)						
	<b>LNAV/VNAV</b>	850' (280') (85)	860' (290') (90)	870' (300') (90)	880' (310') (95)						
Circling		1070' (470') (145)	1100' (500') (155)	1250' (650') (200)	1360' (760') (235)						
GROUND SPEED	km/h		150	180	210	240	270	300	330	360	390
	kt		81	97	113	130	146	162	178	194	211
RATE OF DESCENT	m/s		2.1	2.6	3.0	3.4	3.8	4.3	4.7	5.1	5.5
	ft/min		418	502	586	669	753	837	920	1004	1088