

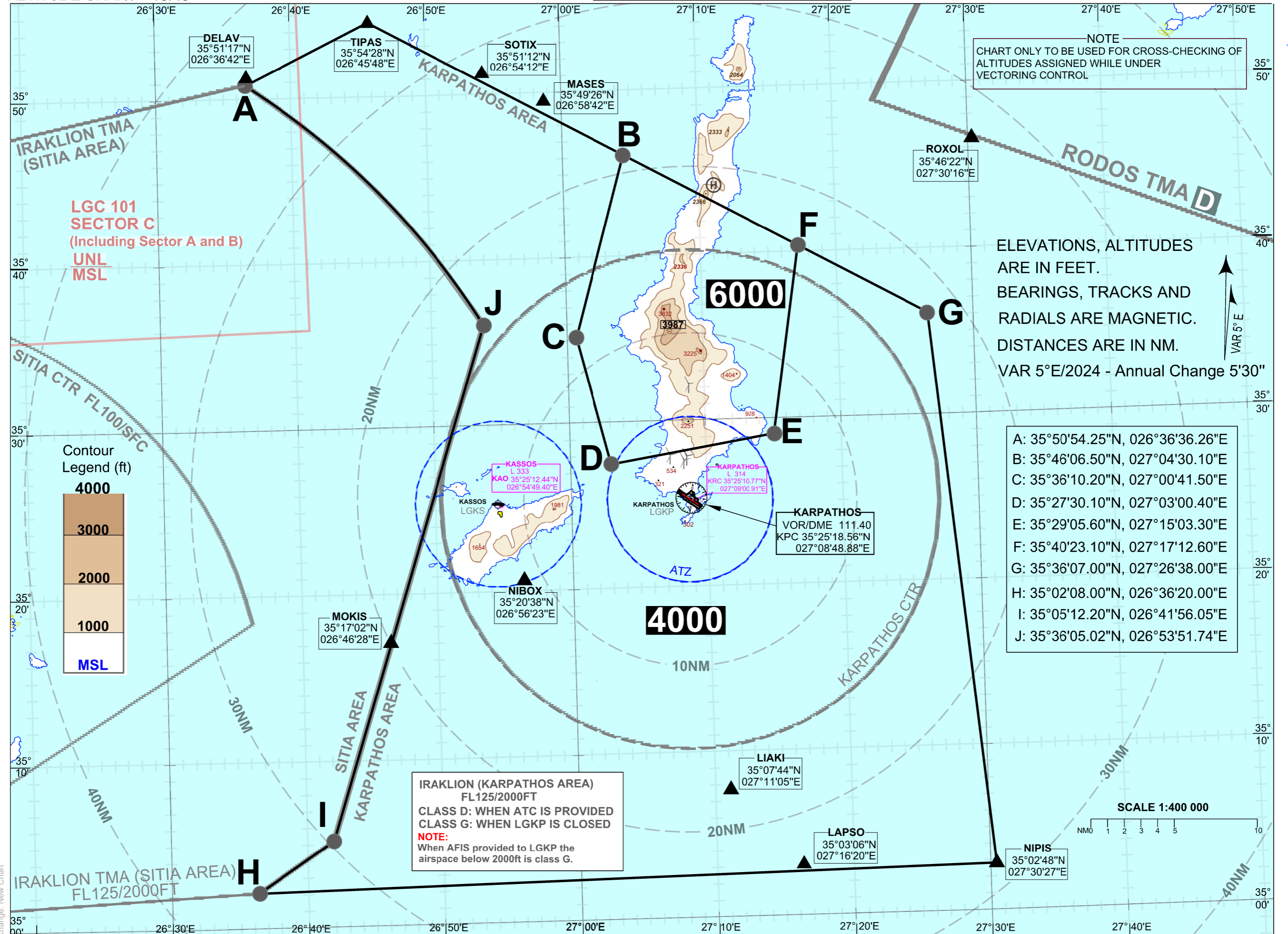
ATC SURVEILLANCE MINIMUM ALTITUDE CHART - ICAO

TRANSITION ALT 6000 FT

IRAKLION APPROACH: 123.975, 118.025
KARPATOS INFORMATION: 123.200

AERODROME ELEV 66 FT

KARPATOS IRAKLION TMA (KARPATOS AREA)



NOTE
CHART ONLY TO BE USED FOR CROSS-CHECKING OF
ALTITUDES ASSIGNED WHILE UNDER
VECTORIZING CONTROL

ELEVATIONS, ALTITUDES
ARE IN FEET.
BEARINGS, TRACKS AND
RADIALS ARE MAGNETIC.
DISTANCES ARE IN NM.
VAR 5°E/2024 - Annual Change 5'30"

- A: 35°50'54.25"N, 026°36'36.26"E
- B: 35°46'06.50"N, 027°04'30.10"E
- C: 35°36'10.20"N, 027°00'41.50"E
- D: 35°27'30.10"N, 027°03'00.40"E
- E: 35°29'05.60"N, 027°15'03.30"E
- F: 35°40'23.10"N, 027°17'12.60"E
- G: 35°36'07.00"N, 027°26'38.00"E
- H: 35°02'08.00"N, 026°36'20.00"E
- I: 35°05'12.20"N, 026°41'56.05"E
- J: 35°36'05.02"N, 026°53'51.74"E

IRAKLION (KARPATOS AREA)
FL125/2000FT
CLASS D: WHEN ATC IS PROVIDED
CLASS G: WHEN LGKP IS CLOSED
NOTE:
When AFIS provided to LGKP the
airspace below 2000ft is class G.

Change: New Chart