

KRUMM ONE DEPARTURE

LONE STAR DEP CON
118.55 290.35
D-ATIS
120.15
CLNC DEL
127.9
CPDLC
GND CON
121.75 348.6
LOVE TOWER
123.7 239.3

**TOP ALTITUDE:
5000**

NOTE: This DP is to be used only upon assignment by Love Tower normally between 2100-0600 LCL time.
NOTE: WILL ROGERS Transition: For all aircraft inbound to the Oklahoma City area or overflying IRW VORTAC.
NOTE: TULSA Transition: For all aircraft overflying TUL VORTAC.
NOTE: OKMULGEE Transition: For all aircraft overflying OKM VOR/DME proceeding on J181 BDF VORTAC proceeding to destinations in the Chicago Terminal area and north.

DME and RADAR required.

TULSA
114.4 TUL Chan 91

OKMULGEE
114.9 OKM Chan 96

WILL ROGERS
114.1 IRW Chan 88

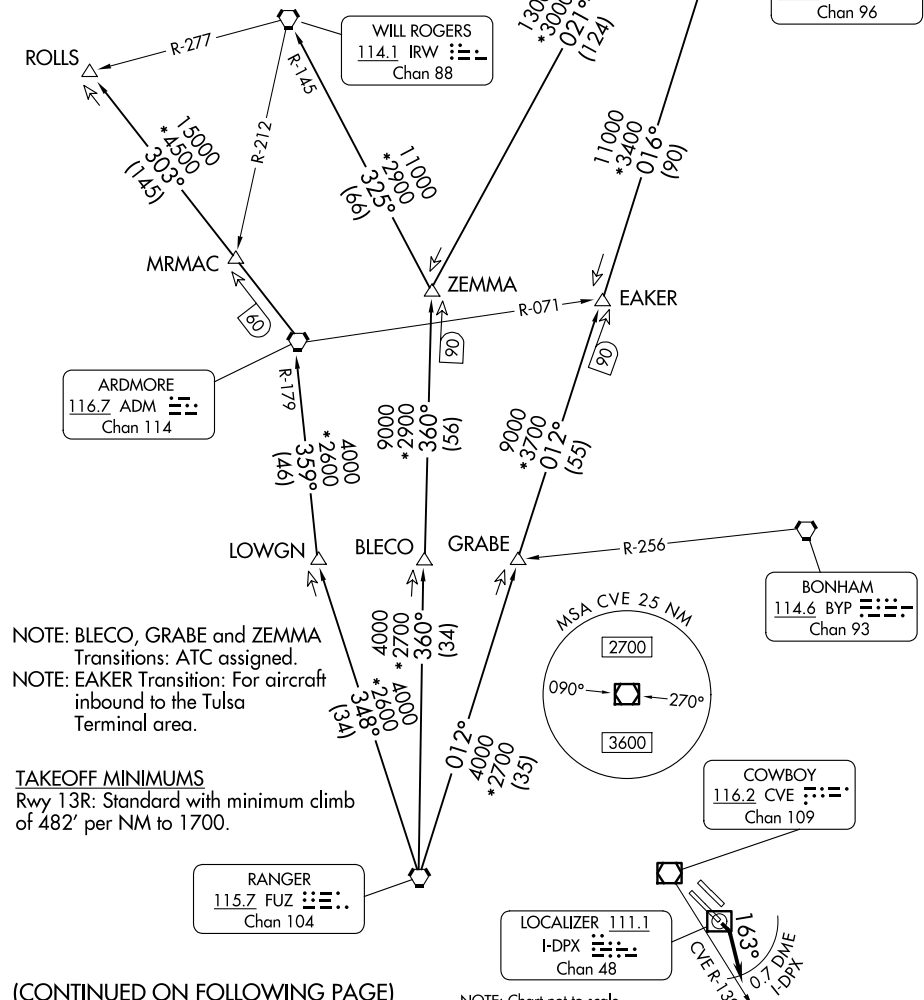
ARDMORE
116.7 ADM Chan 114

BONHAM
114.6 BYP Chan 93

COWBOY
116.2 CVE Chan 109

RANGER
115.7 FUZ Chan 104

LOCALIZER 111.1
I-DPX Chan 48



SC-2, 20 MAR 2025 to 17 APR 2025

SC-2, 20 MAR 2025 to 17 APR 2025

(CONTINUED ON FOLLOWING PAGE)

NOTE: Chart not to scale.

KRUMM ONE DEPARTURE