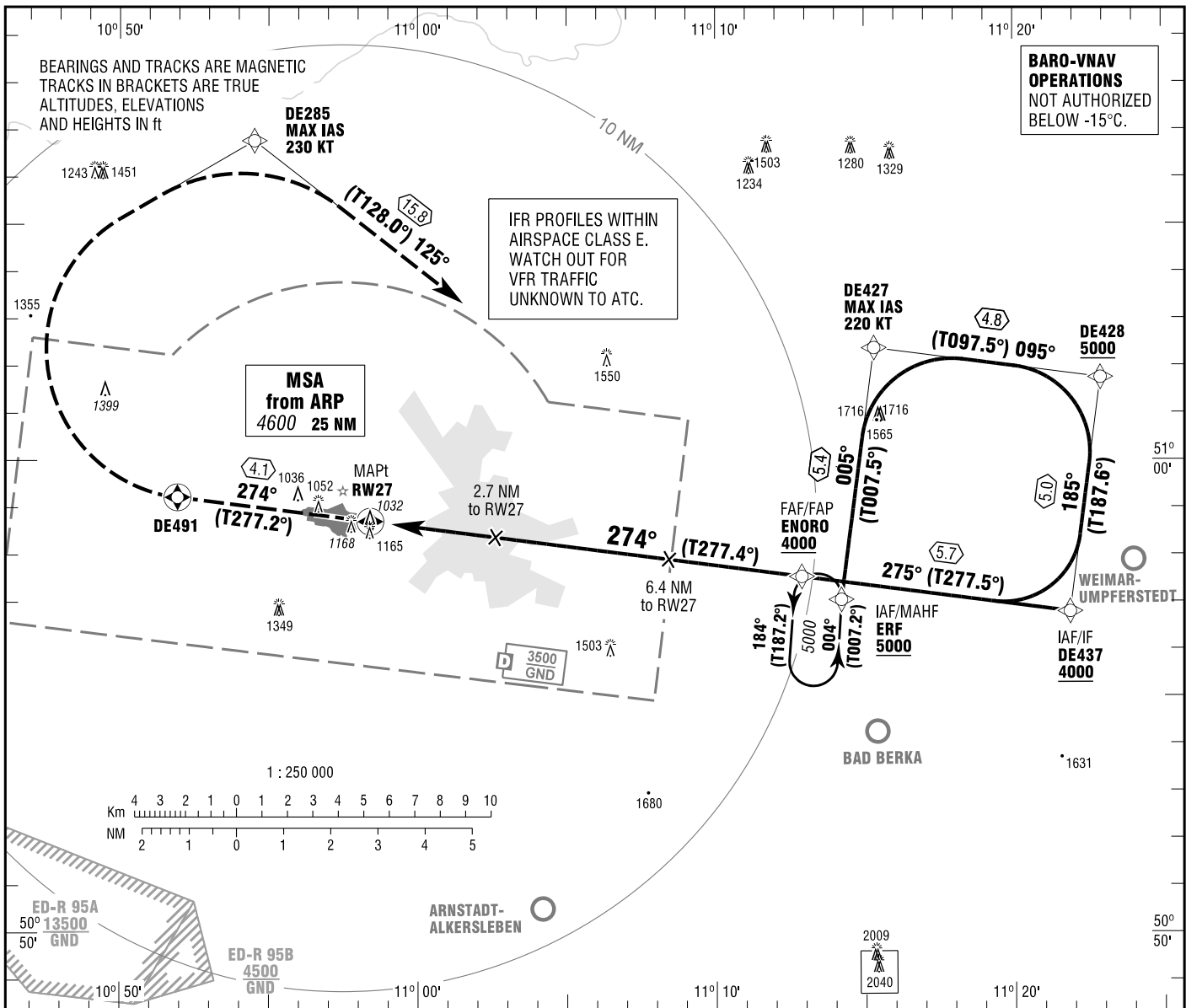


**INSTRUMENT  
APPROACH  
CHART - ICAO**

VAR 3° E  
ELEV 1034  
OCH RELATED TO  
THR 27 ELEV 1014

ERFURT ATIS 133.455 ERFURT GROUND 121.755  
MUNCHEN RADAR 126.175 ERFURT APRON 121.905  
ERFURT TOWER 121.155

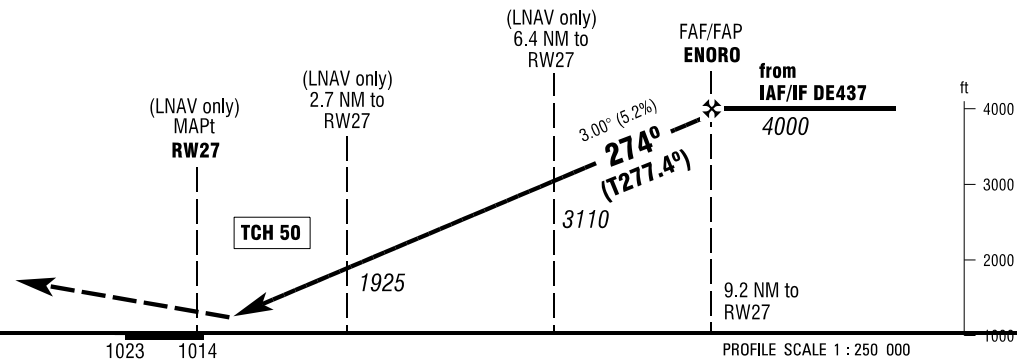
**ERFURT-WEIMAR  
RNP RWY 27  
EGNOS CH 99056 E27A**



**BARO-VNAV  
OPERATIONS  
NOT AUTHORIZED  
BELOW -15°C.**

**MISSED APPROACH PROCEDURE**

Direct to DE491; RT direct  
to DE285; to ERF.  
MAX IAS 230 KT until DE 285.  
Cross ERF at 5000.



OCA (OCH)	A	B	C	D
LNAV	1420 (400)	1420 (400)	1420 (400)	1420 (400)
LNAV / VNAV	1300 (284)	1310 (294)	1320 (304)	1329 (313)
LPV	1164 (148)	1174 (158)	1184 (168)	1193 (177)
CIRCLING * OCH RELATED TO AD ELEV	1590 (560)	1660 (620)	1760 (720)	1800 (760)

DIST THR / RW27	2	3	4	5	6	7	8	9
ALTITUDE	1705	2023	2340	2657	2975	3293	3611	3930

Timing not authorized for defining the MAPt.

GS	kt	80	100	120	140	160	180
ENORO - THR (9.2 NM)	MIN:SEC	6:55	5:32	4:37	3:57	3:27	3:04
Rate of descent (5.2%)	ft / MIN	420	530	640	740	850	950

Correction: Page number, RWY designator, THR elevation, OCA(H)-values & -obstacles, MSA, procedure.