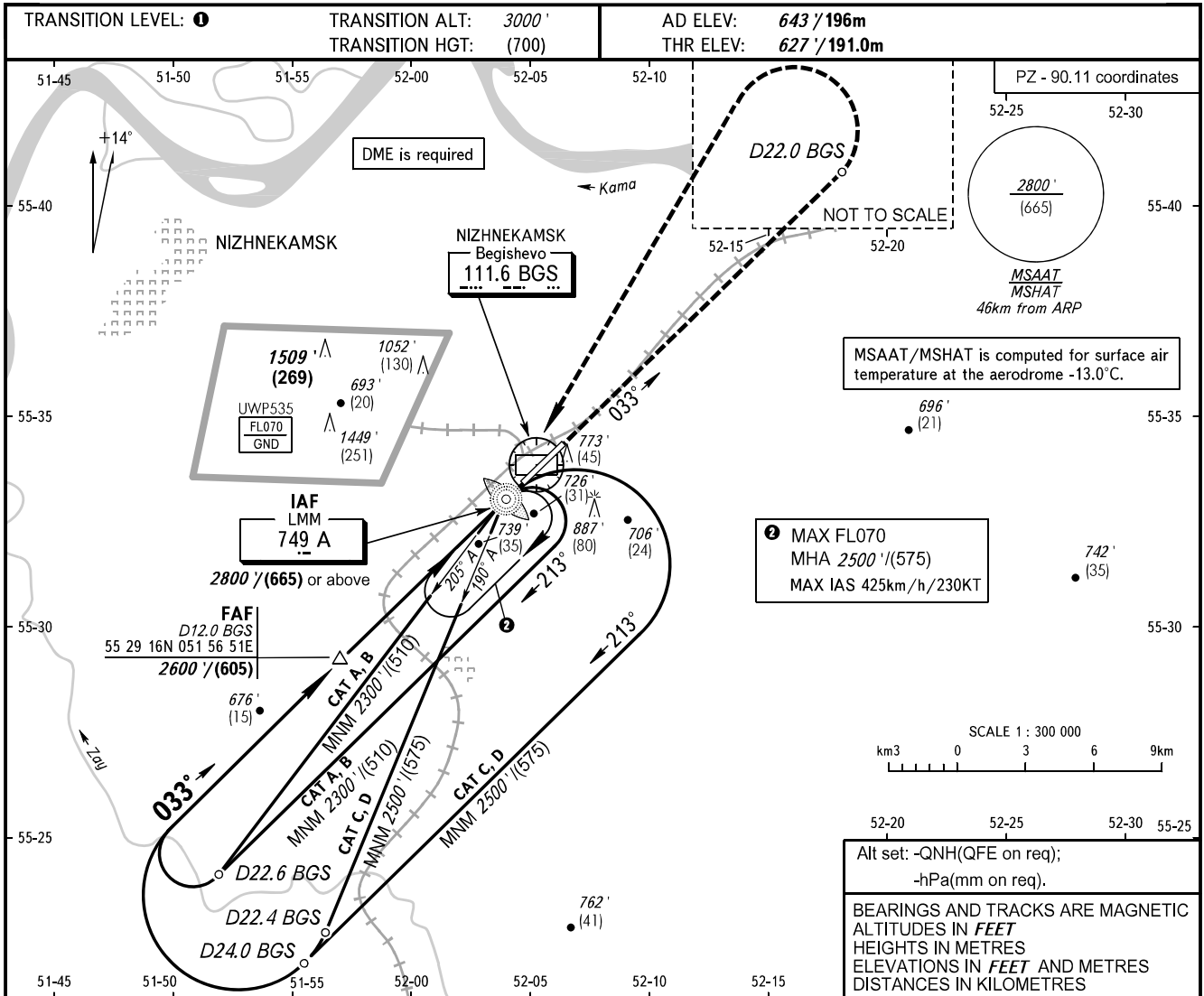


**INSTRUMENT
APPROACH
CHART - ICAO**

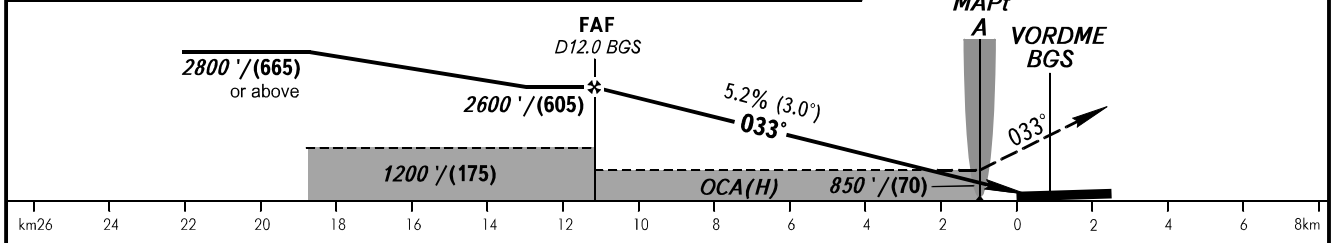
RADAR	127.900
TOWER	127.900
START	121.200

NIZHNEKAMSK, RUSSIA
BEGISHEVO
NDB Z RWY 03



DIST to THR RWY 03	10.0	8.0	6.0	4.0	2.0
DME BGS	10.8	8.8	6.8	4.8	2.8
ALTITUDE	2390' / 730	2050' / 625	1710' / 520	1370' / 415	1030' / 315
HEIGHT	(1760') / (535)	(1420') / (435)	(1080') / (330)	(740') / (225)	(400') / (120)

MISSED APPROACH
Climb straight ahead to D22.0 BGS, then turn LEFT to LMM A climbing to 2800' / (665) or above, then join holding area or according to chart.



OCA(H)		A	B	C	D							
Straight-in Approach		990' (360')	990' (360')	990' (360')	990' (360')							
		300 (110)	300 (110)	300 (110)	300 (110)							
Circling		1070' (430')	1190' (540')	1290' (640')	1340' (690')							
		330 (130)	365 (165)	395 (195)	410 (210)							
GROUND SPEED	km/h	150	180	210	240	270	300	330	360	390	420	450
	kt	81	97	113	130	146	162	178	194	211	227	243
RATE OF DESCENT	m/s	2.2	2.6	3.0	3.5	3.9	4.3	4.8	5.2	5.6	6.1	6.5
	ft/min	427	512	597	682	768	853	938	1024	1109	1194	1280

TRANSITION LEVEL:

- FLO40 when QNH is 1013 hPa (760mm mercury column) or above;
- FLO50 when QNH is 977 hPa (733mm mercury column) or above, but less than 1013 hPa (760mm mercury column);
- FLO60 when QNH is less than 977 hPa (733mm mercury column).

1. MAPt at LMM A. Timing not authorized for defining MAPt.
2. Visual manoeuvring in sector 228° - 018° is PROHIBITED.

CHANGE: New chart