

INSTRUMENT APPROACH CHART

RJFE / FUKUE

VOR RWY03

KOBE CONTROL  
118.9 - 303.8  
134.25 - 315.5

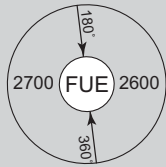
FUKUE VOR/DME  
115.8 FUE  
CH-105X  
32°40'07"N/128°49'36"E

FUKUE RADIO  
118.35  
AFIS provided  
by Fukuoka Airport Office

NO RADAR

VAR 8°W

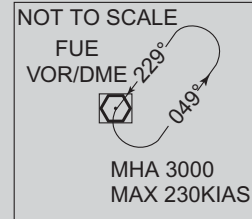
MSA 25NM



EQPT REQUIRED  
DME

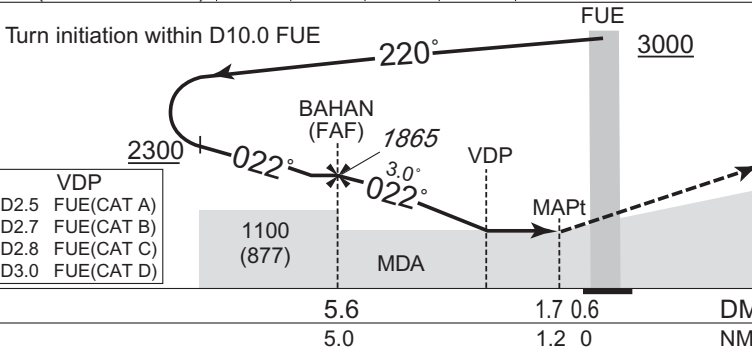


Turn initiation within D10.0 FUE  
MAX Turning speed 200KIAS



BAHAN(FAF) : 323442.89N/1284757.39E

NM to FUE	FAF	5	4	MAPt
ALT(3.0° APCH Path)	1865	1366	1048	-



**MISSED APPROACH**  
Climb to 3000FT via FUE R022,  
turn right, direct to FUE VOR/DME  
and hold.  
Contact FUKUE RADIO.

Timing not authorized for defining the MAPt.

Missed APCH climb gradient MNM 5.0%

MINIMA		THR elev. 223	AD elev. 251		
CAT	CIRCLING				
	MDA(H)	CMV	MDA(H)	VIS	
	A	880 (657)	1200	880 (629)	1600
	B	920 (697)	1400	920 (669)	
C	970 (747)		1280 (1029)	2400	
D	1010 (787)	1800	1810 (1559)	3200	

Circling to WEST side of RWY only.  
MINIMA with Missed APCH climb gradient of 2.5% are not established.

CHANGE : PROC course. HLDG pattern. Missed APCH course. MSA(BTN 180° and 360°). VAR.