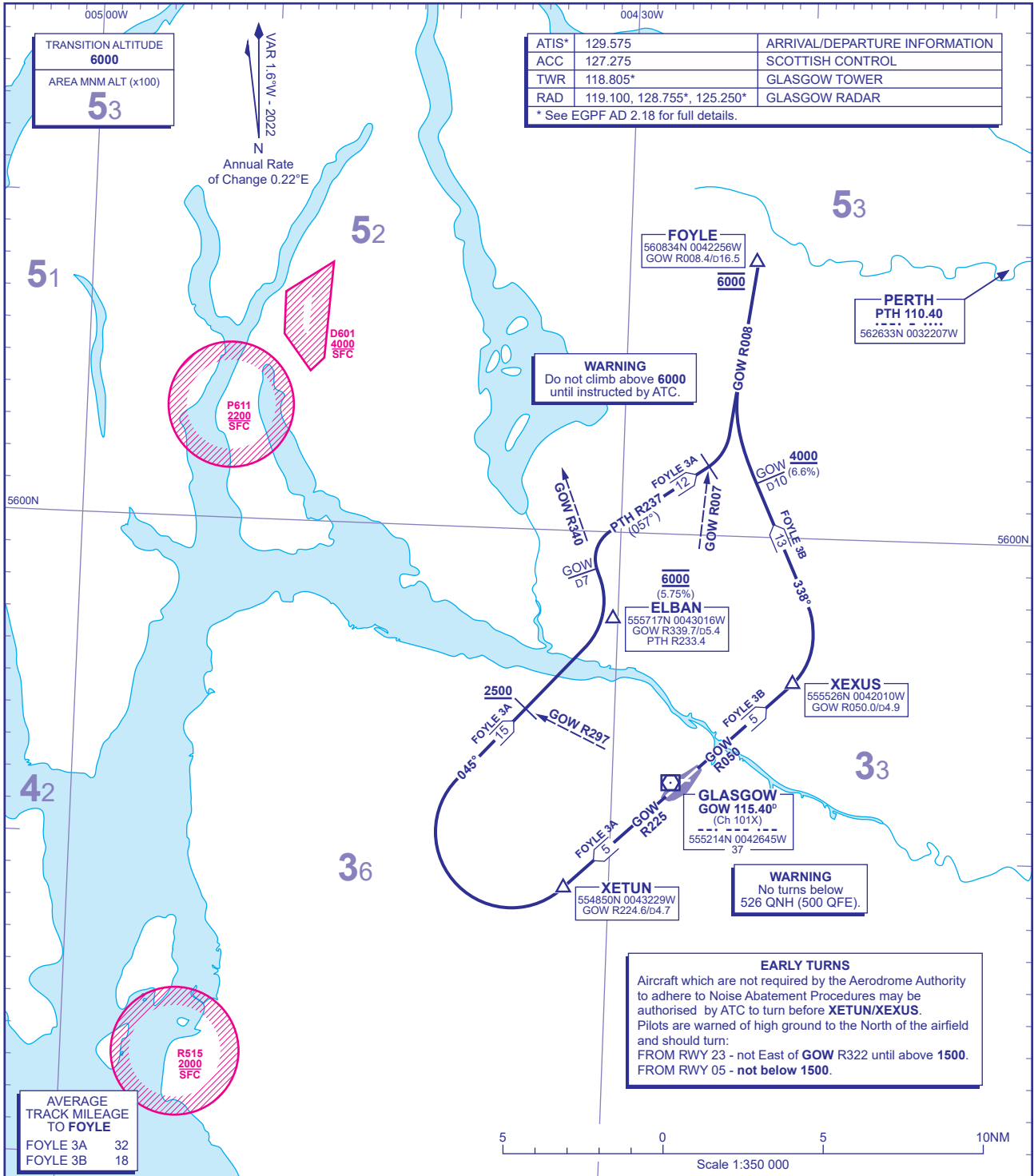


STANDARD DEPARTURE CHART - INSTRUMENT (SID) - ICAO

DISTANCES IN NAUTICAL MILES
BEARINGS, TRACKS AND RADIALS ARE MAGNETIC
ALTITUDES AND ELEVATIONS ARE IN FEET

GLASGOW
FOYLE



TRANSITION ALTITUDE
6000
AREA MNM ALT (x100)
53

VAR 1.6°W - 2022
N
Annual Rate
of Change 0.22°E

ATIS*	129.575	ARRIVAL/DEPARTURE INFORMATION
ACC	127.275	SCOTTISH CONTROL
TWR	118.805*	GLASGOW TOWER
RAD	119.100, 128.755*, 125.250*	GLASGOW RADAR
* See EGPF AD 2.18 for full details.		

AVERAGE TRACK MILEAGE TO FOYLE

FOYLE 3A	32
FOYLE 3B	18

EARLY TURNS
Aircraft which are not required by the Aerodrome Authority to adhere to Noise Abatement Procedures may be authorised by ATC to turn before **XETUN/XEXUS**. Pilots are warned of high ground to the North of the airfield and should turn:
FROM RWY 23 - not East of **GOW R322** until above **1500**.
FROM RWY 05 - not below **1500**.

FOYLE 3A RWY 23 Climb straight ahead to intercept **GOW VOR R225**. At **GOW D4.7 (XETUN)** turn right onto track 045° towards **ELBAN**, crossing **GOW VOR R297** at **2500** or above. Cross **ELBAN** at **6000** (5.75%), intercepting **GOW VOR R340**. At **GOW D7** turn right onto **PTH VOR R237**. At **GOW VOR R007** turn left onto **GOW VOR R008** to **FOYLE** at **6000**. N560, MATIK, NALAN, OSBON, PEMOS.

OBSTACLE CLEARANCE - RWY 23: Maintain minimum 3.8% climb to 2100.

FOYLE 3B RWY 05 Climb straight ahead to intercept **GOW VOR R050**. At **GOW D4.9 (XEXUS)** turn left onto track 338°, crossing **GOW D10** at **4000** or above (6.6%), to intercept **GOW VOR R008** to **FOYLE** at **6000**. N560, MATIK, NALAN, OSBON, PEMOS.

OBSTACLE CLEARANCE - RWY 05: Maintain minimum 4.5% climb to 1500.

GENERAL INFORMATION

- SIDs reflect Noise Abatement Procedures. See EGPF AD 2.21 for Noise Abatement Procedures.
- Climb gradients greater than 3.3% are required for obstacle clearance purposes, as indicated. In addition climb gradients greater than those necessary for obstacle clearance are required for ATC and airspace requirements as indicated.
- En-route cruising levels will be issued after take-off by 'Scottish Control'. Report callsign, SID designator, current altitude and cleared altitude on first contact with 'Scottish Control'.
- Maximum 250KIAS below FL100 unless otherwise authorised.
- Expect first CPDLC Data Link Authority to be EGPF.

CHANGE (13/23): PTH VOR RECALIBRATED. PTH VOR RADIALS.