

OGDEN, UTAH

HI-ILS or LOC Y RWY 14

LOC I-HIF 109.9	APCH CRS 139°	Rwy ldg 13,500	TDZE 4786
		Arprt Elev 4789	

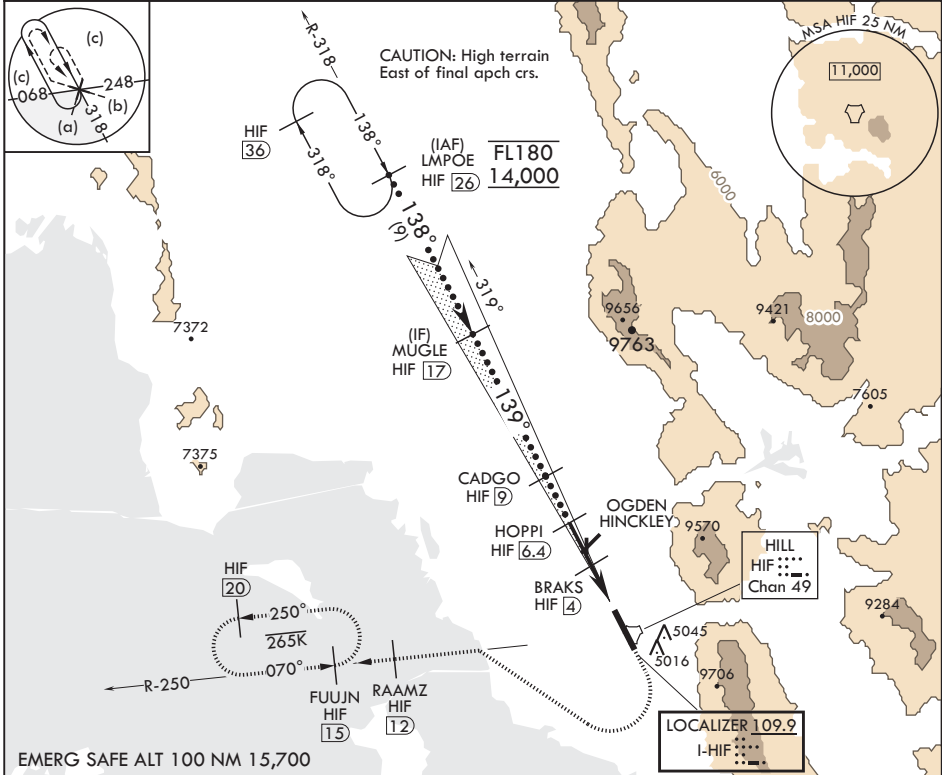
JAL-296 (USAF)

HILL AFB (KHIF)

V * When ALS inop, increase RVR to 40, and vis to 3/4 mile.
 ** When ALS inop, increase RVR to 55, and vis to 1 mile.
 *** Circling not authorized NE of Rwy 14-32.

ALSF-2 MISSED APPROACH: Climb to 5300, then turn right heading 290°, remain within HIF TACAN 5.7 DME until established on 290° hdg. Intercept the HIF R-250 outbd. Cross RAAMZ at 6500, then climb and maintain 7200 direct to FUJUN and hold.

ATIS 134.925 397.9	SALT LAKE CITY APP CON 121.1 319.25	TOWER 127.15 263.15	GND CON 121.6 275.8	CLNC DEL 124.1 335.8
------------------------------	---	-------------------------------	-------------------------------	--------------------------------



SW-4, 20 MAR 2025 to 17 APR 2025

SW-4, 20 MAR 2025 to 17 APR 2025

LMPOE R-318 HIF 26	MUGLE Intcp Lczt HIF 17	5300	6500	RAAMZ HIF 12 6500	ELEV 4789	TDZE 4786
FL180 14,000	9000 8000	7000	6300	5700		
GS 2.80° TCH 57						
		← 2.4 NM	← 2 NM	0.5		
CATEGORY	C	D	E	Approach lights Rwy 14 2400' REIL all Rwys HIRL all Rwys		
S-ILS 14*	4986/24	200	(200-½)	FAF to MAP 4.4 NM		
S-LOC 14**	5080/24	294	(300-½)	Knots	1:20	1:40
CIRCLING***	5280-1½ 491 (500-1½)	5340-2 551 (600-2)	5900-3 1111 (1200-3)	1:60	1:80	2:00
				Min:Sec	2:12	1:53
					1:39	1:28
					1:28	1:19

OGDEN, UTAH

41°07'N - 111°58'W

HILL AFB (KHIF)

Amdt 9 05OCT23

HI-ILS or LOC Y RWY 14