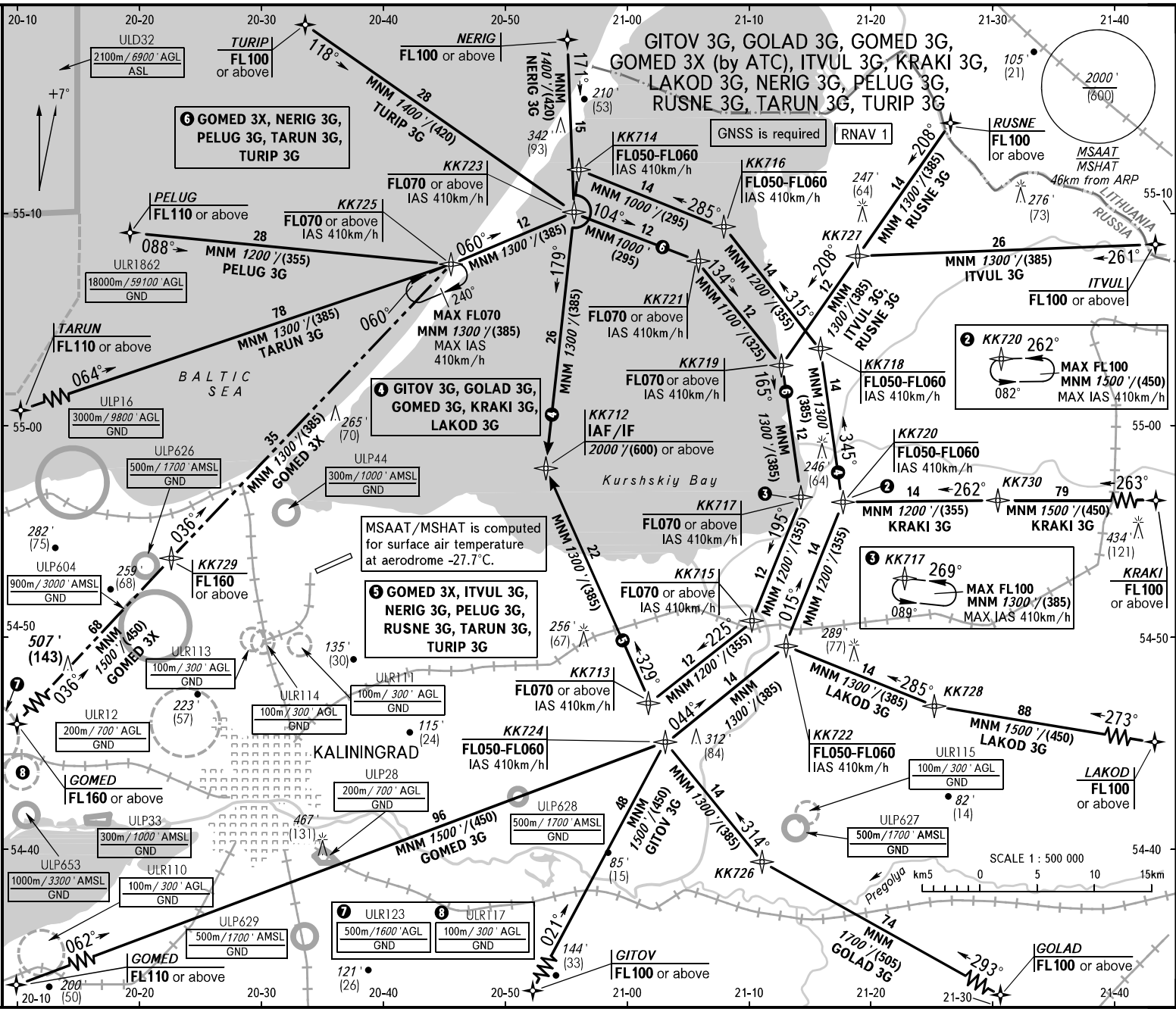


STANDARD ARRIVAL CHART  
INSTRUMENT (STAR) - ICAO

TRANSITION  
LEVEL: **1**

KALININGRAD, RUSSIA  
KHRABROVO  
RNAV RMY 24



**APPROACH 126,000** **TRANSITION LEVEL: 1**

**TOWER 127,200**

**BEARINGS AND TRACKS ARE MAGNETIC**  
**ALTITUDES AND ELEVATIONS IN FEET**  
**HEIGHTS IN METRES**  
**DISTANCES IN KILOMETRES**

**ALL set: -QN(H)/QFE on req.; -hP@ (mm on req.)**

**FL050 when QNH is 1013 hPa (760mm mercury column) or above;**  
**FL060 when QNH is 977 hPa (733mm mercury column) or above,**  
**but less than 1013 hPa (760mm mercury column);**  
**FL100 when QNH is less than 977 hPa (733mm mercury column).**

Federal Air Transport Agency

AIRC AMDT 02/25