

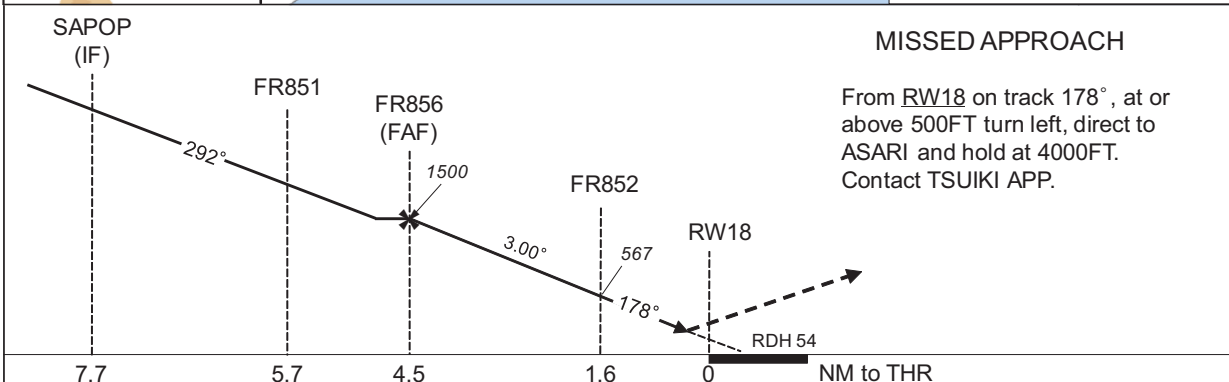
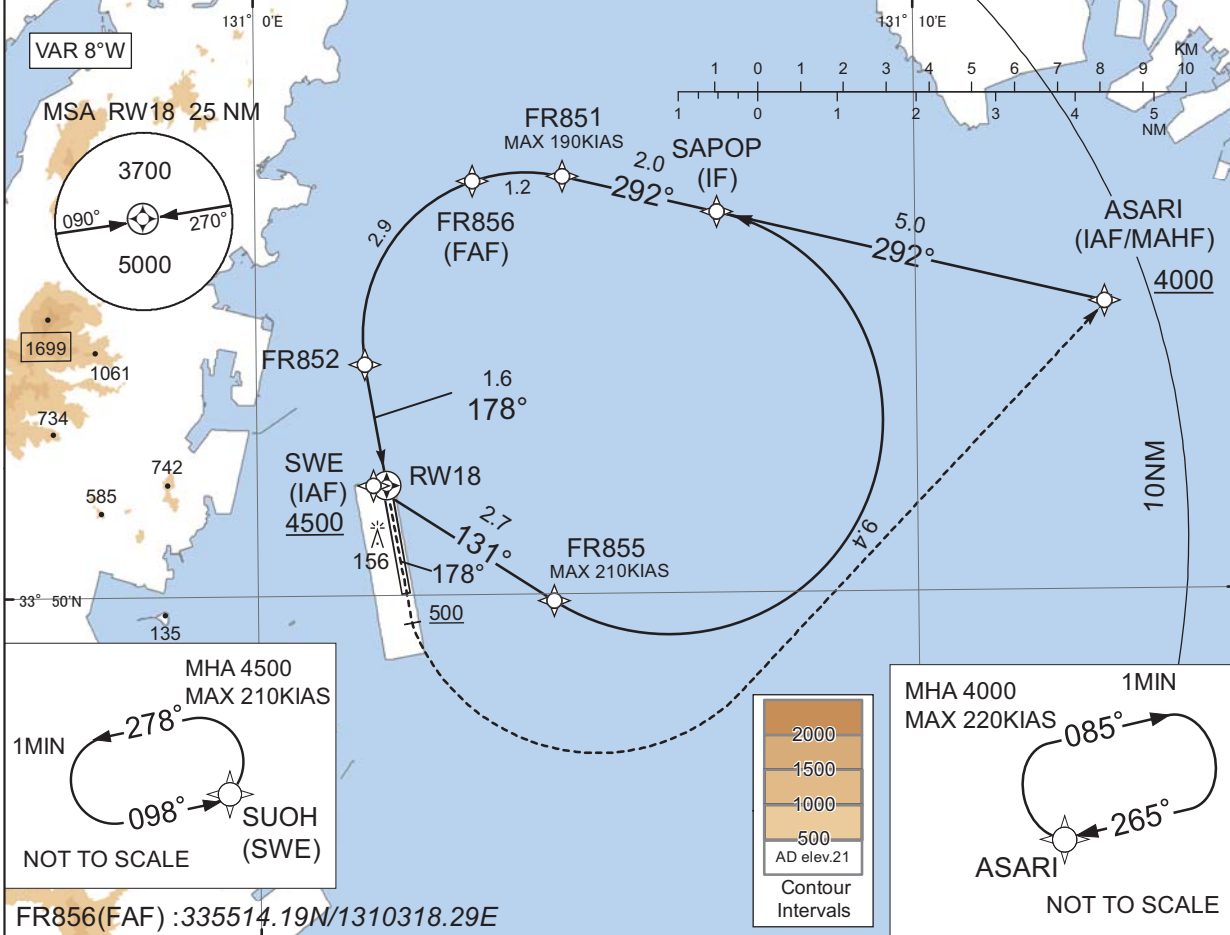
INSTRUMENT APPROACH CHART

RJFR / KITAKYUSHU

RNP RWY18(AR)

TSUIKI APP 119.225 - 315.9	RNP AR RF required.	KITAKYUSHU TOWER 118.85 - 126.2	1315 - 2245(UTC) KITAKYUSHU RADIO 118.85 AFIS provided by Fukuoka Airport Office	RADAR AVBL CALL TSUIKI APP
-------------------------------	------------------------	------------------------------------	--	----------------------------------

For uncompensated Baro-VNAV systems, procedure not authorized below -5°C / above 45°C



Missed APCH climb gradient MNM 5.0%

MINIMA	THR elev. 22	AD elev. 21
CAT	RNP 0.30	
A	DA(H)	RVR/CMV
B	-	-
C	272(250)	800
D	284(262)	1200

**Authorization Required**

MINIMA with Missed APCH climb gradient of 2.5% are not established.

CHANGE : PROC course. SAPOP, FR855, FR856 established. FR850 abolished. NM to THR. MINIMA. Speed at FR851. HLDG pattern for SUOH(SWE), ASARI established. OBST.

INSTRUMENT APPROACH CHART

RJFR / KITAKYUSHU

RNP RWY18(AR)

CHANGE : SAPOP, FR855, FR856 established. FR850 abolished. PROC course. VAR. ALT restriction. Hold at ASARI, SWE, Waypoint Coordinates established.

Coding Table

Serial Number	Path Descriptor	Waypoint Identifier	Fly Over	Course °M(°T)	Magnetic Variation	Distance (NM)	Turn Direction	Altitude (FT)	Speed (KIAS)	VPA/ RDH (°/FT)	RNP Value
001	IF	ASARI	-	-	-8.1	-	-	+4000	-	-	-
002	TF	SAPOP	-	292 (283.6)	-8.1	5.0	-	-	-	-	0.3
001	IF	SWE	-	-	-8.1	-	-	+4500	-	-	-
002	TF	FR855	-	131 (123.1)	-8.1	2.7	-	-	-210	-	0.3
003	RF Center: FRRF4 r=2.70NM	SAPOP	-	-	-8.1	9.4	L	-	-	-	0.3
001	IF	SAPOP	-	-	-8.1	-	-	-	-	-	-
002	TF	FR851	-	292 (283.5)	-8.1	2.0	-	-	-190	-	0.3
003	RF Center: FRRF1 r=2.06NM	FR856	-	-	-8.1	1.2	L	1500	-	-3.00	0.3
004	RF Center: FRRF1 r=2.06NM	FR852	-	-	-8.1	2.9	L	567	-	-3.00	0.3
005	TF	RW18	Y	178 (170.4)	-8.1	1.6	-	76	-	-3.00/54	0.3
006	FA	-	-	178 (170.4)	-8.1	-	-	+500	-	-	1.0
007	DF	ASARI	-	-	-8.1	-	L	4000	-	-	1.0

Path	Waypoint Identifier	Inbound Course °M(°T)	Magnetic Variation	Outbound Time (MIN)	Turn Direction	Minimum Altitude (FT)	Maximum Altitude (FT)	Speed (KIAS)	RNP Value
Hold	ASARI	265 (256.4)	-8.1	1.0 (-14000)	R	4000	FL140	-220 (-14000)	1.0
Hold	SWE	098 (090.0)	-8.1	1.0 (-14000)	L	4500	FL140	-210 (-14000)	1.0

Waypoint Coordinates

Waypoint Identifier	Coordinates	RF Arc Center Identifier	Coordinates
ASARI	335338.98N / 1311252.32E	FRRF4	335211.48N / 1310615.14E
SUOH(SWE)	335123.82N / 1310145.84E	FRRF1	335316.61N / 1310405.62E
FR855	334955.38N / 1310429.24E		
SAPOP	335449.30N / 1310700.39E		
FR851	335517.24N / 1310440.15E		
FR856	335514.19N / 1310318.29E		
FR852	335255.76N / 1310139.03E		
RW18	335123.92N / 1310157.83E		