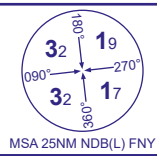


INSTRUMENT APPROACH CHART - ICAO

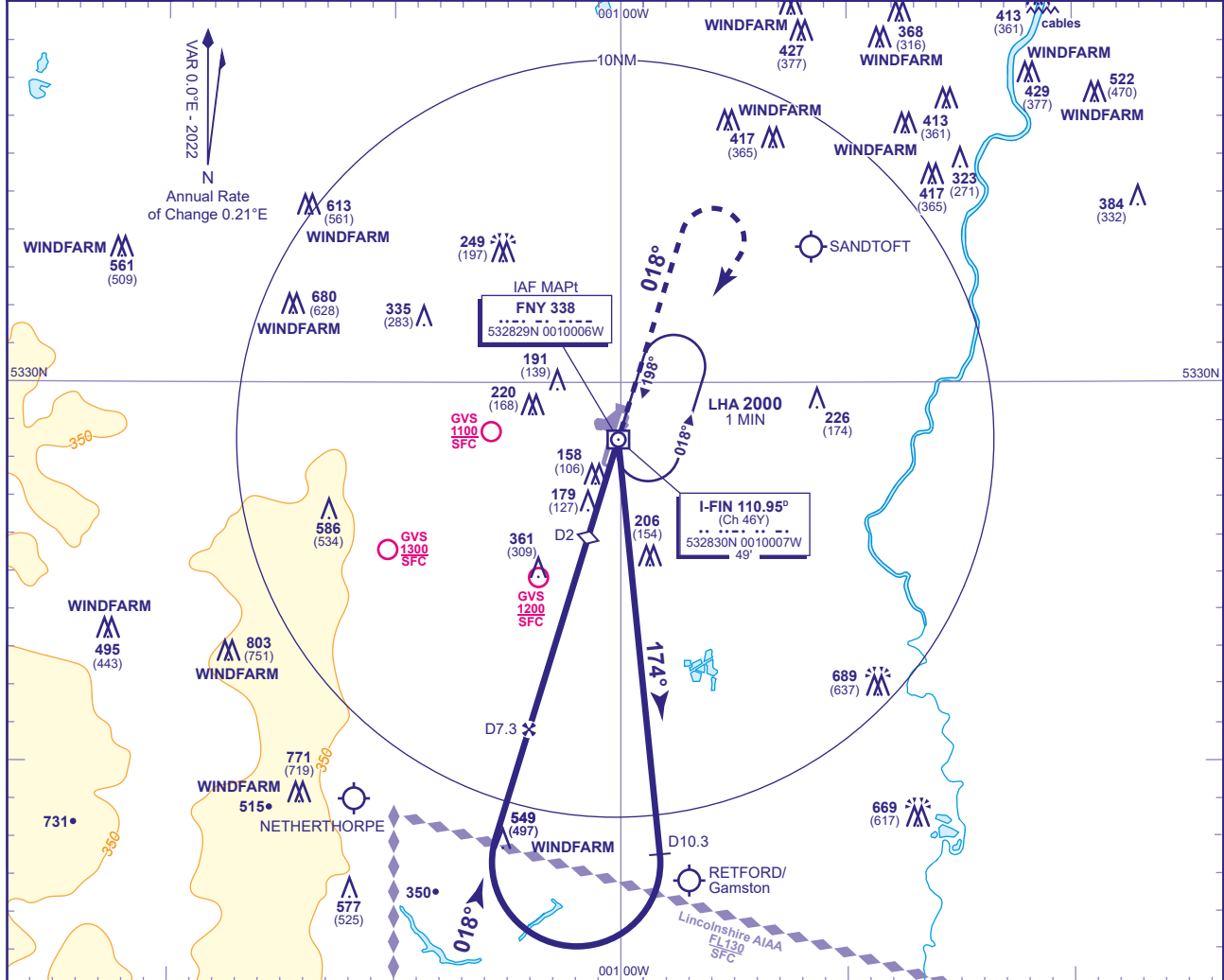
DONCASTER SHEFFIELD

**NDB(L)/DME Y
RWY 02**
(ACFT CAT C,D)



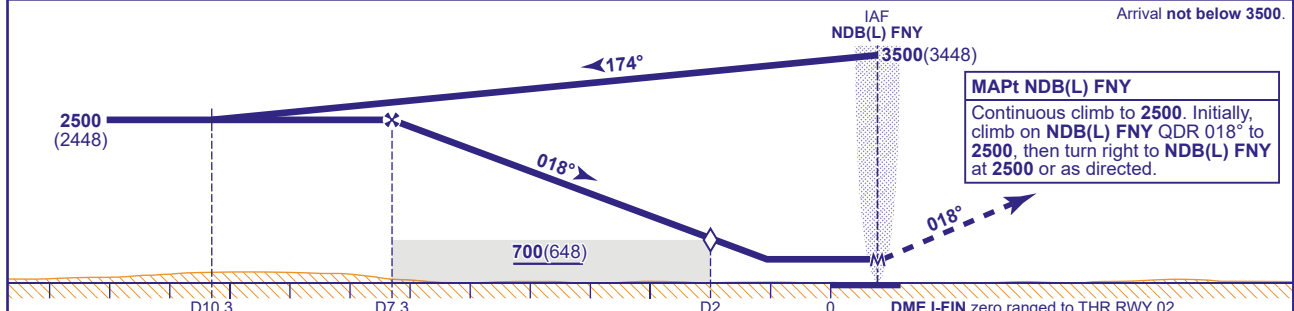
APP	126.225	DONCASTER APPROACH	AD ELEVATION	55
TWR	128.775	DONCASTER TOWER	THR ELEVATION	52
RAD	126.225, 129.055	DONCASTER RADAR	OBSTACLE ELEVATION	803 AMSL (751) (ABOVE THR)
ATIS	134.955	DONCASTER INFORMATION	BEARINGS ARE MAGNETIC	

TRANSITION ALTITUDE
5000



RECOMMENDED PROFILE Gradient 5.4%, 325FT/NM

DME I-FIN	7	6	5	4	3	2 (SDF)	1
ALT(HGT)	2400(2348)	2070(2018)	1750(1698)	1420(1368)	1090(1038)	760(708)	430(378)



MAPt NDB(L) FNY
Continuous climb to 2500. Initially, climb on NDB(L) FNY QDR 018° to 2500, then turn right to NDB(L) FNY at 2500 or as directed.

Aircraft Category	C	D	Rate of descent	G/S KT	160	140	120	100	80
	WITH DME	430(378)		430(378)	FT/MIN	870	770	660	550
OCA (OCH)	NO DME	760(705)	760(705)						
VM(C)OCA (OCH AAL)	Total Area	760(705)	760(705)						

AIRCRAFT UNABLE TO RECEIVE DME I-FIN
Notify ATC. Fly outbound for 2.5 MIN on track 174° then turn right to establish on the FAT. Once established, descend to MDA(H).

NOTE 1 Aircraft will normally be required to hold not lower than 3500. Lowest altitude to commence procedure from hold after missed approach is 2500.
NOTE 2 CAUTION: Pilots of inbound traffic to note proximity of Retford/Gamston, Netherthorpe and Sandtoft aerodromes to instrument approach procedures.