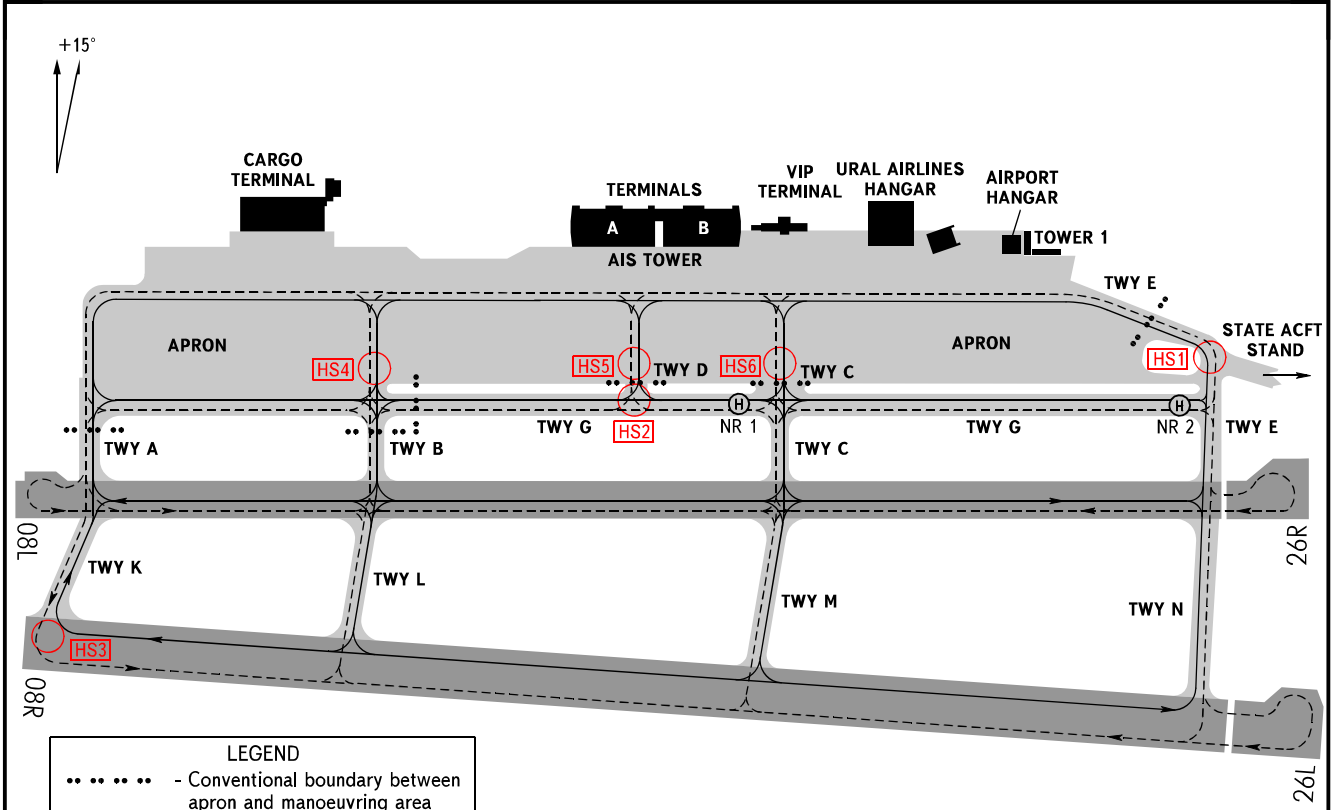


AERODROME GROUND
MOVEMENT CHART - ICAO

KOLTSOVO START 124.300
KOLTSOVO GROUND 119.000

YEKATERINBURG, RUSSIA

KOLTSOVO



LEGEND
 - Conventional boundary between apron and manoeuvring area

- HS1** - Attention! Taxiing of state aviation ACFT out of the stands, HEL taxiing, intensive ground vehicle traffic.
- HS2** - Attention! When taxiing via TWY D, further taxiing shall be carried out to the left or to the right.
- HS3** - Attention! When taxiing from TWY K onto RWY 08R, the turn is more than 090°.
- HS4-HS6** - Attention! Intensive ground vehicle traffic.

Not to scale

	A	B	C	C	D	E	E	G	K	L	M	N
Taxiways			between RWY 08L/26R and TWY G	between APRON and TWY G		between RWY 08L/26R and TWY G	between APRON and TWY G					
Surface	Reinforced Concrete	Reinforced Concrete	Reinforced Concrete	Reinforced Concrete	Reinforced Concrete	Reinforced Concrete	Asphalt-Concrete	Reinforced Concrete	Cement-Concrete	Cement-Concrete	Cement-Concrete	Cement-Concrete
Width, m	22.5	22.5	22.5	64.0	22.5	22.5	22.5	22.5	22.5	22.5	22.5	22.5
Strength	PCN 64 R/B/W/T	PCN 85 R/B/W/T	PCN 85 R/B/W/T	PCN 85 R/B/W/T	PCN 59 R/B/W/T	PCN 85 R/B/W/T	PCN 83 F/D/W/T	PCN 73 R/B/W/T	PCN 52 R/B/W/T	PCN 46 R/B/W/T	PCN 39 R/B/W/T	PCN 52 R/B/W/T

APRON						
	Route T10 between TWY A and stand 25	Route T10 between stand 24 and stand 22	Route T10 between stand 21 and stand 62	Route T10 between stand 63 and TWY E	Route T8 between TWY A and TWY B	Route T7
Surface	Reinforced Concrete	Asphalt-Concrete	Reinforced Concrete	Asphalt-Concrete	Reinforced Concrete	Asphalt-Concrete
Strength	PCN 64 R/B/W/T	PCN 70 F/D/W/T	PCN 64 R/B/W/T	PCN 83 F/D/W/T	PCN 73 R/B/W/T	PCN 26 F/D/Y/T

CHANGE: VIP TERMINAL