

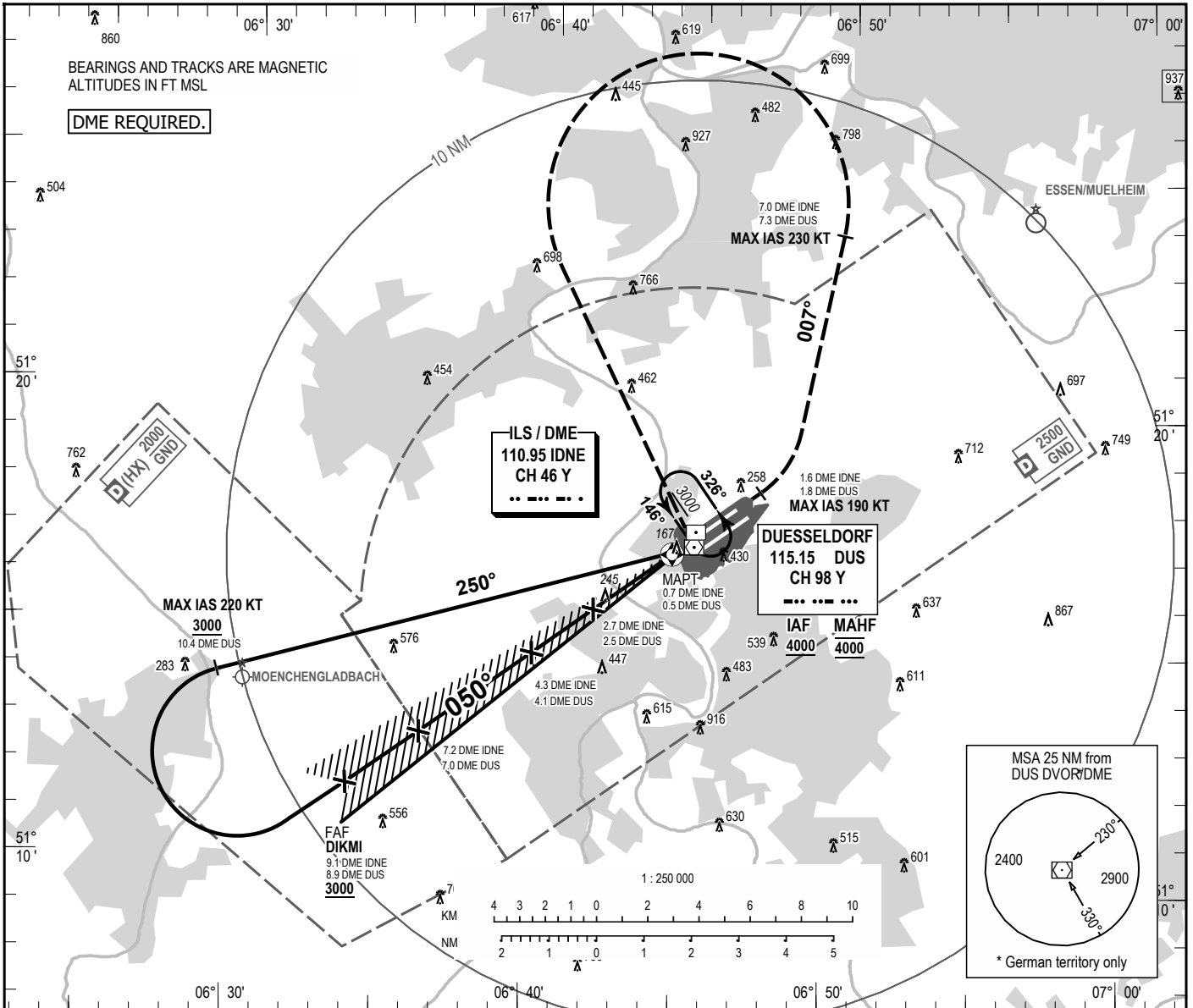
INSTRUMENT
APPROACH
CHART - ICAO

VAR 3° E

ELEV 138
OCH RELATED TO
THR 05L ELEV 116

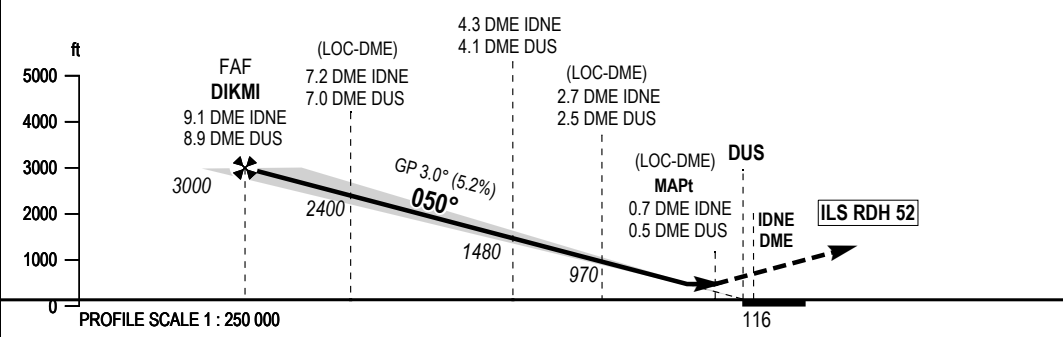
DUESSELDORF ATIS	123.780	DUESSELDORF TOWER	118.305
LANGEN RADAR	128.555	DUESSELDORF GROUND	121.905
DUESSELDORF ARRIVAL	128.655	DUESSELDORF DELIVERY	121.780

DUESSELDORF
ILS or LOC
RWY 05L



MISSED APPROACH PROCEDURE

Climb on heading 050° until crossing 1.6 DME IDNE (1.8 DME DUS). LT on heading 007° until crossing 7.0 DME IDNE (7.3 DME DUS). LT direct DUS climbing 4000. MAX IAS 190 kts during first turn. Thereafter MAX IAS 230 kts.



OCA (OCH)	A	B	C	D	DL
ILS/DME CAT I	358 (242)	370 (254)	379 (263)	389 (273)	389 (273)
LOC	480 (370)	480 (370)	480 (370)	480 (370)	

DIST DME IDNE	8	7	6	5	4	3	2
DIST THR	7.8	6.8	5.8	4.8	3.8	2.8	1.8
ALTITUDE	2660	2340	2020	1700	1390	1070	750

LOC-DME: Timing not authorized for defining the MAPt.

GS	kt	80	100	120	140	160	180
DIKMI - THR (8.9 NM)	MIN:SEC	6:56	5:33	4:38	3:58	3:28	3:05
Rate of descent (5.2%)	ft/MIN	420	530	640	740	850	950

Correction: MSA box.