

STANDARD DEPARTURE CHART - INSTRUMENT

RJOK / KOCHI

SID

KOCHI REVERSAL SIX DEPARTURE

RWY 14 : Climb RWY HDG to 500FT, turn right...

RWY 32 : Climb RWY HDG to 800FT, trun right HDG 205° ...

...to intercept and proceed via KRE R160 to KRE 10.0DME, turn left  
proceed to KRE VOR/DME.

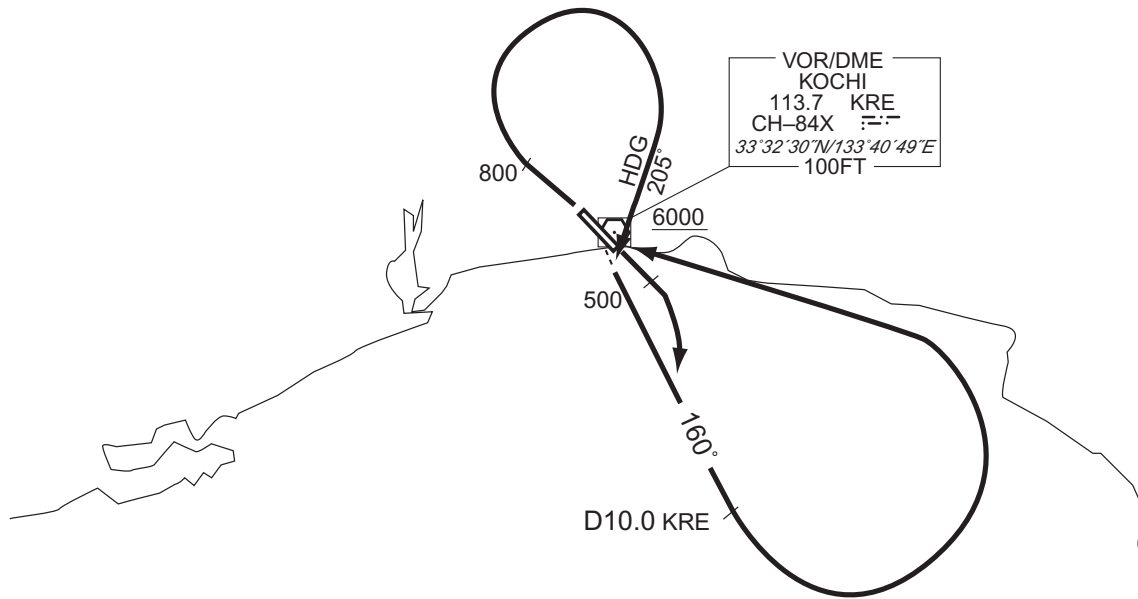
Cross KRE VOR/DME at or above 6000FT.

Note RWY14 : 5.0% climb gradient required up to 500FT.

OBST ALT 61FT located at 0.2NM 179° FM end of RWY14.

RWY32 : 6.0% climb gradient required up to 2500FT.

OBST ALT 2165FT located at 6.6NM 359° FM end of RWY32.



CHANGE : PROC renamed. Note RWY14 added.