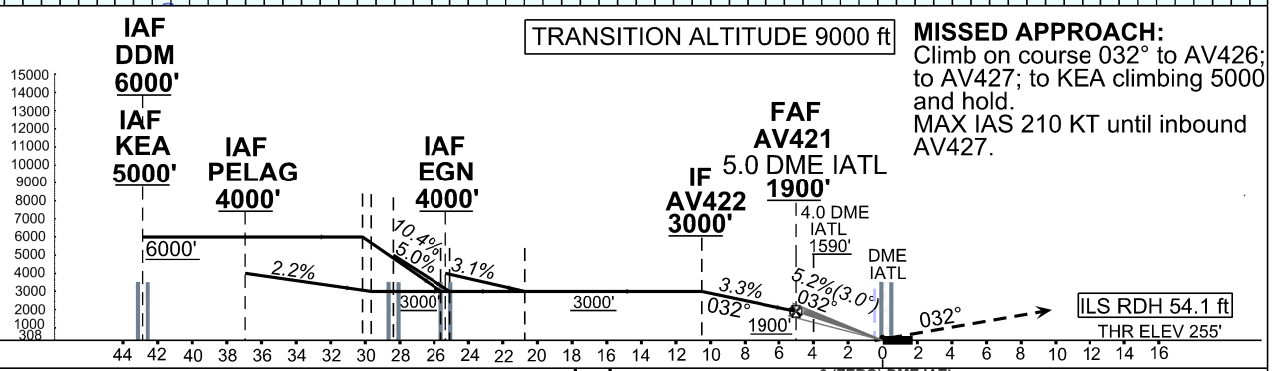
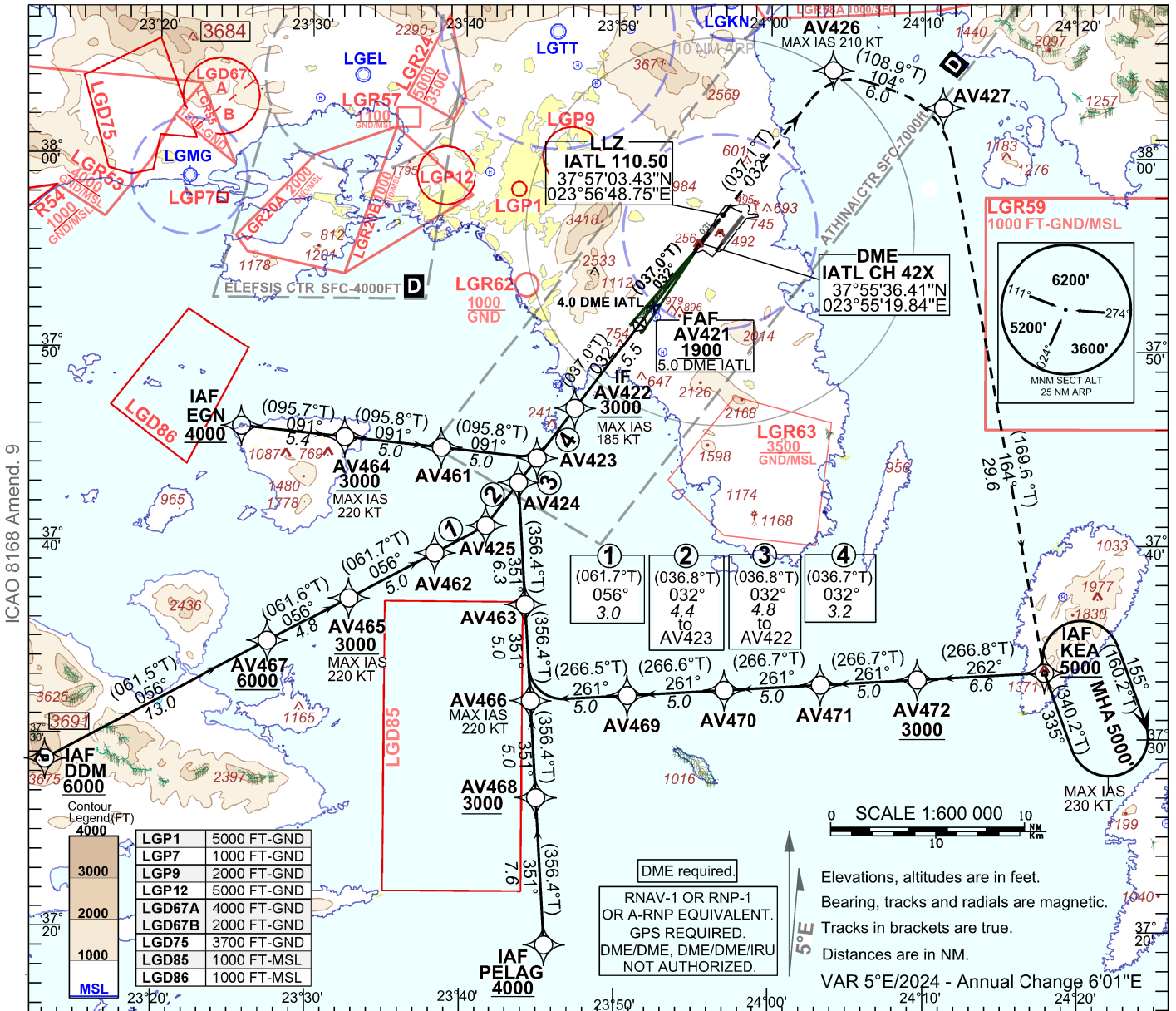


ATIS 136.125	ARRIVAL WEST 132.975	TOWER WEST 136.275
	ARRIVAL EAST 126.575	TOWER EAST 118.625



OCA(OCH)	A	B	C	D	D _L
ILS CAT I (ALT/HEIGHT W.R.T. THR RWY 03L ELEVATION)	485 (230)	498 (243)	506 (251)	516 (261)	
ILS CAT II (ALT/HEIGHT W.R.T. THR RWY 03L ELEVATION)	355 (100)			441 (186)	
CIRCLING (ALT/HEIGHT W.R.T. A/D ELEVATION)	1010 (702)	1160 (852)	N / A		

Distance I-ATL DME	4.0	3.0	2.0	
Altitude 5.2% Approach	1590	1270	950	
GS (kt)	100	135	160	185
AV421 - THR (5.0 NM) (MIN:SEC)	3:00	2:14	1:53	1:37
Rate of descent (5.2%) (ft/min)	530	720	850	980

Change: INITIAL APCH FROM DDM Nav. Spec., FINAL APCH AV422 speed limit

ILS X CAT I & II RWY 03L

INITIAL APCH FROM DDM												
Sequence Number	Waypoint Identifier	Coordinates	Path Terminator	Fly Over	Distance (NM)	Course °M (°T)	Turn Direction	Altitude (FT/FL)	Speed Limit (kt)	Navigation Specification	RNP	REMARKS
010	DDM	N 37°28'39.6100" E 023°13'01.8100"	IF	-	-	-	-	+6000	-	RNP APCH	1.0	IAF
020	AV467	N 37°34'51.7078" E 023°27'23.9154"	TF	-	13.0	056 (061.5)	-	+6000	-	RNP APCH	1.0	
030	AV465	N 37°37'07.3379" E 023°32'39.7651"	TF	-	4.8	056 (061.6)	-	+3000	-220	RNP APCH	1.0	
040	AV462	N 37°39'29.7362" E 023°38'12.3131"	TF	-	5.0	056 (061.7)	-	-	-	RNP APCH	1.0	
050	AV425	N 37°40'55.5611" E 023°41'33.2096"	TF	-	3.0	056 (061.7)	-	-	-	RNP APCH	1.0	
060	AV423	N 37°44'25.3272" E 023°44'50.8947"	TF	-	4.4	032 (036.8)	-	-	-	RNP APCH	1.0	
070	AV422	N 37°47'00.2952" E 023°47'16.6211"	TF	-	3.2	032 (036.7)	-	+3000	-185	RNP APCH	1.0	IF
INITIAL APCH FROM EGN												
Sequence Number	Waypoint Identifier	Coordinates	Path Terminator	Fly Over	Distance (NM)	Course °M (°T)	Turn Direction	Altitude (FT/FL)	Speed Limit (kt)	Navigation Specification	RNP	REMARKS
010	EGN	N 37°45'58.3000" E 023°25'34.8700"	IF	-	-	-	-	+4000	-	RNP APCH	1.0	IAF
020	AV464	N 37°45'26.2208" E 023°32'18.2831"	TF	-	5.4	091 (095.7)	-	+3000	-220	RNP APCH	1.0	
030	AV461	N 37°44'55.9409" E 023°38'34.6317"	TF	-	5.0	091 (095.8)	-	-	-	RNP APCH	1.0	
040	AV423	N 37°44'25.3272" E 023°44'50.8947"	TF	-	5.0	091 (095.8)	-	-	-	RNP APCH	1.0	
050	AV422	N 37°47'00.2952" E 023°47'16.6211"	TF	-	3.2	032 (036.7)	-	+3000	-185	RNP APCH	1.0	IF
INITIAL APCH FROM KEA												
Sequence Number	Waypoint Identifier	Coordinates	Path Terminator	Fly Over	Distance (NM)	Course °M (°T)	Turn Direction	Altitude (FT/FL)	Speed Limit (kt)	Navigation Specification	RNP	REMARKS
010	KEA	N 37°33'25.7900" E 024°17'55.3200"	IF	-	-	-	-	+5000	-	RNP APCH	1.0	IAF
020	AV472	N 37°33'03.4845" E 024°09'38.2506"	TF	-	6.6	262 (266.8)	-	+3000	-	RNP APCH	1.0	
030	AV471	N 37°32'46.1948" E 024°03'21.6360"	TF	-	5.0	261 (266.7)	-	-	-	RNP APCH	1.0	
040	AV470	N 37°32'28.5714" E 023°57'05.0703"	TF	-	5.0	261 (266.7)	-	-	-	RNP APCH	1.0	
050	AV469	N 37°32'10.6145" E 023°50'48.5543"	TF	-	5.0	261 (266.6)	-	-	-	RNP APCH	1.0	
060	AV466	N 37°31'52.3241" E 023°44'32.0889"	TF	-	5.0	261 (266.5)	-	-	-220	RNP APCH	1.0	
070	AV463	N 37°36'52.1012" E 023°44'08.6775"	TF	-	5.0	351 (356.4)	-	-	-	RNP APCH	1.0	
080	AV424	N 37°43'09.2459" E 023°43'39.1491"	TF	-	6.3	351 (356.4)	-	-	-	RNP APCH	1.0	
090	AV422	N 37°47'00.2952" E 023°47'16.6211"	TF	-	4.8	032 (036.8)	-	+3000	-185	RNP APCH	1.0	IF

INITIAL APCH FROM PELAG												
Sequence Number	Waypoint Identifier	Coordinates	Path Terminator	Fly Over	Distance (NM)	Course °M (°T)	Turn Direction	Altitude (FT/FL)	Speed Limit (kt)	Navigation Specification	RNP	REMARKS
010	PELAG	N 37°19'15.0000" E 023°45'31.0000"	IF	-	-	-	-	+4000	-	RNP APCH	1.0	IAF
020	AV468	N 37°26'52.5415" E 023°44'55.4483"	TF	-	7.6	351 (356.5)	-	+3000	-	RNP APCH	1.0	
030	AV466	N 37°31'52.3241" E 023°44'32.0889"	TF	-	5.0	351 (356.4)	-	-	-220	RNP APCH	1.0	
040	AV463	N 37°36'52.1012" E 023°44'08.6775"	TF	-	5.0	351 (356.4)	-	-	-	RNP APCH	1.0	
050	AV424	N 37°43'09.2459" E 023°43'39.1491"	TF	-	6.3	351 (356.4)	-	-	-	RNP APCH	1.0	
060	AV422	N 37°47'00.2952" E 023°47'16.6211"	TF	-	4.8	032 (036.8)	-	+3000	-185	RNP APCH	1.0	IF
FINAL APCH												
Sequence Number	Waypoint Identifier	Coordinates	Path Terminator	Fly Over	Distance (NM)	Course °M (°T)	Turn Direction	Altitude (FT/FL)	Speed Limit (kt)	Navigation Specification	RNP	REMARKS
010	AV422	N 37°47'00.2952" E 023°47'16.6211"	IF	-	-	-	-	+3000	-185	RNP APCH	1.0	IF
020	AV421	N 37°51'24.7247" E 023°51'27.3368"	CF	-	5.5	032 (037.0)	-	+1900	-	-	-	FAF
030	RW03L	N 37°55'25.2241" E 023°55'15.3600"	CF	Y	5.0	032 (037.0)	-	-	-	-	-	
MISSED APCH												
Sequence Number	Waypoint Identifier	Coordinates	Path Terminator	Fly Over	Distance (NM)	Course °M (°T)	Turn Direction	Altitude (FT/FL)	Speed Limit (kt)	Navigation Specification	RNP	REMARKS
010	AV426	N 38°04'33.9908" E 024°04'01.9502"	CF	-	11.5	032 (037.2)	-	-	-210	RNP APCH	1.0	
020	AV427	N 38°02'36.9506" E 024°11'13.1795"	TF	-	6.0	104 (108.9)	-	-	-	RNP APCH	1.0	
030	KEA	N 37°33'25.7900" E 024°17'55.3200"	TF	-	29.6	164 (169.6)	-	@5000	-	RNP APCH	1.0	
RNAV HOLDING IDENTIFICATION												
Sequence Number	Waypoint Identifier	Coordinates	Path Terminator	Fly Over	Distance (NM)	Course °M (°T)	Turn Direction	Altitude (FT/FL)	Speed Limit (kt)	Navigation Specification	RNP	REMARKS
010	KEA	N 37°33'25.7900" E 024°17'55.3200"	HM	Y	-	335 (340.2)	R	+5000	-230	RNAV 1	1.0	