

STANDARD ARRIVAL
CHART - INSTRUMENT
RNAV (GPS)

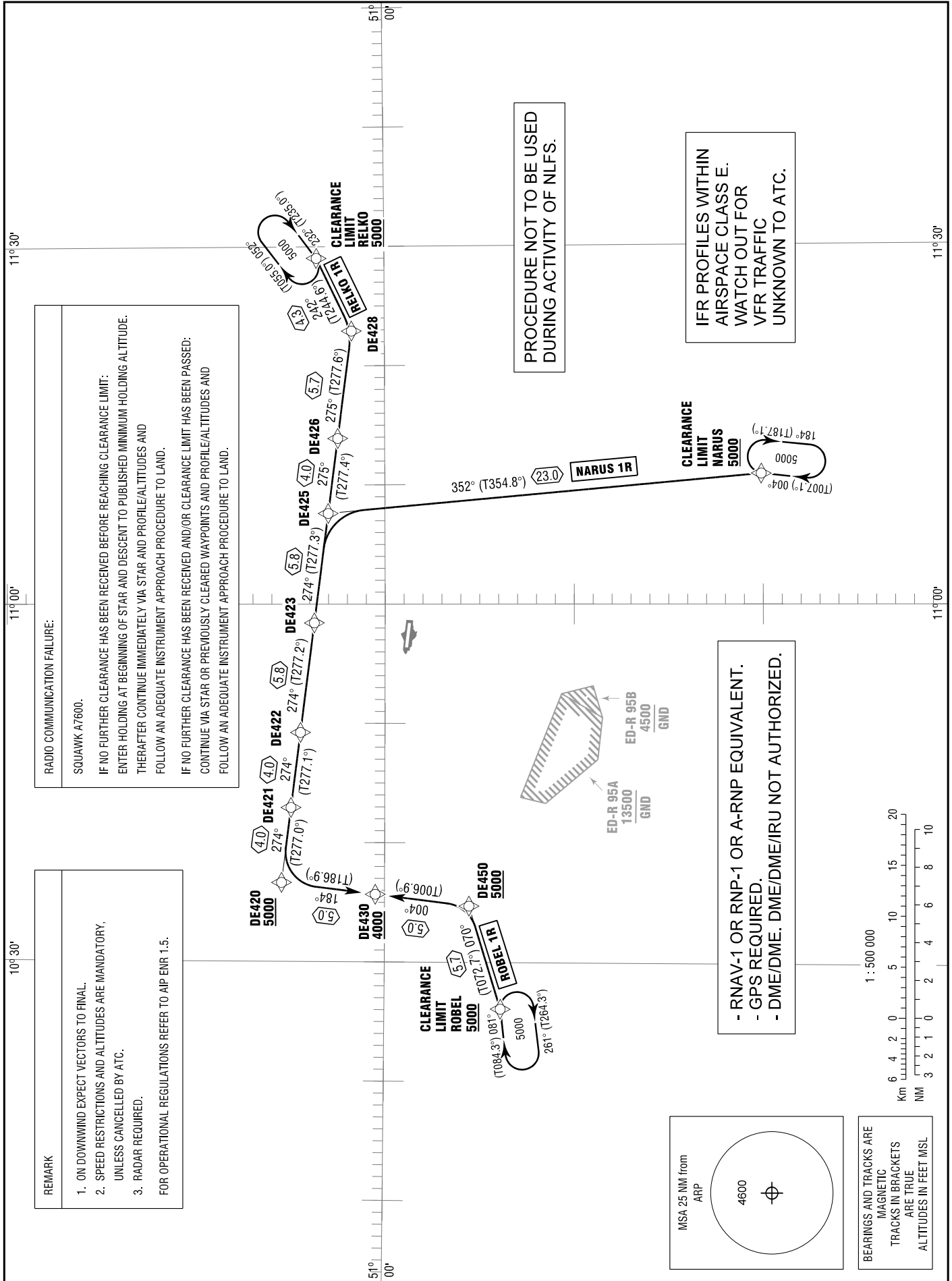
TRANSITION	ERFURT ATIS	133.455	ERFURT GROUND	121.755
ALTITUDE 5000	MUENCHEN RADAR	126.175	ERFURT APRON	121.905
VAR 3° E	ERFURT TOWER	121.155		

ERFURT-WEIMAR
RWY 09

Correction: Note modified.

RADIO COMMUNICATION FAILURE:
SQUAWK A7600.
IF NO FURTHER CLEARANCE HAS BEEN RECEIVED BEFORE REACHING CLEARANCE LIMIT:
ENTER HOLDING AT BEGINNING OF STAR AND DESCENT TO PUBLISHED MINIMUM HOLDING ALTITUDE.
THEREAFTER CONTINUE IMMEDIATELY VIA STAR AND PROFILE/ALTITUDES AND
FOLLOW AN ADEQUATE INSTRUMENT APPROACH PROCEDURE TO LAND.
IF NO FURTHER CLEARANCE HAS BEEN RECEIVED AND/OR CLEARANCE LIMIT HAS BEEN PASSED:
CONTINUE VIA STAR OR PREVIOUSLY CLEARED WAYPOINTS AND PROFILE/ALTITUDES AND
FOLLOW AN ADEQUATE INSTRUMENT APPROACH PROCEDURE TO LAND.

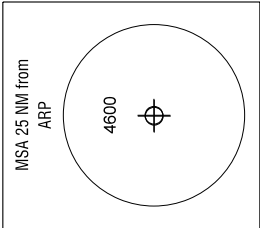
REMARK
1. ON DOWNWIND EXPECT VECTORS TO FINAL.
2. SPEED RESTRICTIONS AND ALTITUDES ARE MANDATORY, UNLESS CANCELLED BY ATC.
3. RADAR REQUIRED.
FOR OPERATIONAL REGULATIONS REFER TO AIP ENR 1.5.



PROCEDURE NOT TO BE USED
DURING ACTIVITY OF NLFS.

IFR PROFILES WITHIN
AIRSPACE CLASS E.
WATCH OUT FOR
VFR TRAFFIC
UNKNOWN TO ATC.

- RNAV-1 OR RNP-1 OR A-RNP EQUIVALENT.
- GPS REQUIRED.
- DME/DME, DME/DME/IRU NOT AUTHORIZED.



BEARINGS AND TRACKS ARE
MAGNETIC
TRACKS IN BRACKETS
ARE TRUE
ALTITUDES IN FEET MSL