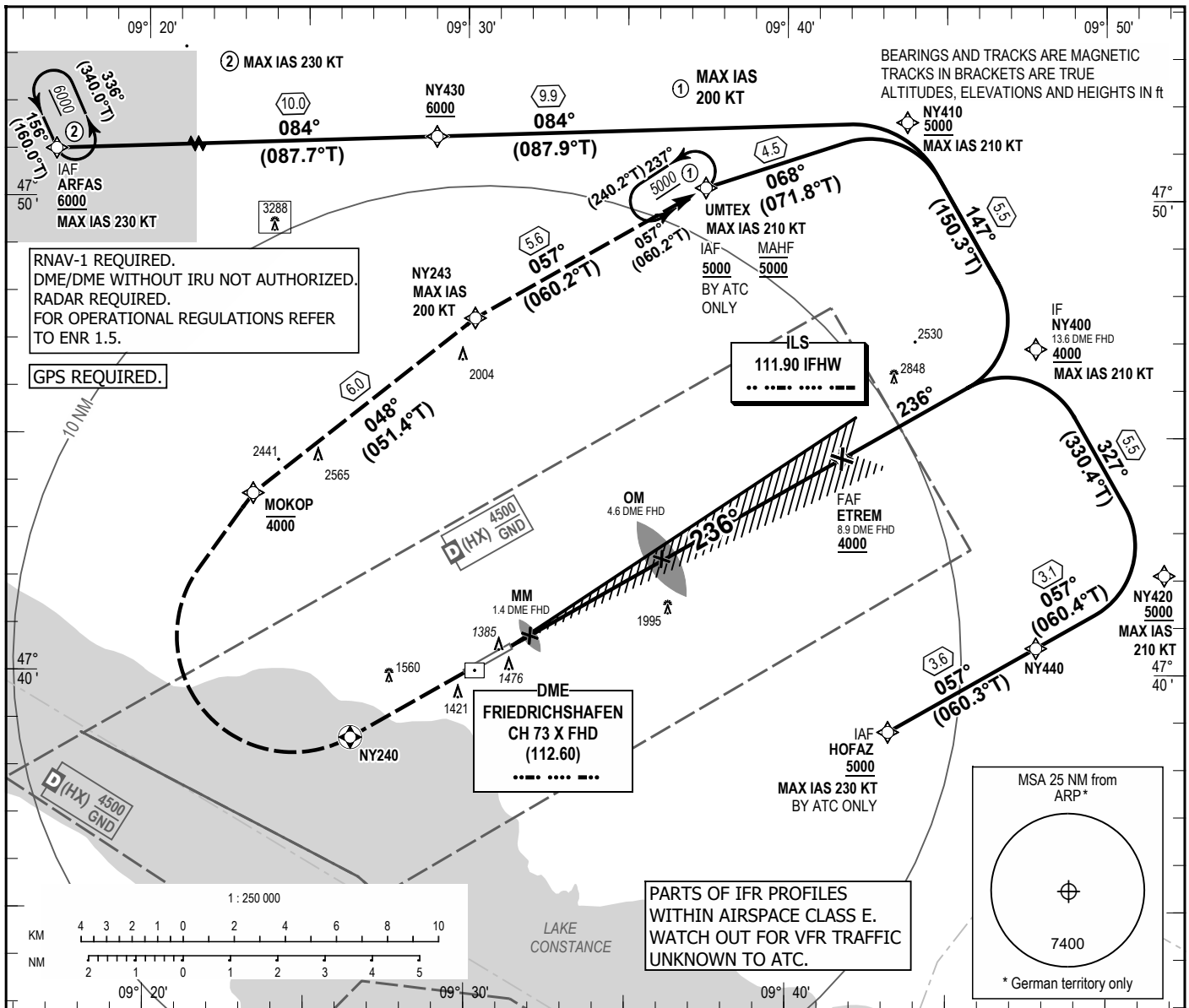


INSTRUMENT APPROACH
CHART - ICAO

VAR 4° E
ELEV 1367
OCH RELATED TO
THR 24 ELEV 1367

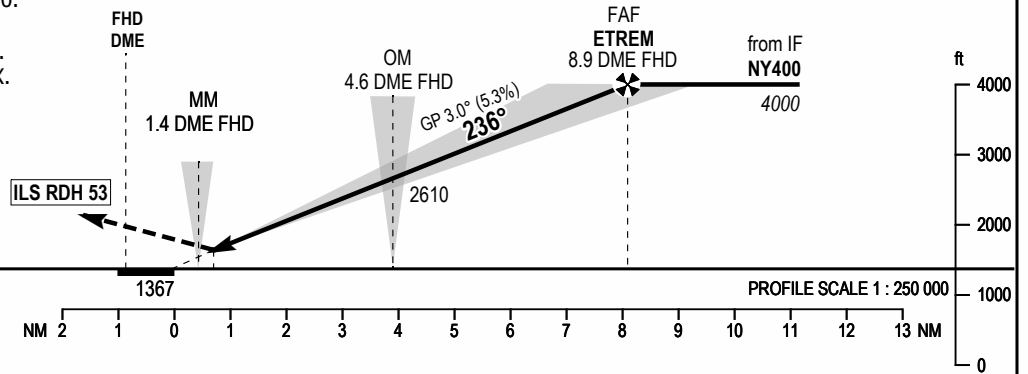
FRIEDRICHSHAFEN ATIS 129.605
ALPS RADAR 119.925
FRIEDRICHSHAFEN TOWER 120.080

FRIEDRICHSHAFEN
ILS CAT II & III
RWY 24



MISSED APPROACH PROCEDURE

On course 237° to NY240; RT, direct to MOKOP; to NY243; to UMTEX, climb 5000. Climb with 3.5% (215ft/NM) until 2700. Cross MOKOP at or below 4000. MAX IAS 200 KT until crossing NY243. MAX IAS 210 KT until crossing UMTEX.



OCA (OCH)	A	B	C	D	DL
ILS/DME CAT I	1612 (245)	1622 (255)	1631 (264)	1641 (274)	
ILS/DME CAT II	1427 (60)	1444 (77)	1456 (89)	1470 (103)	

DIST DME FHD	2	3	4	5	6	7	8
DIST THR	1.1	2.1	3.1	4.1	5.1	6.1	7.1
ALTITUDE	1780	2100	2420	2740	3060	3380	3690

GS	kt	80	100	120	140	160	180
ETREM - RW24 (8.1 NM)	MIN:SEC	6:03	4:51	4:02	3:28	3:02	2:42
Rate of descent (5.3%)	ft/MIN	420	530	640	740	850	960

Correction: Editorial.