

LOC I-UIIN 110.1	APP CRS 038°	Rwy Idg 7098
		TDZE 763
		Apt Elev 768

ILS or LOC RWY 4

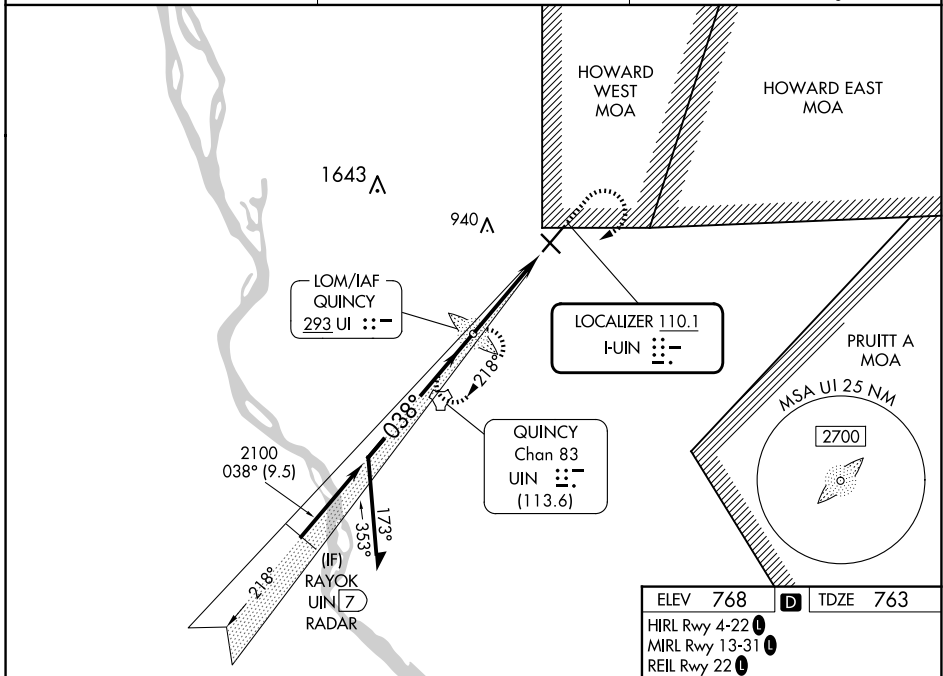
QUINCY RGNL-BALDWIN FLD (UIIN)

ADF required.
RADAR required for procedure entry at RAYOK.

NA DME from UIIN TACAN. DME use requires simultaneous reception of I-UIIN and UIIN TACAN. When local altimeter setting not received, use Pittsfield altimeter setting and increase S-ILS 04 DA to 1033 feet; increase all MDAs 80 feet and S-LOC 04 visibility Cat C/D 3/8 SM. For inop ALS when local altimeter not received, increase S-ILS 4 all Cats visibility to 7/8 SM and S-LOC 4 Cat C and D visibility to 1 3/8 SM.

MALSRL
MISSED APPROACH: Climb to 1800 then climbing right turn to 2300 direct QUINCY LOM and hold.

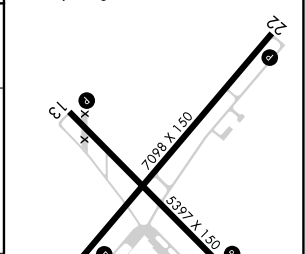
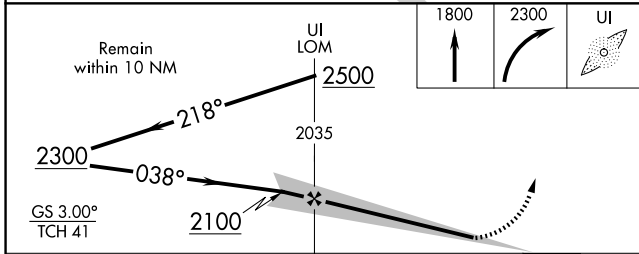
ASOS 121.425	KANSAS CITY CENTER 126.225 317.775	UNICOM 123.0(CTAF) 1
------------------------	----------------------------------------------	--------------------------------



EC-3, 20 MAR 2025 to 17 APR 2025

EC-3, 20 MAR 2025 to 17 APR 2025

ELEV 768	TDZE 763
HIRL Rwy 4-22	MIRL Rwy 13-31
REIL Rwy 22	



CATEGORY	A	B	C	D
S-ILS 4		963-1/2	200 (200-1/2)	
S-LOC 4	1160-1/2	397 (400-1/2)	1160-5/8	397 (400-5/8)
CIRCLING	1180-1 412 (500-1)	1220-1 452 (500-1)	1240-1 1/2 472 (500-1 1/2)	1320-2 552 (600-2)

FAF to MAP 3.9 NM					
Knots	60	90	120	150	180
Min:Sec	3:54	2:36	1:57	1:34	1:18